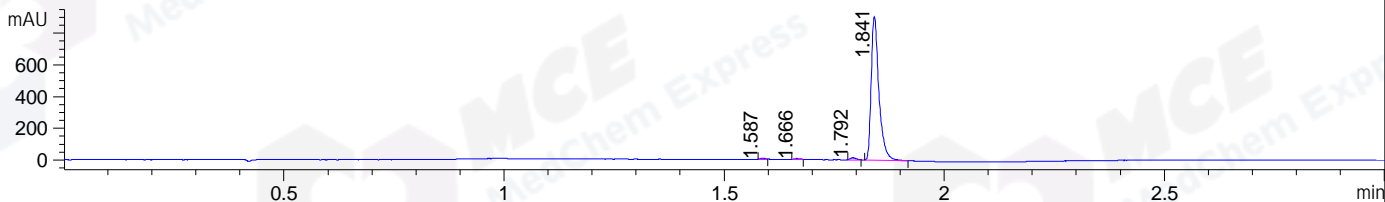
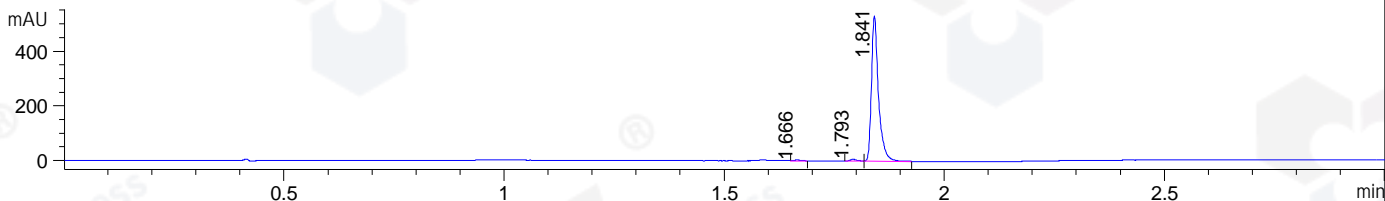


File ..\DATA\2019\20190822\705\CPK2019-822-13657.D Tgt Mass (CHM):
 Injection Date : 22 Aug 19 1:14 pm +0800 Seq. Line : 56
 Sample Name : CPK2019-822-13657 Location : P1-B-07
 Acq. Operator : ZJ_1432 Inj : 1
 Spec. Reported : MS Integration Inj Volume : 1 ul
 Acq. Method : D:\Chem32\1\data\2019\20190822\705\1-POS-3MIN.M
 Analysis Method : D:\CHEM32\1\DATA\2019\20190822\705\1-POS-3MIN.M
 Catalog No : HY-11102 Batch#13657
 Method Info : Mobile Phase: A: water(0.01%TFA) B:ACN(0.01%TFA)
 Gradient: 5% to 95%B within 1.3 min
 Flow Rate :1.8ml/min
 Column :SunFire C18, 4.6*50mm,3.5um A-RP-433
 Oven Temperature : 45□

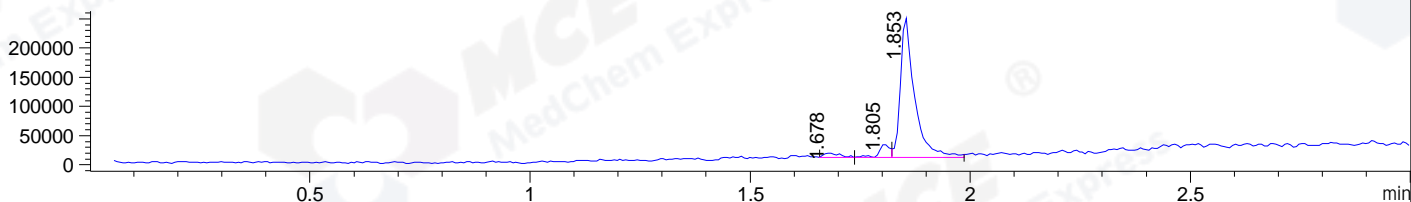
DAD1 B, Sig=214,4 Ref=off



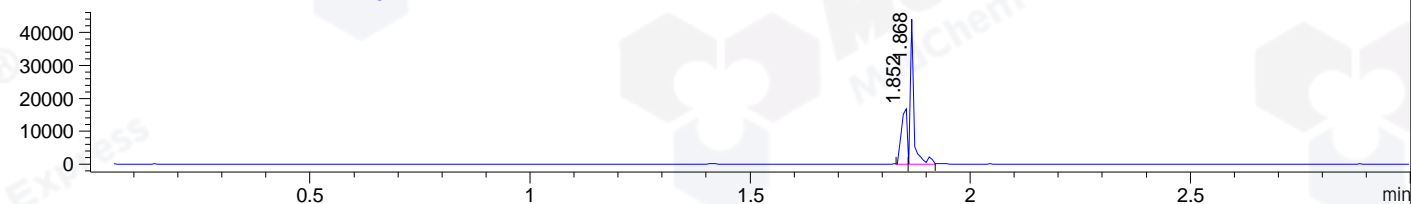
DAD1 C, Sig=254,4 Ref=off



MSD1 TIC, MS File ES-API, Pos, Scan, Frag: 70



Ion 470.415, MSD1 470.415, Target Mass 469.415 +H Positive, EIC=470.12:471.12



Integration Results for DAD1 B, Sig=214,4 Ref=off

RetTim	Width	Area	Height	Area%	MS (+)
1.59	0.01	4.32	5.03	0.38	129
1.67	0.01	5.38	5.99	0.48	317
1.79	0.02	12.78	13.54	1.13	474
1.84	0.02	1105.59	906.83	98.01	492

Integration Results for DAD1 C, Sig=254,4 Ref=off

RetTim	Width	Area	Height	Area%	MS (+)
1.67	0.02	3.11	3.02	0.52	317
1.79	0.02	7.20	6.58	1.19	474
1.84	0.02	592.91	531.26	98.29	492

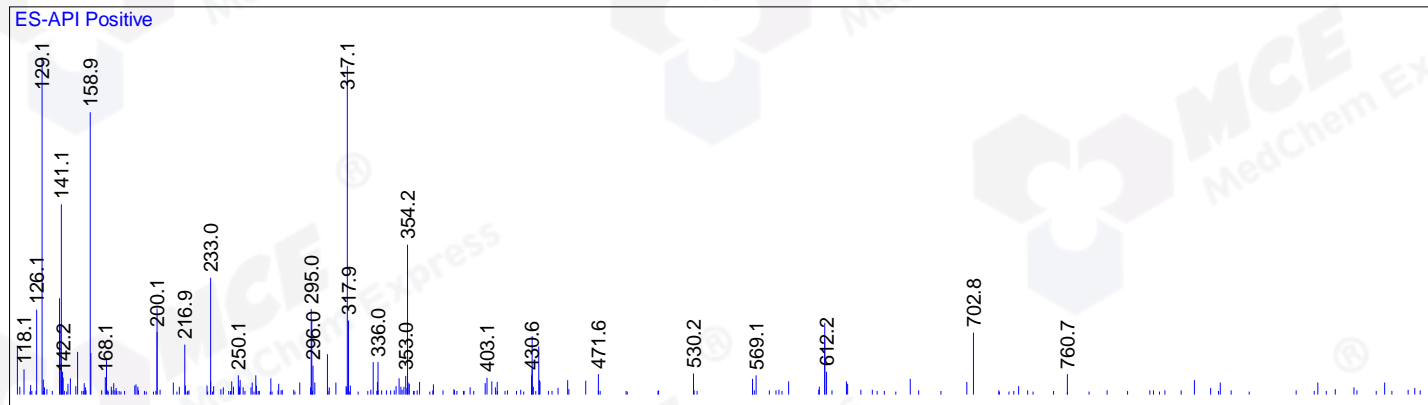
Integration Results for MSD1 TIC, MS File

RetTim	Width	Area	Height	Area%	MS (+)
1.68	0.03	18916.87	7698.99	3.16	129
1.81	0.02	38815.60	22592.11	6.49	474

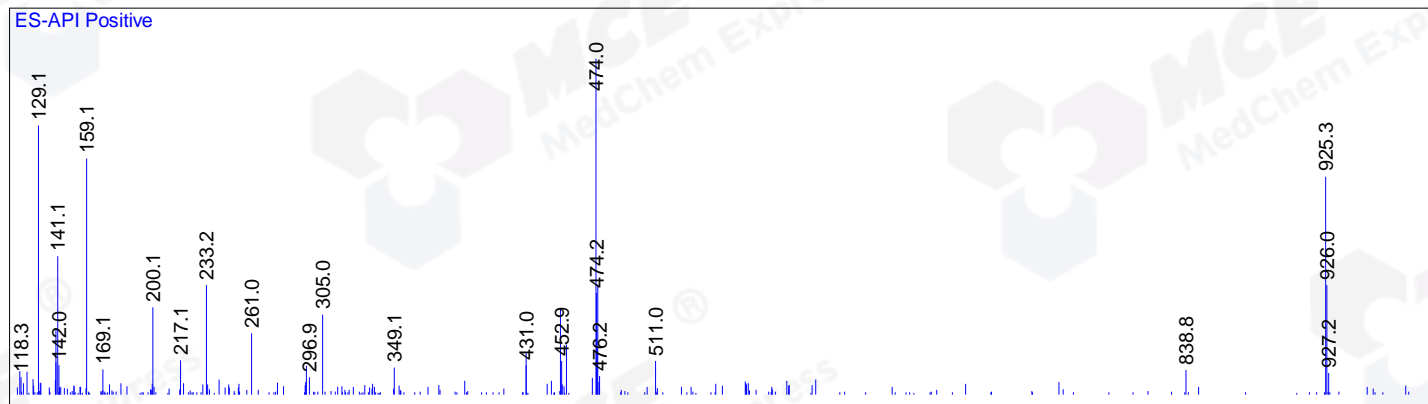
1.85 0.03 540074.63 239820.17 90.34 492

Ret. Time: 1.68

<<<< POSITIVE SPECTRA >>>>



Ret. Time: 1.81



Ret. Time: 1.85

