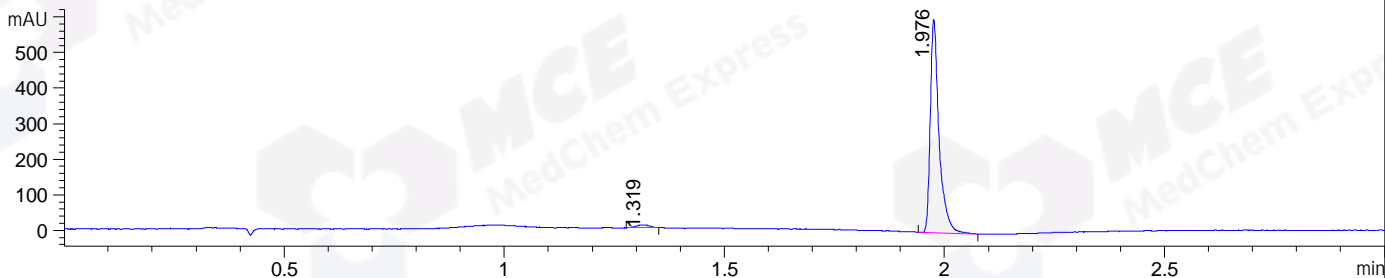
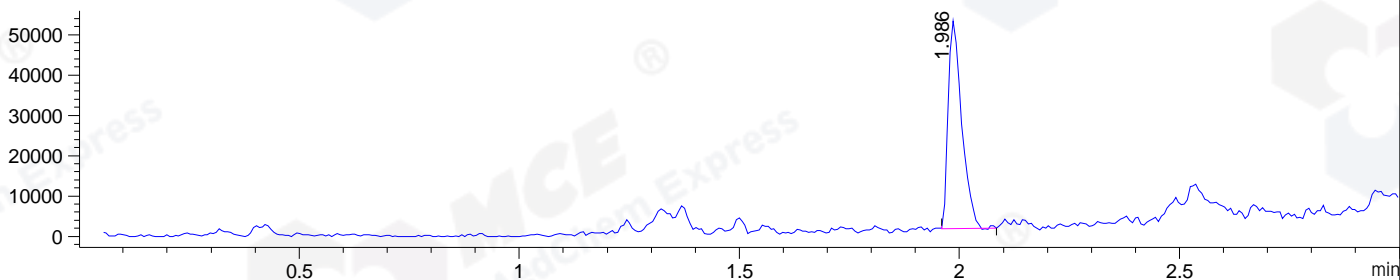


File ..DATA\2019\20191227\795\BIZ2019-D25-SCH11-.D Tgt Mass (CHM):
Injection Date : 27 Dec 19 3:06 pm +0800 Seq. Line : 80
Sample Name : BIZ2019-D25-SCH11 Location : P1-A-09
Acq. Operator : ZJ_1432 Inj : 1
Spec. Reported : MS Integration Inj Volume : 1 ul
Acq. Method : D:\Chem32\1\data\2019\20191227\795\1-POS-3MIN.M
Analysis Method : D:\CHEM32\1\DATA\2019\20191227\795\1-POS-3MIN.M
Catalog No : HY-111055 Batch#58334
Method Info : Mobile Phase: A: water(0.01%TFA) B:ACN(0.01%TFA)
Gradient: 5% to 95%B within 1.3 min
Flow Rate :1.8ml/min
Column :SunFire C18, 4.6*50mm,3.5um A-RP-433
Oven Temperature : 45

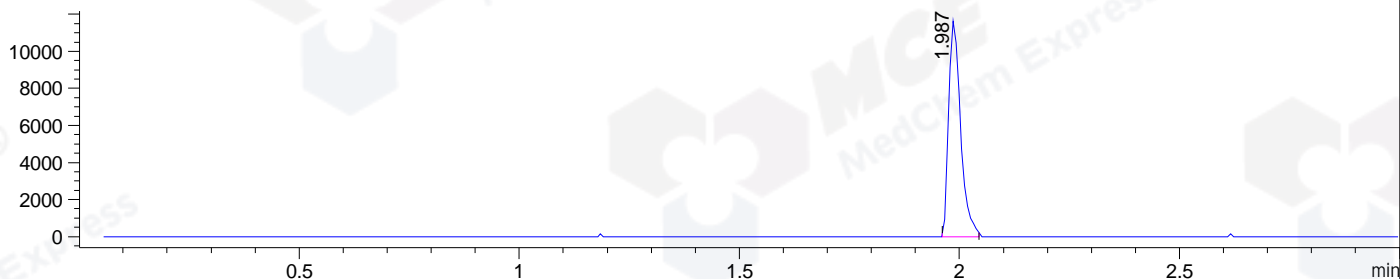
DAD1 B, Sig=214,4 Ref=off



MSD1 TIC, MS File ES-API, Pos, Scan, Frag: 70



Ion 421, MSD1 421, Target Mass 420 +H Positive, EIC=420.7:421.7



Integration Results for DAD1 B, Sig=214,4 Ref=off

RetTim	Width	Area	Height	Area%	MS (+)
1.32	0.03	14.35	7.37	1.69	250
1.98	0.02	833.32	599.47	98.31	421

Integration Results for MSD1 TIC, MS File

RetTim	Width	Area	Height	Area%	MS (+)
1.99	0.03	110386.04	51462.48	100.00	421

Ret. Time: 1.99

<<<< POSITIVE SPECTRA >>>>

