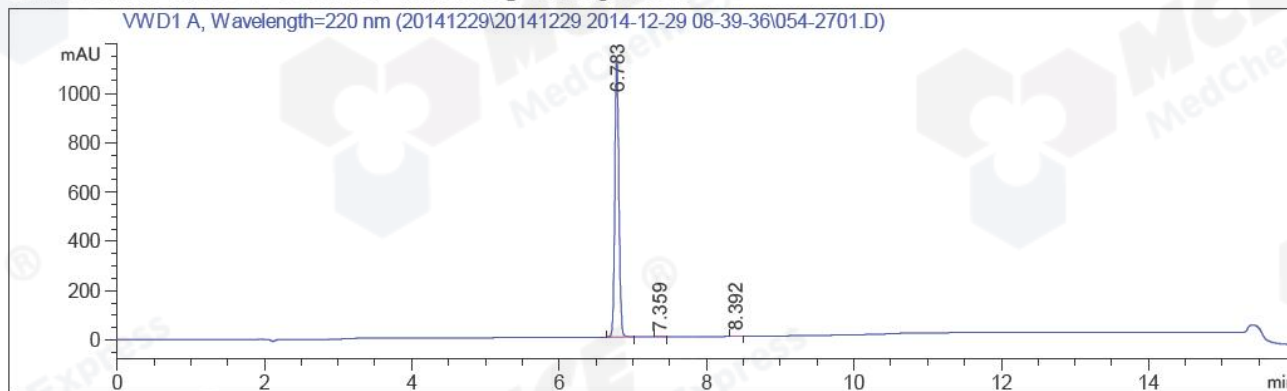


=====
Acq. Operator : CYL(HPLC-10) Seq. Line : 27
Acq. Instrument : Instrument 1 Location : Vial 54
Injection Date : 2014-12-29 17:37:51 Inj : 1
Inj Volume : 5.000 µl
Acq. Method : D:\CHEM\DATA\20141229\20141229 2014-12-29 08-39-36\10-80A,220NM.M
Last changed : 2014-08-01 16:06:31 by XLY(HPLC-10)
Analysis Method : D:\CHEM\METHODS\HM-297C_12-H01P(RP-HPLC) INTERGRATION.M
Last changed : 2014-12-30 08:45:41 by CYL(HPLC-10)
(modified after loading)
Catalog No : HY-11106 Batch#14486
A-RP-93

Additional Info : Peak(s) manually integrated



=====
Area Percent Report
=====

Sorted By : Signal
Multiplier: : 1.0000
Dilution: : 1.0000
Use Multiplier & Dilution Factor with ISTDs

Signal 1: VWD1 A, Wavelength=220 nm

Peak #	RetTime [min]	Type	Width [min]	Area [mAU*s]	Height [mAU]	Area %
1	6.783	BB	0.0594	4311.17578	1133.42712	99.9307
2	7.359	BB	0.0552	8.56572e-1	2.48785e-1	0.0199
3	8.392	BB	0.0633	2.13298	5.15739e-1	0.0494

Totals : 4314.16534 1134.19165

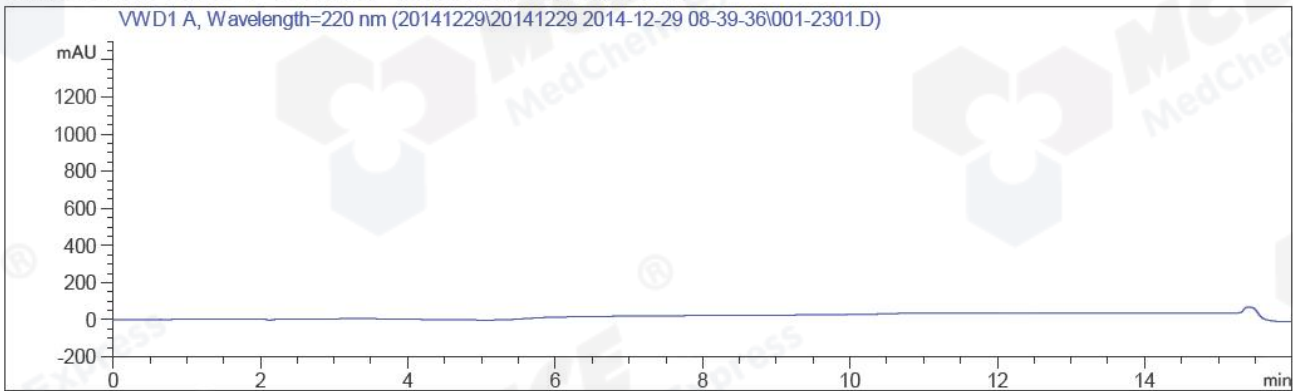
=====
*** End of Report ***

Sample Name: WZ2439-001-1_0

=====

Acq. Operator	: CYL(HPLC-10)	Seq. Line	: 23
Acq. Instrument	: Instrument 1	Location	: Vial 1
Injection Date	: 2014-12-29 16:24:16	Inj	: 1
		Inj Volume	: 5.000 µl
Acq. Method	: D:\CHEM\DATA\20141229\20141229 2014-12-29 08-39-36\10-80A,220NM.M		
Last changed	: 2014-08-01 16:06:31 by XLY(HPLC-10)		
Analysis Method	: D:\CHEM\METHODS\HM-297C_12-H01P(RP-HPLC) INTERGRATION.M		
Last changed	: 2014-12-30 08:43:39 by CYL(HPLC-10) (modified after loading)		
Catalog No	: HY-11106 Batch#14486 A-RP-93		

Additional Info : Peak(s) manually integrated



=====
Area Percent Report
=====

Sorted By : Signal
Multiplier: : 1.0000
Dilution: : 1.0000
Use Multiplier & Dilution Factor with ISTDs

No peaks found

=====
*** End of Report ***