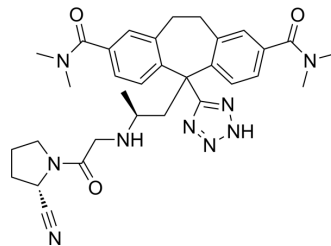


AMG-222

Cat. No.:	HY-111150
CAS No.:	913978-37-7
Molecular Formula:	C ₃₂ H ₃₉ N ₉ O ₃
Molecular Weight:	597.71
Target:	Dipeptidyl Peptidase
Pathway:	Metabolic Enzyme/Protease
Storage:	Please store the product under the recommended conditions in the Certificate of Analysis.



BIOLOGICAL ACTIVITY

Description	AMG-222 is a dipeptidyl peptidase IV (DPP-IV) inhibitor that exerts its inhibitory effect by tightly and reversibly binding to DPP-IV. AMG 222 binds to human plasma proteins in a saturable and concentration-dependent manner, with a binding rate of 80.8% at 1 nM, while the binding rate decreases to 29.4% at concentrations above 100 nM. AMG-222 can be used in research related to diabetes ^[1] .
IC ₅₀ & Target	DPP-4

REFERENCES

[1]. Greene R J, et al. Target-mediated metabolism and target-mediated drug disposition of the DPP-IV inhibitor AMG 222[J]. Xenobiotica, 2011, 41(11): 945-957.

Caution: Product has not been fully validated for medical applications. For research use only.

Tel: 609-228-6898

Fax: 609-228-5909

E-mail: tech@MedChemExpress.com

Address: 1 Deer Park Dr, Suite Q, Monmouth Junction, NJ 08852, USA