

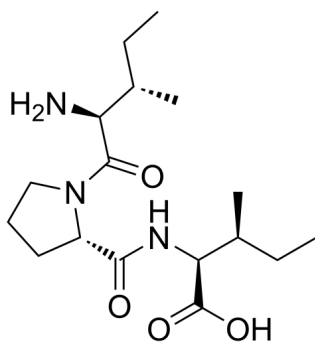
## Diprotin A

Cat. No.: HY-111174  
Batch No.: 231262  
CAS No.: 90614-48-5  
Molecular Formula: C<sub>17</sub>H<sub>31</sub>N<sub>3</sub>O<sub>4</sub>

### ANALYTICAL DATA

Theoretical: C(-), H(-), N(-), Peptide Content(≥60.0%)  
Result: C(53.03%), H(8.99%), N(11.32%), Peptide Content(92.00%)

Chemical Structure:



**Caution: Product has not been fully validated for medical applications. For research use only.**

Tel: 609-228-6898

Fax: 609-228-5909

E-mail: tech@MedChemExpress.com

Address: 1 Deer Park Dr, Suite Q, Monmouth Junction, NJ 08852, USA