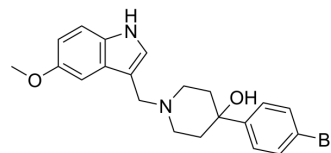


## SV 156

Cat. No.:	HY-111242
CAS No.:	873445-60-4
Molecular Formula:	C <sub>21</sub> H <sub>23</sub> BrN <sub>2</sub> O <sub>2</sub>
Molecular Weight:	415.32
Target:	Dopamine Receptor
Pathway:	GPCR/G Protein; Neuronal Signaling
Storage:	Please store the product under the recommended conditions in the Certificate of Analysis.



## BIOLOGICAL ACTIVITY

<b>Description</b>	SV 156 is a potent and selective D2 dopamine receptor antagonist, with a K <sub>i</sub> of 2.5 nM for hD2. SV 156 has approximately 40-fold binding selectivity for D2 dopamine receptors compared to the D3 receptor subtype. SV 156 can be used for L-DOPA (HY-N0304)-associated abnormal involuntary movements (AIMs) research <sup>[1]</sup> .		
<b>IC<sub>50</sub> &amp; Target</b>	Human D <sub>2</sub> Receptor 2.5 ± 0.4 nM (K <sub>i</sub> )	Human D <sub>3</sub> Receptor 96.9 ± 4.3 nM (K <sub>i</sub> )	Human D <sub>4</sub> Receptor 700 ± 56 nM (K <sub>i</sub> )

## REFERENCES

[1]. Kumar R, et al. Evaluation of D2 and D3 dopamine receptor selective compounds on L-dopa-dependent abnormal involuntary movements in rats. *Neuropharmacology*. 2009 May-Jun;56(6-7):956-69.

**Caution: Product has not been fully validated for medical applications. For research use only.**

Tel: 609-228-6898

Fax: 609-228-5909

E-mail: tech@MedChemExpress.com

Address: 1 Deer Park Dr, Suite Q, Monmouth Junction, NJ 08852, USA