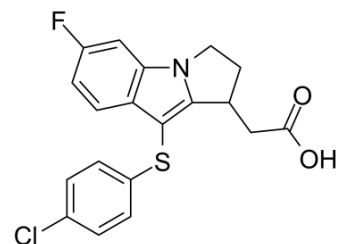


## L 888607 Racemate

Cat. No.:	HY-111271A		
CAS No.:	1030017-51-6		
Molecular Formula:	C <sub>19</sub> H <sub>15</sub> ClFNO <sub>2</sub> S		
Molecular Weight:	375.84		
Target:	Prostaglandin Receptor		
Pathway:	GPCR/G Protein		
Storage:	Powder	-20°C	3 years
		4°C	2 years
	In solvent	-80°C	6 months
		-20°C	1 month



### SOLVENT & SOLUBILITY

#### In Vitro

DMSO : 6 mg/mL (15.96 mM; Need ultrasonic)  
 H<sub>2</sub>O : < 0.1 mg/mL (insoluble)

Preparing Stock Solutions	Solvent Concentration	Mass		
		1 mg	5 mg	10 mg
	1 mM	2.6607 mL	13.3035 mL	26.6071 mL
	5 mM	0.5321 mL	2.6607 mL	5.3214 mL
	10 mM	0.2661 mL	1.3304 mL	2.6607 mL

Please refer to the solubility information to select the appropriate solvent.

#### In Vivo

- Add each solvent one by one: 10% DMSO >> 40% PEG300 >> 5% Tween-80 >> 45% saline  
 Solubility: ≥ 0.6 mg/mL (1.60 mM); Clear solution
- Add each solvent one by one: 10% DMSO >> 90% (20% SBE-β-CD in saline)  
 Solubility: ≥ 0.6 mg/mL (1.60 mM); Clear solution
- Add each solvent one by one: 10% DMSO >> 90% corn oil  
 Solubility: ≥ 0.6 mg/mL (1.60 mM); Clear solution

### BIOLOGICAL ACTIVITY

#### Description

L 888607 Racemate is a selective prostaglandin D<sub>2</sub> receptor subtype 1 (DP1) antagonist, with K<sub>i</sub>s of 132 nM and 17 nM for DP1 and thromboxane A<sub>2</sub> receptor (TP), respectively.

#### IC<sub>50</sub> & Target

DP/DP1	TP
132 nM (K <sub>i</sub> )	17 nM (K <sub>i</sub> )

---

**In Vitro**

L 888607 Racemate (compound 3) maintains a modest binding affinity for the DP1 receptor ( $K_i = 132$  nM) and is actually 8-fold more potent on the TP receptor ( $K_i = 17$  nM)<sup>[1]</sup>.

---

**REFERENCES**

[1]. Beaulieu C, et al. Identification of prostaglandin D2 receptor antagonists based on a tetrahydropyridoindole scaffold. *Bioorg Med Chem Lett*. 2008 Apr 15;18(8):2696-700.

---

**Caution: Product has not been fully validated for medical applications. For research use only.**

Tel: 609-228-6898

Fax: 609-228-5909

E-mail: [tech@MedChemExpress.com](mailto:tech@MedChemExpress.com)

Address: 1 Deer Park Dr, Suite Q, Monmouth Junction, NJ 08852, USA