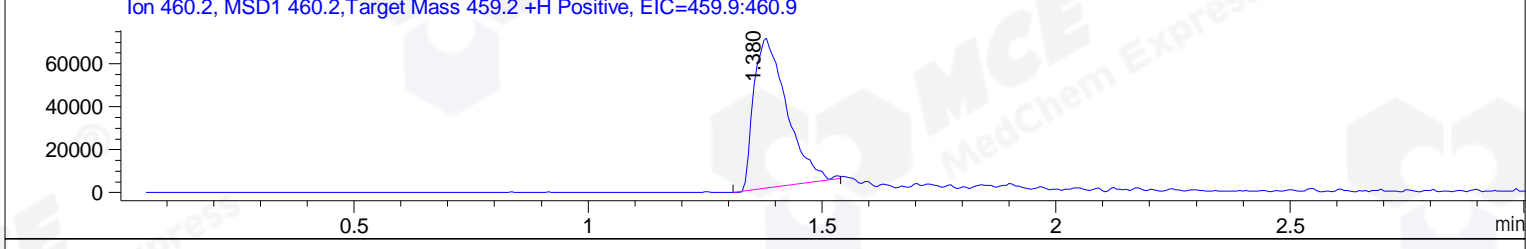
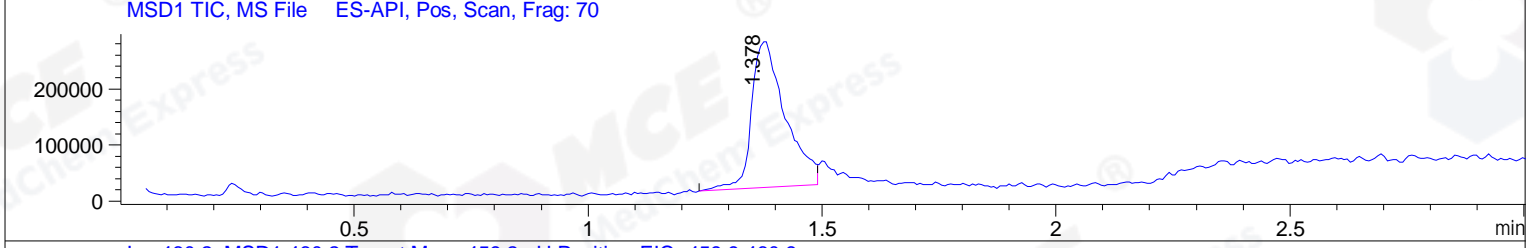
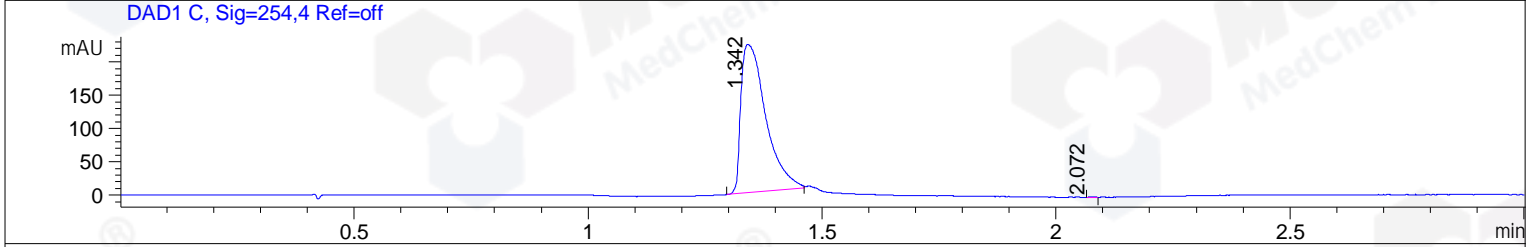
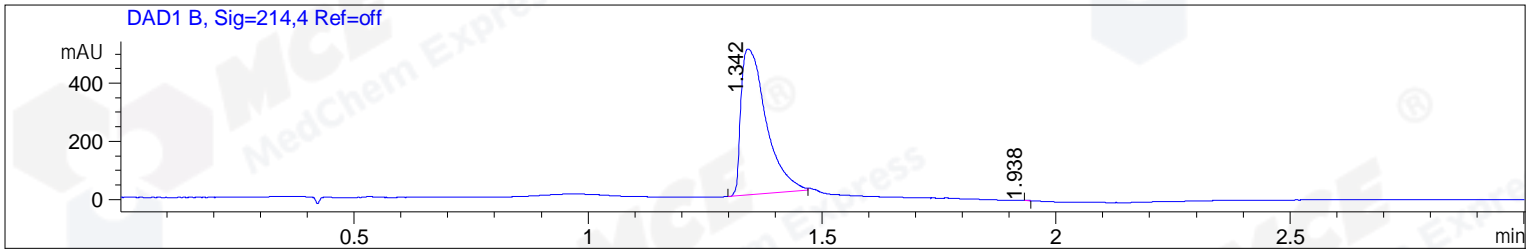


File ..ATA\2018\20181212\523\BIZ2018-D11-CXL27.D Tgt Mass (CHM):  
 Injection Date : 12 Dec 18 10:24 am +0800 Seq. Line : 16  
 Sample Name : BIZ2018-D11-CXL27 Location : P2-A-06  
 Acq. Operator : LQ\_1052 Inj : 1  
 Spec. Reported : MS Integration Inj Volume : 1 ul  
 Acq. Method : D:\Chem32\1\data\2018\20181212\523\1-POS-3MIN-1.M  
 Analysis Method : D:\CHEM32\1\DATA\2018\20181212\523\1-POS-3MIN-1.M  
 Catalog No : HY-111347A Batch#35314 A-RP-314  
 Method Info : Mobile Phase: A: water(0.01%TFA) B:ACN(0.01%TFA)  
 Gradient: 5% to 95%B within 1.3 min  
 Flow Rate :1.8ml/min  
 Column :SunFire C18, 4.6\*50mm,3.5um A-RP-314  
 Oven Temperature : 45



Integration Results for DAD1 B, Sig=214,4 Ref=off

RetTim	Width	Area	Height	Area%	MS (+)
1.34	0.06	1868.79	501.53	99.98	460
1.94	0.01	0.34	0.72	0.02	141

Integration Results for DAD1 C, Sig=254,4 Ref=off

RetTim	Width	Area	Height	Area%	MS (+)
1.34	0.06	821.41	222.97	99.97	460
2.07	0.02	0.21	0.23	0.03	141

Integration Results for MSD1 TIC, MS File

RetTim	Width	Area	Height	Area%	MS (+)
1.38	0.07	1302157.63	260582.72	100.00	460

Ret. Time: 1.38

<<<< POSITIVE SPECTRA >>>>

ES-API Positive

