

File ..DATA\2019\20190304\544\BIZ2019-304-CXL7.D Tgt Mass (CHM):

Injection Date : 4 Mar 19 5:48 pm +0800 Seq. Line : 63

Sample Name : BIZ2019-304-CXL7 Location : P2-E-09

Acq. Operator : LQ_1052 Inj : 1

Spec. Reported : MS Integration Inj Volume : 0.2 ul

Acq. Method : D:\Chem32\1\data\2019\20190304\544\1-POS-3MIN-1.M

Analysis Method : D:\CHEM32\1\DATA\2019\20190304\544\1-POS-3MIN-1.M

Catalog No : HY-111350 Batch#38653

Method Info : Mobile Phase: A: water(0.01%TFA) B:ACN(0.01%TFA)

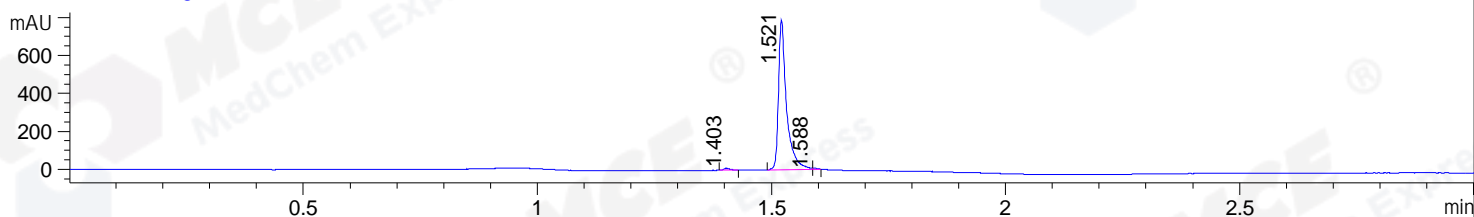
Gradient: 5% to 95%B within 1.3 min

Flow Rate :1.8ml/min

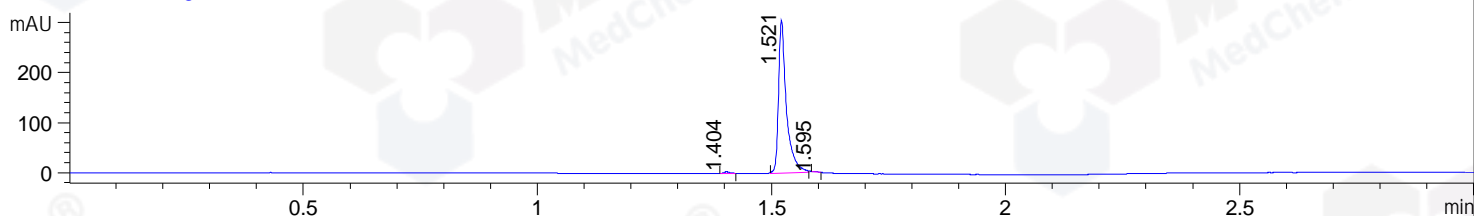
Column :SunFire C18, 4.6*50mm,3.5um A-RP-314

Oven Temperature : 45

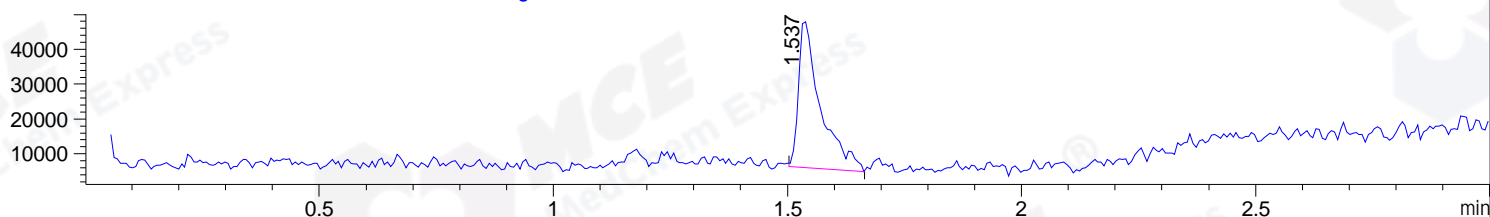
DAD1 B, Sig=214,4 Ref=off



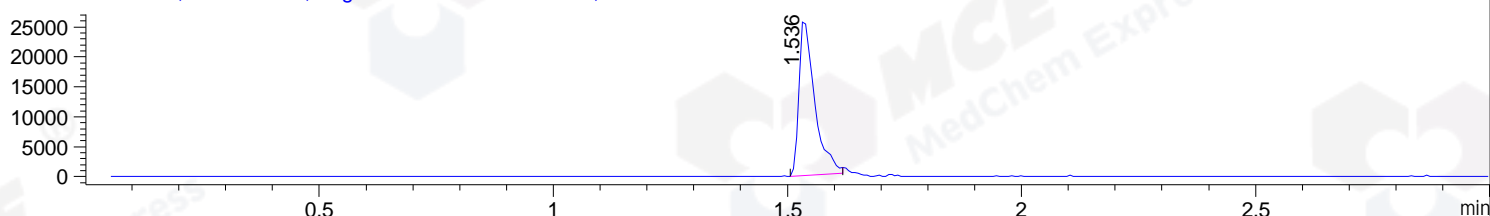
DAD1 C, Sig=254,4 Ref=off



MSD1 TIC, MS File ES-API, Pos, Scan, Frag: 70



Ion 549.2, MSD1 549.2, Target Mass 548.2 +H Positive, EIC=548.9:549.9



Integration Results for DAD1 B, Sig=214,4 Ref=off

RetTim	Width	Area	Height	Area%	MS (+)
1.40	0.02	10.63	10.13	1.10	226
1.52	0.02	949.67	791.28	98.48	549
1.59	0.01	4.07	6.64	0.42	549

Integration Results for DAD1 C, Sig=254,4 Ref=off

RetTim	Width	Area	Height	Area%	MS (+)
1.40	0.02	3.59	3.66	0.99	226
1.52	0.02	358.72	305.07	98.90	549
1.60	0.01	0.38	0.53	0.11	549

Integration Results for MSD1 TIC, MS File

RetTim	Width	Area	Height	Area%	MS (+)
1.54	0.05	137938.88	42286.04	100.00	549

Ret. Time: 1.54

<<<< POSITIVE SPECTRA >>>>

ES-API Positive

