

File ..ta\2018\20180507\20180507\BIZ2018-507-CXL2.D Tgt Mass (CHM):

Injection Date : 8 May 18 12:14 am +0800 Seq. Line : 97

Sample Name : BIZ2018-507-CXL2 Location : P2-A-10

Acq. Operator : SYSTEM Inj : 1

Spec. Reported : MS Integration Inj Volume : 1 ul

Acq. Method : D:\LCMS03\Data\2018\20180507\20180507\1-POS-3MIN.M

Analysis Method : D:\LCMS03\Data\2018\20180507\20180507\1-POS-3MIN.M

Catalog No : HY-111400 Batch#29867

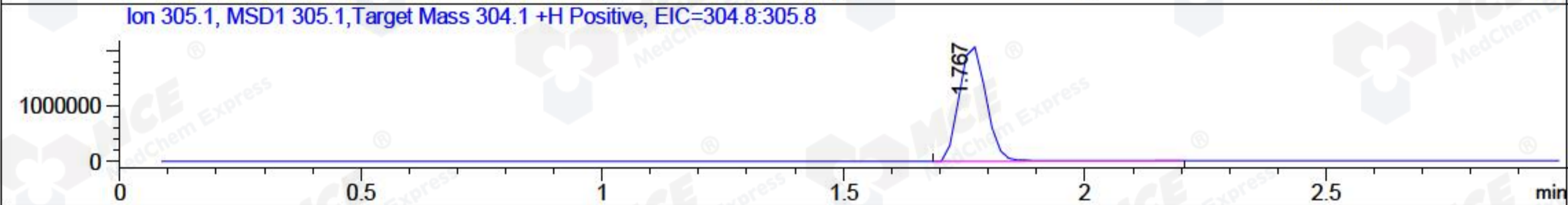
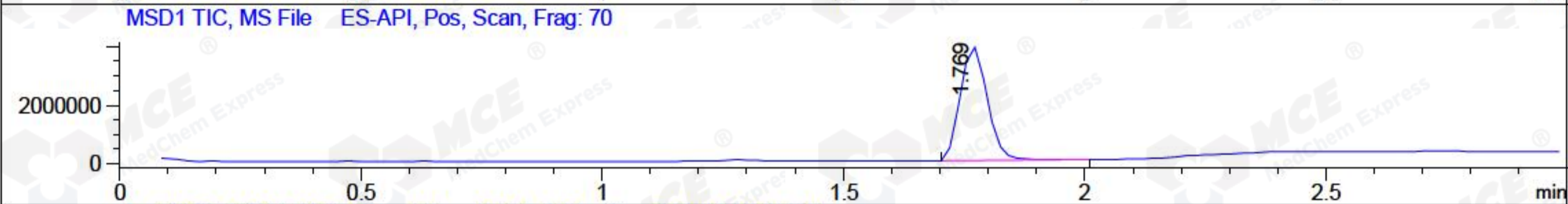
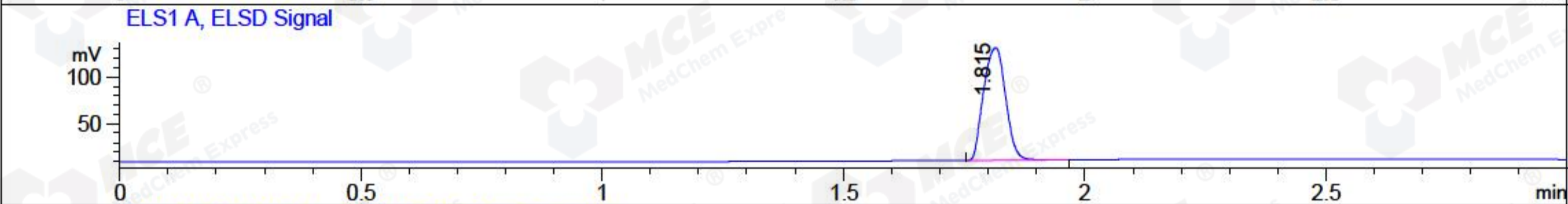
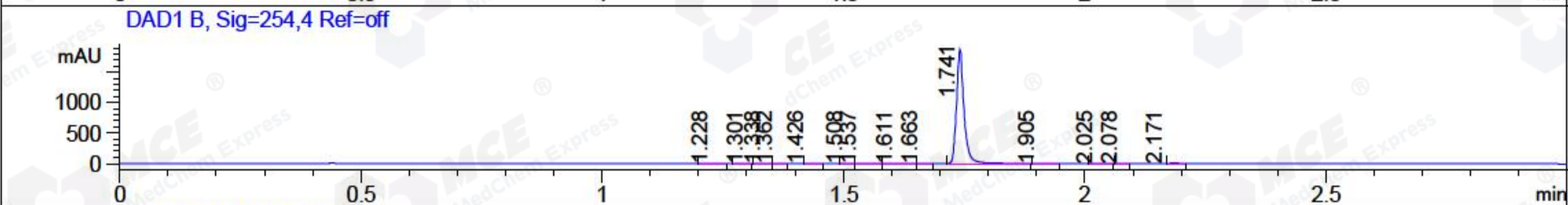
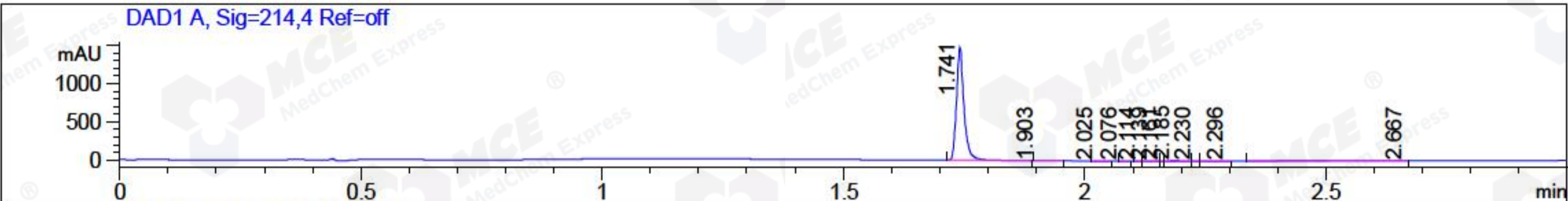
Method Info : Mobile Phase: A: water(0.01%TFA) B:ACN(0.01%TFA)

Gradient: 5% to 95%B within 1.3 min

Flow Rate :1.8ml/min

Column :SunFire C18, 4.6\*50mm,3.5um A-RP-186

Oven Temperature : 45C



Integration Results for DAD1 A, Sig=214,4 Ref=off

RetTim	Width	Area	Height	Area%	MS (+)
1.74	0.02	1596.60	1474.42	98.33	305
1.90	0.02	0.97	0.75	0.06	233
2.03	0.02	0.87	0.62	0.05	233
2.08	0.01	0.11	0.15	0.01	233
2.11	0.01	0.04	0.07	0.00	233
2.14	0.01	0.29	0.32	0.02	233
2.16	0.01	0.02	0.06	0.00	233
2.19	0.02	7.38	7.14	0.45	233
2.23	0.01	0.03	0.09	0.00	233
2.30	0.04	0.62	0.19	0.04	233
2.67	1.07	16.73	0.18	1.03	105

Integration Results for DAD1 B, Sig=254,4 Ref=off

RetTim	Width	Area	Height	Area%	MS (+)
1.23	0.02	0.35	0.20	0.02	266
1.30	0.02	0.11	0.08	0.01	266
1.34	0.01	0.29	0.33	0.01	266



1.36	0.01	0.14	0.18	0.01	233
1.43	0.02	0.08	0.07	0.00	233
1.51	0.02	0.11	0.10	0.01	233
1.54	0.02	0.45	0.34	0.02	233
1.61	0.02	0.69	0.41	0.03	233
1.66	0.01	0.14	0.15	0.01	233
1.74	0.02	2000.34	1866.09	99.50	305
1.90	0.02	1.40	1.17	0.07	233
2.03	0.02	1.01	0.75	0.05	233
2.08	0.01	0.22	0.24	0.01	233
2.17	0.02	5.04	0.08	0.25	233

## Integration Results for ELS1 A, ELSD Signal

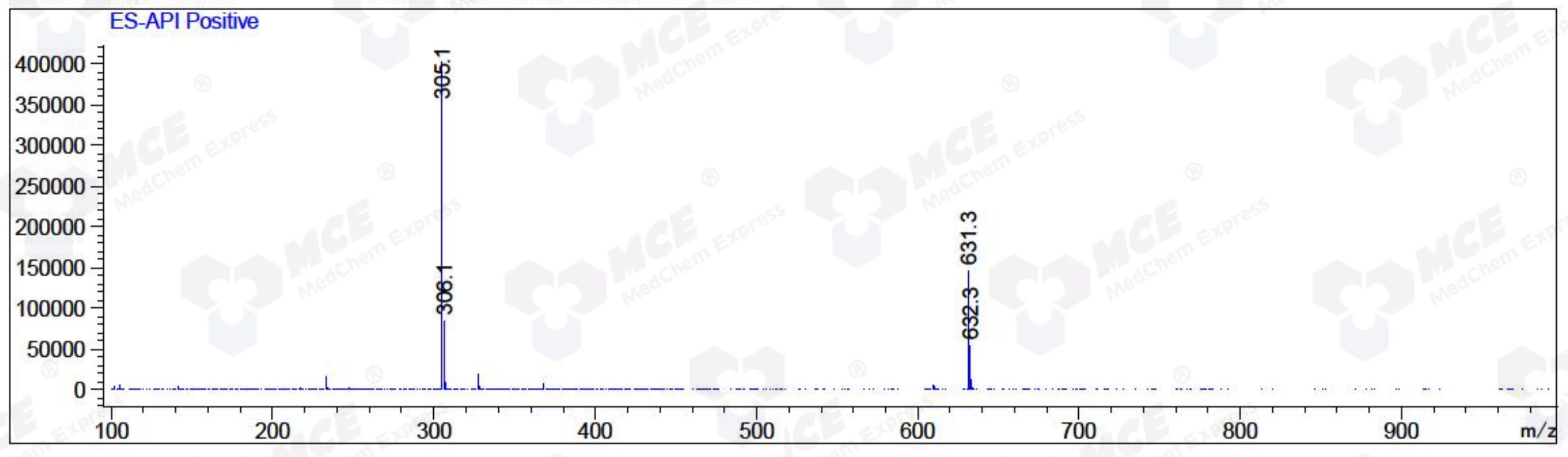
RetTim	Width	Area	Height	Area%	MS (+)
1.82	0.05	383.55	120.36	100.00	305

## Integration Results for MSD1 TIC, MS File

RetTim	Width	Area	Height	Area%	MS (+)
1.77	0.06	15096673.00	3884520.50	100.00	305

Ret. Time: 1.77

<<<< POSITIVE SPECTRA >>>>





\*\*\* End of Report \*\*\*