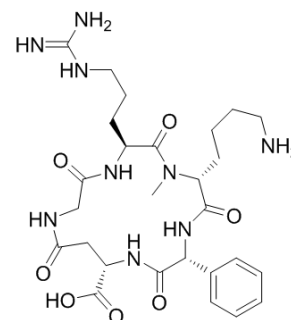


## c(phg-isoD-G-R-(NMe)k)

Cat. No.:	HY-111413
CAS No.:	1844830-65-4
Molecular Formula:	C <sub>27</sub> H <sub>41</sub> N <sub>9</sub> O <sub>7</sub>
Molecular Weight:	603.67
Target:	Integrin
Pathway:	Cytoskeleton
Storage:	Please store the product under the recommended conditions in the COA.



### BIOLOGICAL ACTIVITY

Description	c(phg-isoD-G-R-(NMe)k) is a selective $\alpha 5\beta 1$ integrin ligand with an IC <sub>50</sub> of 2.9 nM.
IC <sub>50</sub> & Target	IC <sub>50</sub> : 2.9 nM ( $\alpha 5\beta 1$ ) <sup>[1]</sup>

### REFERENCES

[1]. Kapp TG, et al. N-Methylation of isoDGR Peptides: Discovery of a Selective  $\alpha 5\beta 1$ -Integrin Ligand as a Potent Tumor Imaging Agent. J Med Chem. 2018 Mar 22;61(6):2490-2499.

**Caution: Product has not been fully validated for medical applications. For research use only.**

Tel: 609-228-6898

Fax: 609-228-5909

E-mail: tech@MedChemExpress.com

Address: 1 Deer Park Dr, Suite Q, Monmouth Junction, NJ 08852, USA