

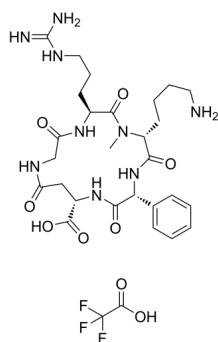
c(phg-isoDGR-(NMe)k) (TFA)

Cat. No.: HY-111413A
Batch No.: 255541
Molecular Formula: C₂₉H₄₂F₃N₉O₉

ANALYTICAL DATA

Theoretical: C(-), H(-), N(-), Peptide Content(≥60.0%)
Result: C(41.78%), H(5.56%), N(15.19%), Peptide Content(72.70%)

Chemical Structure:



Caution: Product has not been fully validated for medical applications. For research use only.

Tel: 609-228-6898

Fax: 609-228-5909

E-mail: tech@MedChemExpress.com

Address: 1 Deer Park Dr, Suite Q, Monmouth Junction, NJ 08852, USA