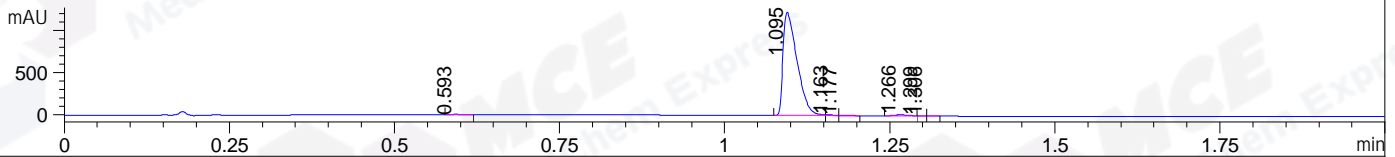
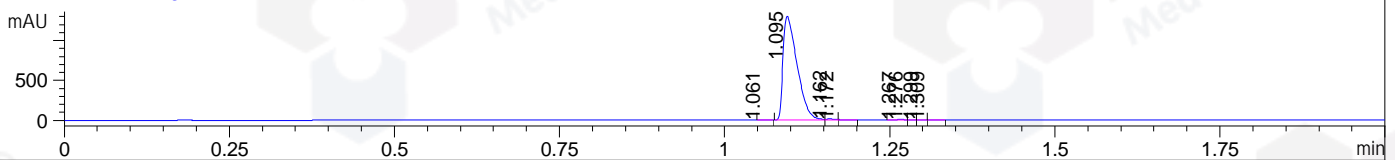


File ..0200521 2020-05-21 08-45-22\WXS7803-045-2.D Tgt Mass (CHM):
 Injection Date : 21 May 20 10:30 am +0800 Seq. Line : 27
 Sample Name : WXS7803-045-2 Location : P2-C-07
 Acq. Operator : SYSTEM Inj : 1
 Spec. Reported : MS Integration Inj Volume : 0.5 ul
 Acq. Method : D:\LCMS03\Data\20200521\20200521 2020-05-21 08-45-22\1-POS-UPLC2.0MIN(0.8ML)
 Analysis Method : D:\LCMS03\Data\20200521\20200521 2020-05-21 08-45-22\1-POS-UPLC2.0MIN(0.8ML) .1
 Catalog No : HY-111429
 Method Info : Mobile Phase: A: water(0.01%TFA) B:ACN(0.01%TFA)
 Gradient: 5% to 95%B within 0.6 min
 Flow Rate :0.8ml/min
 Column :Poroshell 120 EC- C18, 2.1*50mm,1.9um A-RP-530
 Oven Temperature : 45C

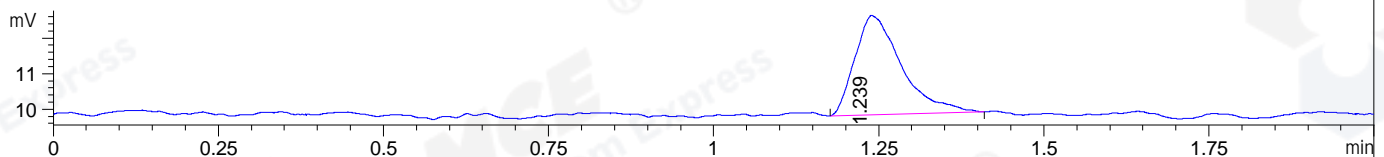
DAD1 A, Sig=214,4 Ref=off



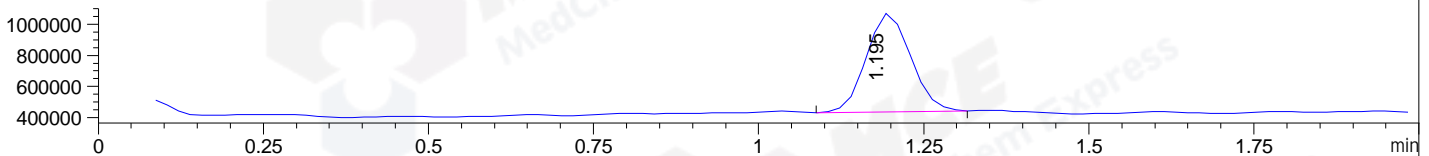
DAD1 B, Sig=254,4 Ref=off



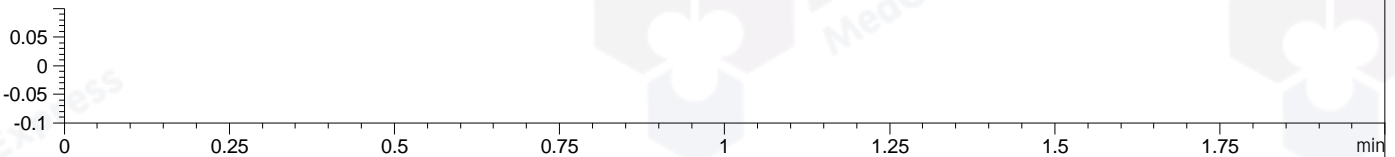
ELS1 A, ELSD Signal



MSD1 TIC, MS File ES-API, Pos, Scan, Frag: 70



Ion 1, MSD1 1, Target Mass 0 +H Positive, EIC=0.7:1.7



Integration Results for DAD1 A, Sig=214,4 Ref=off

RetTim	Width	Area	Height	Area%	MS (+)
0.59	0.02	2.47	2.71	0.13	145
1.09	0.02	1799.26	1219.57	98.05	145
1.16	0.01	7.97	9.33	0.43	622
1.18	0.02	4.11	3.92	0.22	622
1.27	0.02	18.13	13.36	0.99	145
1.30	0.01	2.09	2.67	0.11	145
1.31	0.01	0.99	1.89	0.05	145

Integration Results for DAD1 B, Sig=254,4 Ref=off

RetTim	Width	Area	Height	Area%	MS (+)
1.06	0.01	1.36	1.73	0.07	145
1.10	0.02	1935.86	1302.54	98.50	145
1.16	0.01	12.01	14.00	0.61	622
1.17	0.01	4.07	4.97	0.21	622
1.27	0.01	5.92	6.63	0.30	145
1.28	0.01	1.93	3.38	0.10	145
1.30	0.01	2.41	3.07	0.12	145

1.31 0.01 1.76 2.51 0.09 145

Integration Results for ELS1 A, ELSD Signal

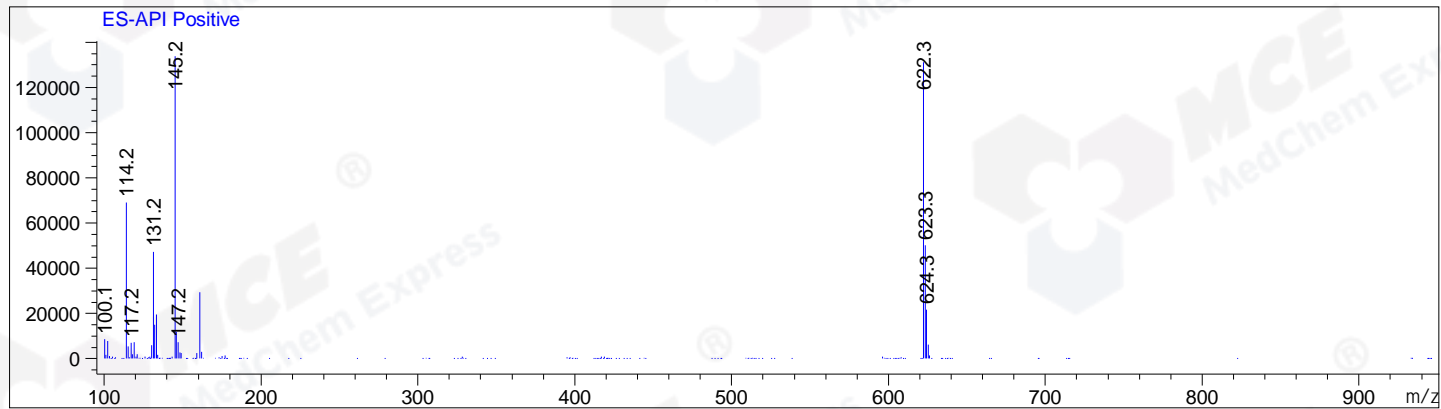
RetTim	Width	Area	Height	Area%	MS (+)
1.24	0.07	13.66	2.79	100.00	145

Integration Results for MSD1 TIC, MS File

RetTim	Width	Area	Height	Area%	MS (+)
1.20	0.07	2939696.25	631908.56	100.00	145

Ret. Time: 1.20

<<<< POSITIVE SPECTRA >>>>



*** End of Report ***