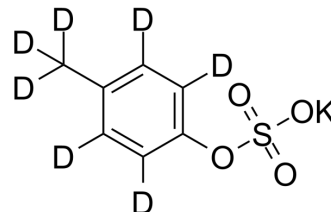


## p-Cresol sulfate-d<sub>7</sub> potassium

<b>Cat. No.:</b>	HY-111431AS
<b>CAS No.:</b>	2469278-96-2
<b>Molecular Formula:</b>	C <sub>7</sub> D <sub>7</sub> KO <sub>4</sub> S
<b>Molecular Weight:</b>	233.33
<b>Target:</b>	Endogenous Metabolite
<b>Pathway:</b>	Metabolic Enzyme/Protease
<b>Storage:</b>	4°C, sealed storage, away from moisture * In solvent : -80°C, 6 months; -20°C, 1 month (sealed storage, away from moisture)



### BIOLOGICAL ACTIVITY

<b>Description</b>	p-Cresol sulfate-d <sub>7</sub> (potassium) is the deuterium labeled p-Cresyl sulfate potassium. p-Methylphenyl potassium sulfate is a prototype protein-bound uremic toxin[1][2].
<b>In Vitro</b>	Stable heavy isotopes of hydrogen, carbon, and other elements have been incorporated into drug molecules, largely as tracers for quantitation during the drug development process. Deuteration has gained attention because of its potential to affect the pharmacokinetic and metabolic profiles of drugs <sup>[1]</sup> . MCE has not independently confirmed the accuracy of these methods. They are for reference only.

### REFERENCES

- [1]. Russak EM, et al. Impact of Deuterium Substitution on the Pharmacokinetics of Pharmaceuticals. *Ann Pharmacother*. 2019;53(2):211-216.
- [2]. Gryp T, et al. p-Cresyl Sulfate. *Toxins (Basel)*. 2017 Jan 29;9(2).

**Caution: Product has not been fully validated for medical applications. For research use only.**

Tel: 609-228-6898

Fax: 609-228-5909

E-mail: tech@MedChemExpress.com

Address: 1 Deer Park Dr, Suite Q, Monmouth Junction, NJ 08852, USA