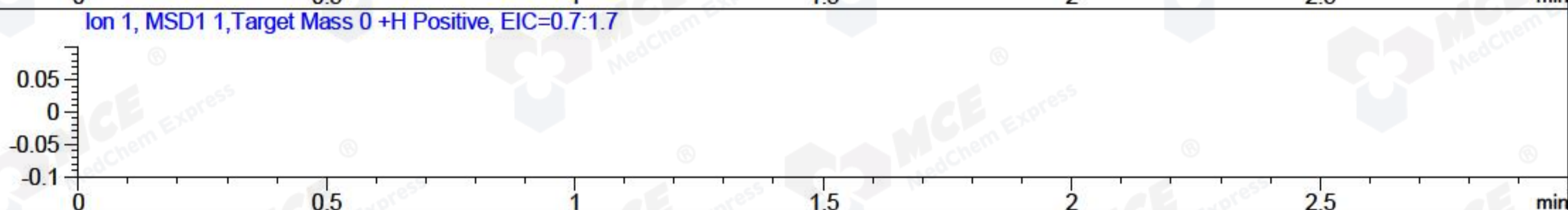
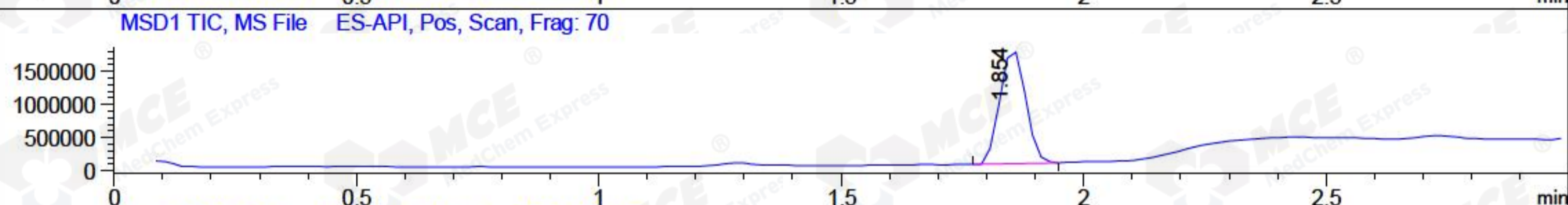
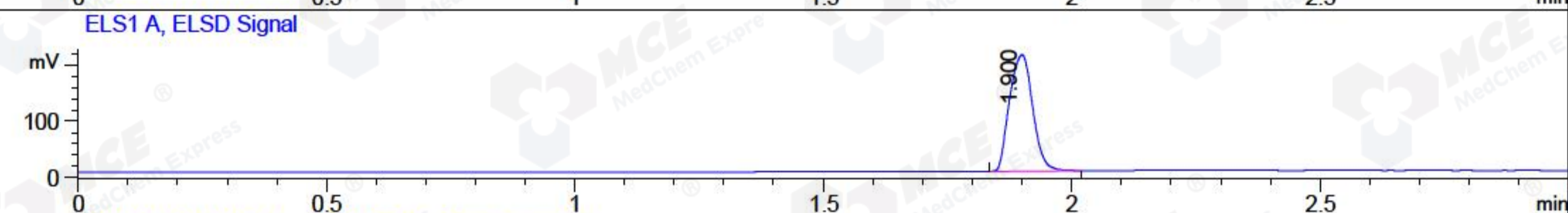
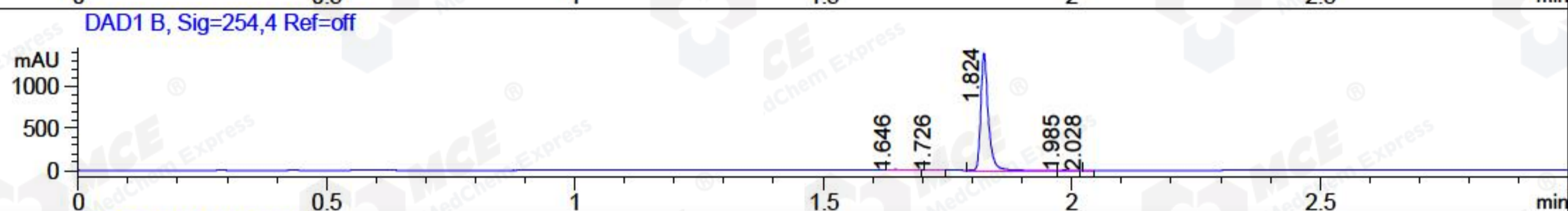
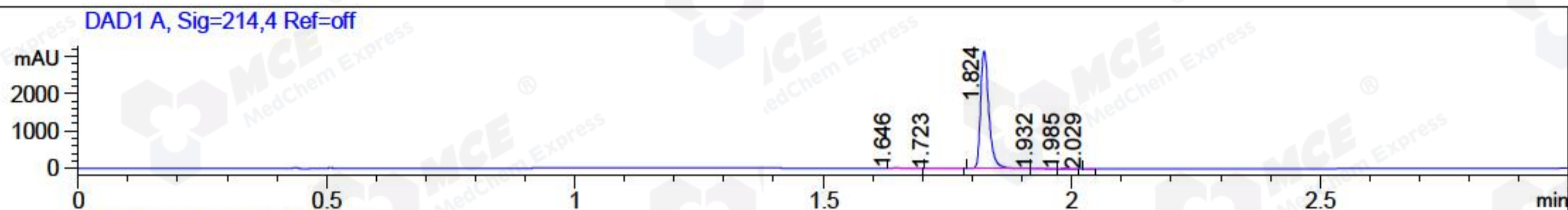


File ..a\2018\20180508\20180508\BIZ2018-508-WYQ4.D Tgt Mass (CHM):
 Injection Date : 8 May 18 7:31 pm +0800 Seq. Line : 106
 Sample Name : BIZ2018-508-WYQ4 Location : P2-B-07
 Acq. Operator : SYSTEM Inj : 1
 Spec. Reported : MS Integration Inj Volume : 2 ul
 Acq. Method : D:\LCMS03\Data\2018\20180508\20180508\1-POS-3MIN.M
 Analysis Method : D:\LCMS03\Data\2018\20180508\20180508\1-POS-3MIN.M
 Catalog No : HY-111444 Batch#29936
 Method Info : Mobile Phase: A: water(0.01%TFA) B:ACN(0.01%TFA)
 Gradient: 5% to 95%B within 1.3 min
 Flow Rate :1.8ml/min
 Column :SunFire C18, 4.6*50mm,3.5um A-RP-186
 Oven Temperature : 45C



Integration Results for DAD1 A, Sig=214,4 Ref=off

RetTim	Width	Area	Height	Area%	MS (+)
1.65	0.02	13.96	13.64	0.38	233
1.72	0.02	8.30	6.08	0.22	233
1.82	0.02	3669.88	3132.07	99.19	322
1.93	0.02	3.86	3.76	0.10	322
1.98	0.01	3.69	3.89	0.10	233
2.03	0.01	0.33	0.41	0.01	233

Integration Results for DAD1 B, Sig=254,4 Ref=off

RetTim	Width	Area	Height	Area%	MS (+)
1.65	0.02	7.84	7.84	0.54	233
1.73	0.02	1.54	1.39	0.11	233
1.82	0.02	1449.63	1385.73	99.22	322
1.98	0.01	1.84	1.87	0.13	233
2.03	0.01	0.12	0.18	0.01	233

Integration Results for ELS1 A, ELSD Signal

1.90 0.05 674.15 208.22 100.00 322

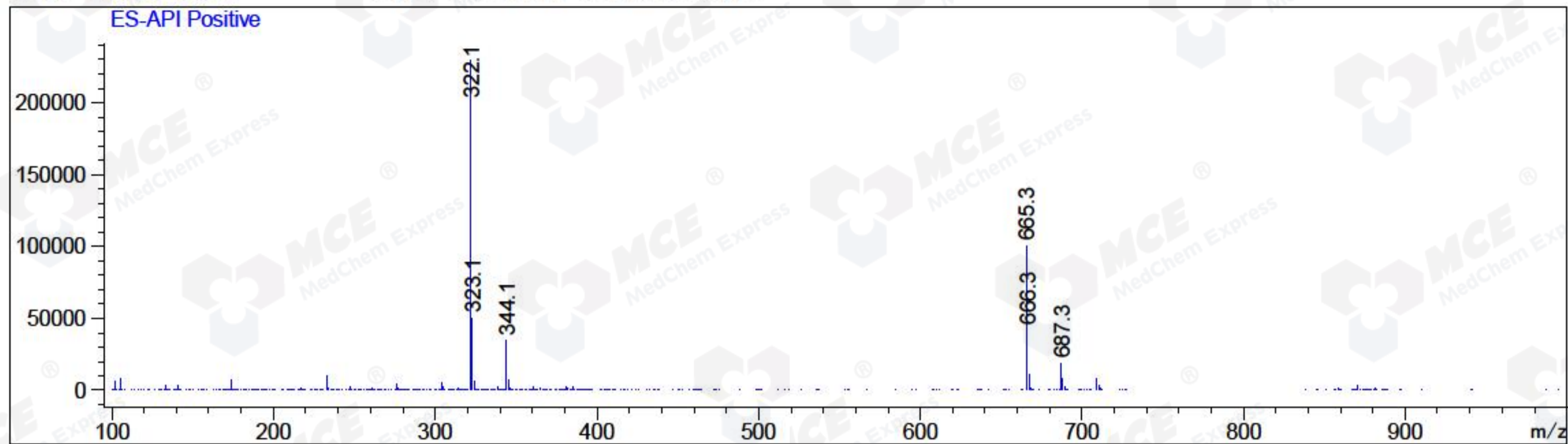
Integration Results for MSD1 TIC, MS File

RetTim	Width	Area	Height	Area%	MS(+)
1.85	0.06	6297905.00	1719775.75	100.00	322

RetTim	Width	Area	Height	Area%	MS(+)
--------	-------	------	--------	-------	-------

Ret. Time: 1.85

<<<< POSITIVE SPECTRA >>>>



*** End of Report ***