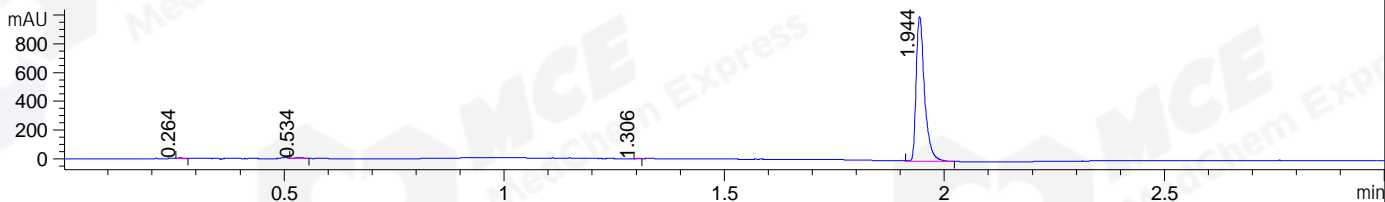
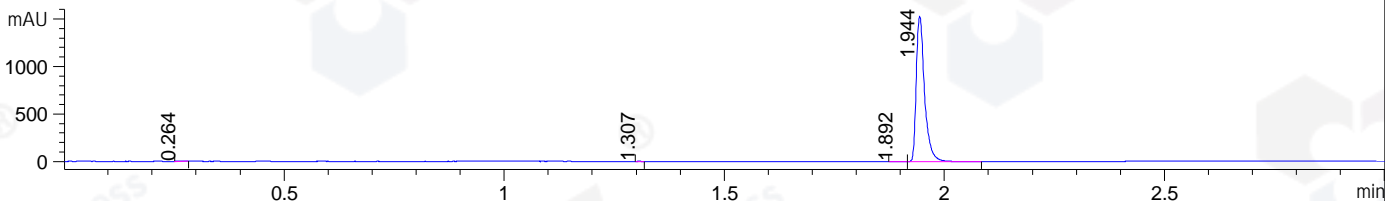


File ..\DATA\2019\20190725\658\BIZ2019-722-WYQ10.D Tgt Mass (CHM):
 Injection Date : 25 Jul 19 4:49 pm +0800 Seq. Line : 66
 Sample Name : BIZ2019-722-WYQ10 Location : P1-D-06
 Acq. Operator : ZJ_1432 Inj : 1
 Spec. Reported : MS Integration Inj Volume : 1 ul
 Acq. Method : D:\Chem32\1\data\2019\20190725\658\1-POS-3MIN.C2.M
 Analysis Method : D:\CHEM32\1\DATA\2019\20190725\658\1-POS-3MIN.C2.M
 Catalog No : HY-111449 Batch# 43829
 Method Info : Mobile Phase: A: water(0.01%TFA) B:ACN(0.01%TFA)
 Gradient: 5% to 95%B within 1.3 min
 Flow Rate :1.8ml/min
 Column :SunFire C18, 4.6*50mm,3.5um A-RP-433
 Oven Temperature : 45□

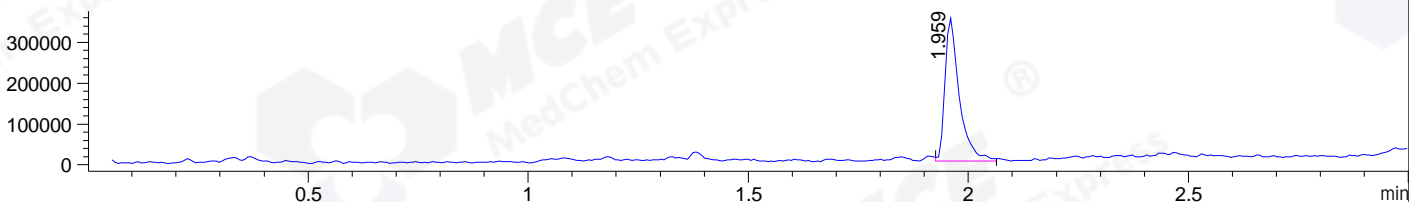
DAD1 B, Sig=214,4 Ref=off



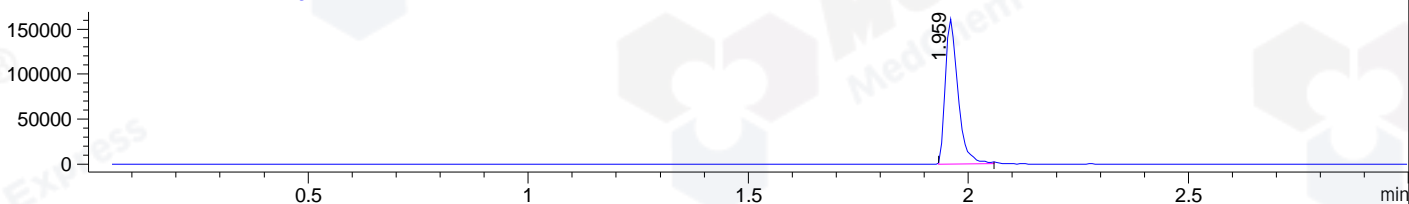
DAD1 C, Sig=254,4 Ref=off



MSD1 TIC, MS File ES-API, Pos, Scan, Frag: 70



Ion 402, MSD1 402, Target Mass 401 +H Positive, EIC=401.7:402.7



Integration Results for DAD1 B, Sig=214,4 Ref=off

RetTim	Width	Area	Height	Area%	MS (+)
0.26	0.01	3.83	4.78	0.29	282
0.53	0.02	6.89	5.37	0.51	ND
1.31	0.01	1.74	2.21	0.13	361
1.94	0.02	1331.12	1004.85	99.07	402

Integration Results for DAD1 C, Sig=254,4 Ref=off

RetTim	Width	Area	Height	Area%	MS (+)
0.26	0.01	3.00	3.43	0.15	282
1.31	0.01	0.94	1.29	0.05	361
1.89	0.02	1.64	1.16	0.08	324
1.94	0.02	2028.48	1533.05	99.73	402

Integration Results for MSD1 TIC, MS File

RetTim	Width	Area	Height	Area%	MS (+)
1.96	0.03	800842.56	350576.03	100.00	402

Ret. Time: 1.96

<<<< POSITIVE SPECTRA >>>>

ES-API Positive

