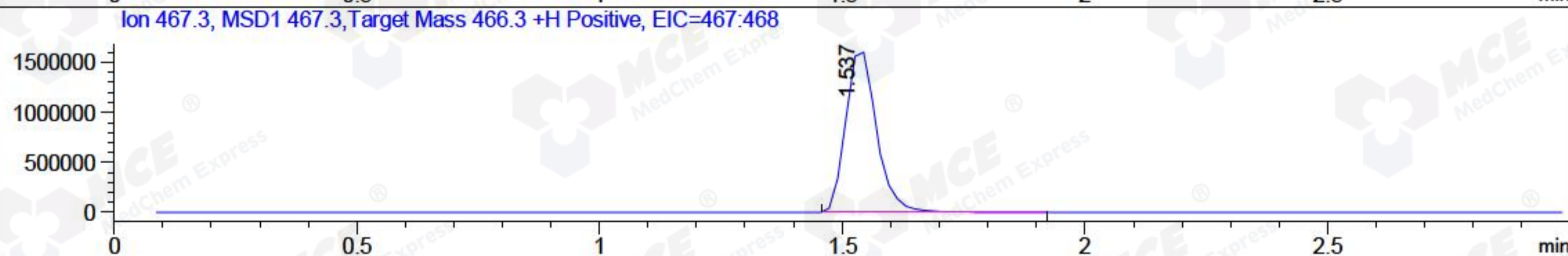
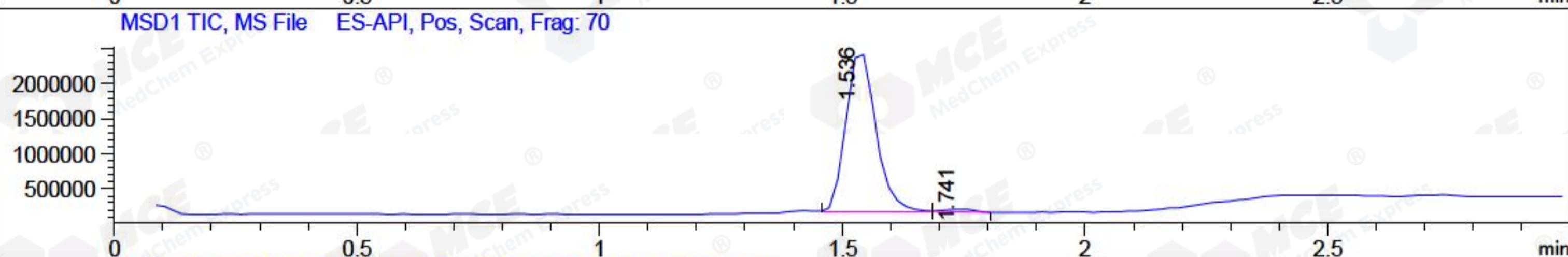
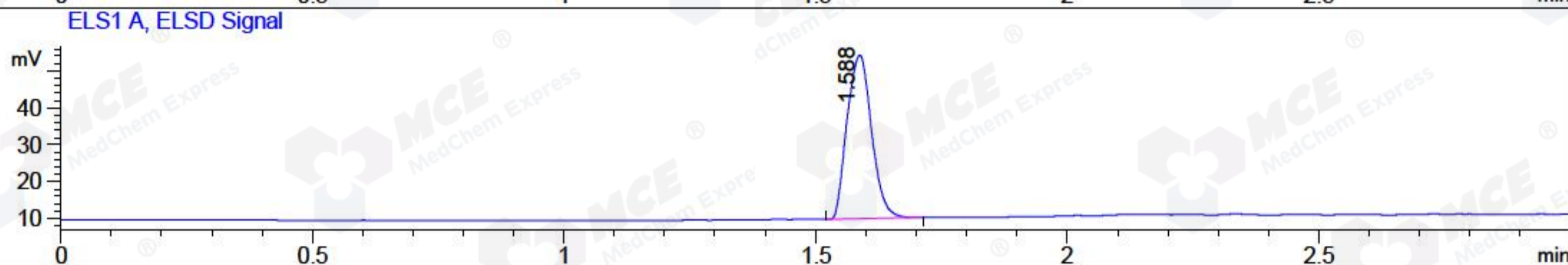
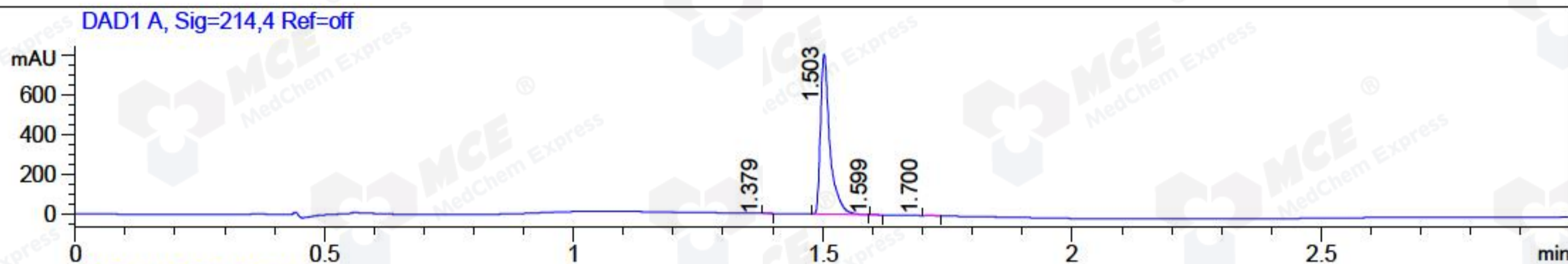


File ..2018\20180515\20180515-2\BIZ2018-515-CXL2.D Tgt Mass (CHM):
 Injection Date : 15 May 18 9:49 pm +0800 Seq. Line : 29
 Sample Name : BIZ2018-515-CXL2 Location : P2-D-11
 Acq. Operator : SYSTEM Inj : 1
 Spec. Reported : MS Integration Inj Volume : 1 ul
 Acq. Method : D:\LCMS03\Data\2018\20180515\20180515-2\1-POS-3MIN.M
 Analysis Method : D:\LCMS03\Data\2018\20180515\20180515-2\1-POS-3MIN.M
 Catalog No : HY-111455 Batch#30166
 Method Info : Mobile Phase: A: water(0.01%TFA) B:ACN(0.01%TFA)
 Gradient: 5% to 95%B within 1.3 min
 Flow Rate :1.8ml/min
 Column :SunFire C18, 4.6*50mm,3.5um A-RP-186
 Oven Temperature : 45C



Integration Results for DAD1 A, Sig=214,4 Ref=off

RetTim	Width	Area	Height	Area%	MS (+)
1.38	0.01	0.55	-0.06	0.05	102
1.50	0.02	1057.75	807.18	99.66	467
1.60	0.02	0.45	0.37	0.04	467
1.70	0.02	2.63	0.23	0.25	102

Integration Results for ELS1 A, ELSD Signal

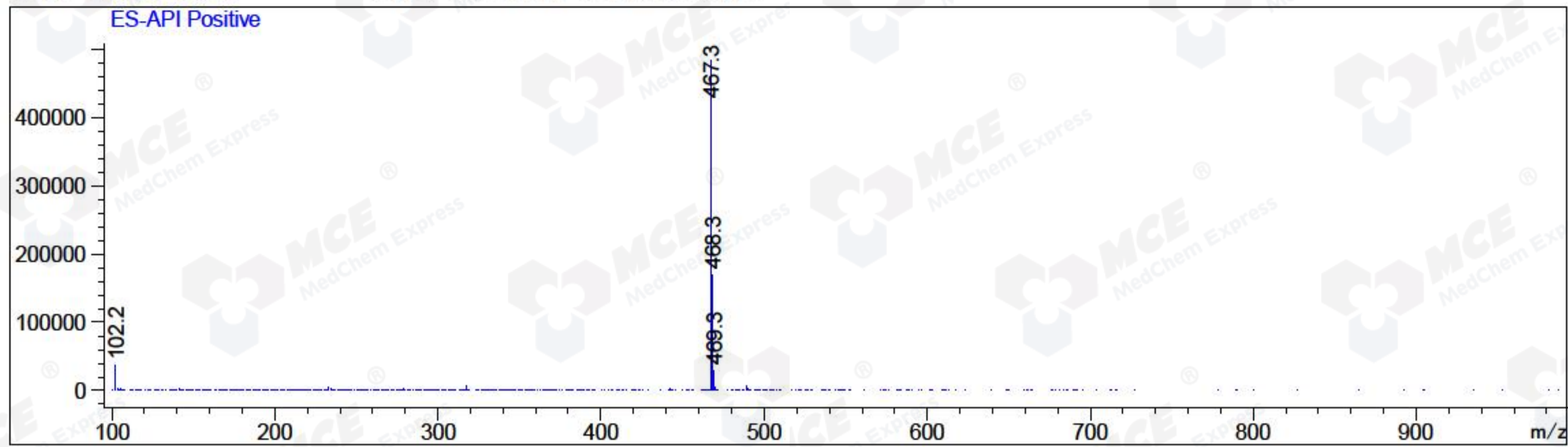
RetTim	Width	Area	Height	Area%	MS (+)
1.59	0.05	150.24	44.42	100.00	467

Integration Results for MSD1 TIC, MS File

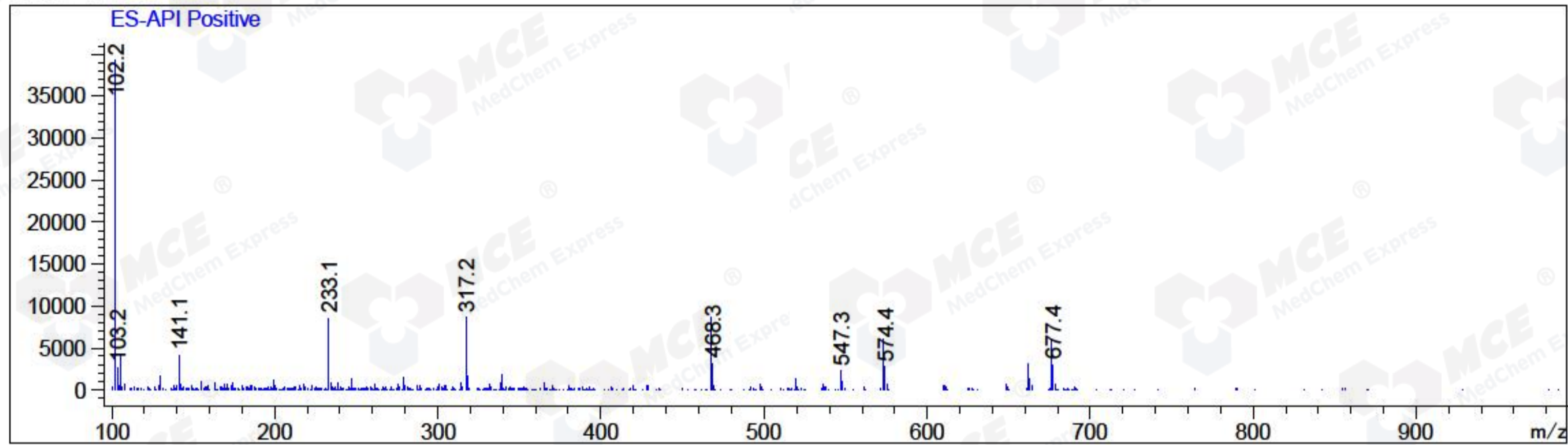
RetTim	Width	Area	Height	Area%	MS (+)
1.54	0.07	9654192.00	2304524.00	98.57	467
1.74	0.06	140301.36	38444.56	1.43	102

Ret. Time: 1.54

<<<< POSITIVE SPECTRA >>>>



Ret. Time: 1.74



*** End of Report ***