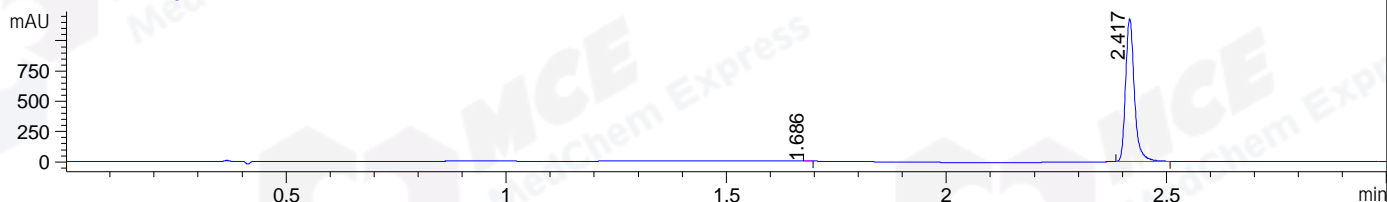
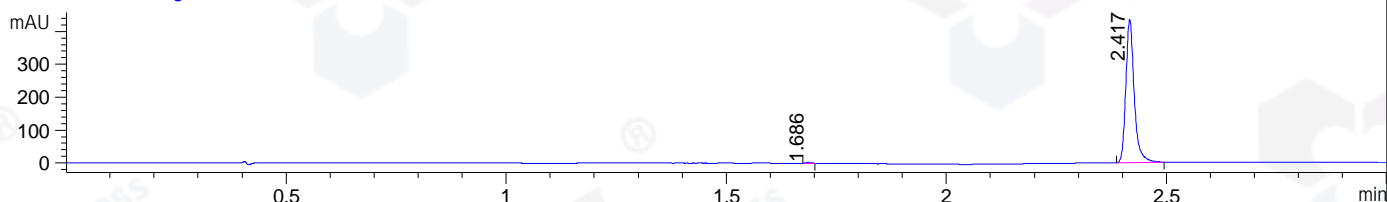


File ..\DATA\2020\20201030\1141\BIZ2020-O29-SCH4.D Tgt Mass (CHM):  
 Injection Date : 30 Oct 20 8:21 pm +0800 Seq. Line : 140  
 Sample Name : BIZ2020-O29-SCH4 Location : P1-D-02  
 Acq. Operator : zyj\_1547 Inj : 1  
 Spec. Reported : MS Integration Inj Volume : 1 ul  
 Acq. Method : D:\Chem32\1\data\2020\20201030\1141\1-POS-3MIN.M  
 Analysis Method : D:\CHEM32\1\DATA\2020\20201030\1141\1-POS-3MIN.M  
 Catalog No : HY-111475  
 Method Info : Mobile Phase: A: water(0.01%TFA) B:ACN(0.01%TFA)  
 Gradient: 5% to 95%B within 1.3 min  
 Flow Rate :1.8ml/min  
 Column :SunFire C18, 4.6\*50mm,3.5um A-RP-698

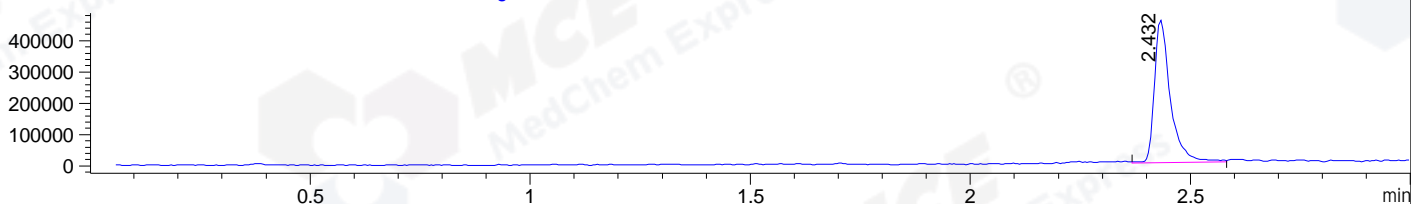
DAD1 B, Sig=214,4 Ref=off



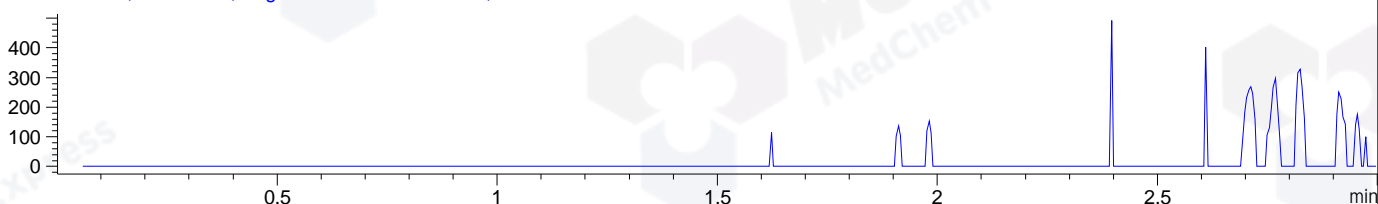
DAD1 C, Sig=254,4 Ref=off



MSD1 TIC, MS File ES-API, Pos, Scan, Frag: 70



Ion 362, MSD1 362, Target Mass 361 +H Positive, EIC=361.7:362.7



Integration Results for DAD1 B, Sig=214,4 Ref=off

| RetTim | Width | Area    | Height  | Area% | MS(+) |
|--------|-------|---------|---------|-------|-------|
| 1.69   | 0.01  | 2.12    | 3.08    | 0.13  | ND    |
| 2.42   | 0.02  | 1645.15 | 1181.25 | 99.87 | 365   |

Integration Results for DAD1 C, Sig=254,4 Ref=off

| RetTim | Width | Area   | Height | Area% | MS(+) |
|--------|-------|--------|--------|-------|-------|
| 1.69   | 0.01  | 1.66   | 2.17   | 0.29  | ND    |
| 2.42   | 0.02  | 576.43 | 435.42 | 99.71 | 365   |

Integration Results for MSD1 TIC, MS File

| RetTim | Width | Area       | Height    | Area%  | MS(+) |
|--------|-------|------------|-----------|--------|-------|
| 2.43   | 0.04  | 1149968.13 | 454931.31 | 100.00 | 365   |

Ret. Time: 2.43

<<<< POSITIVE SPECTRA >>>>

ES-API Positive

