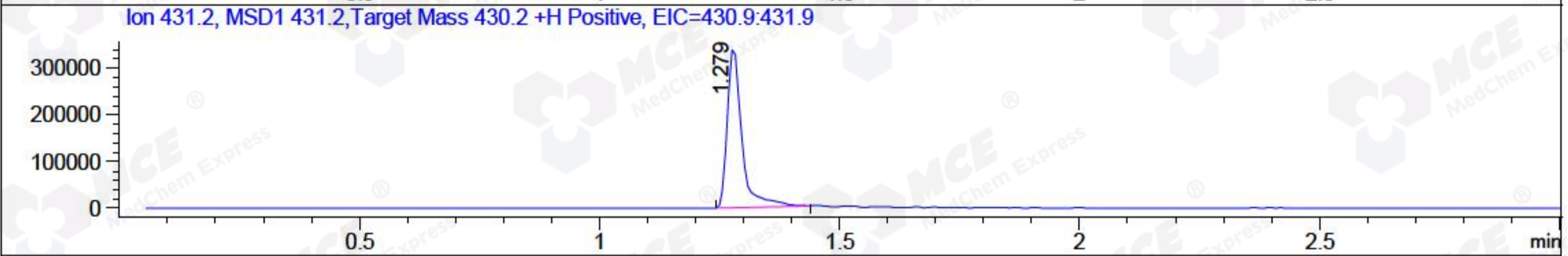
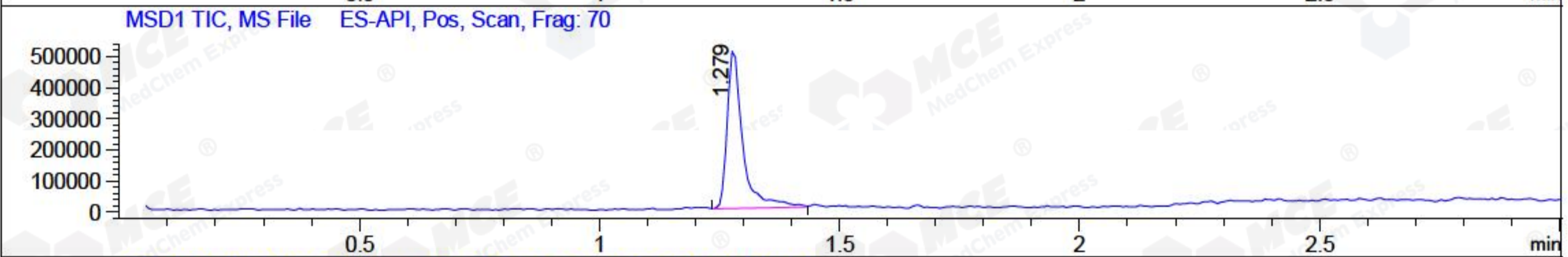
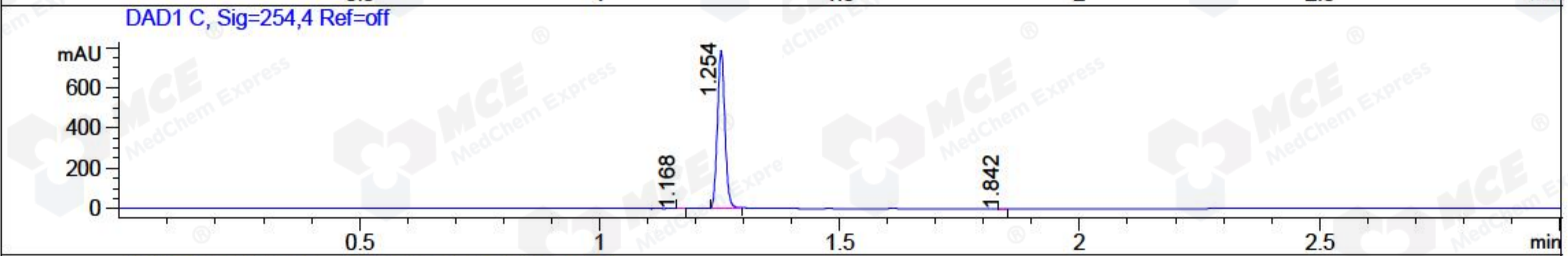
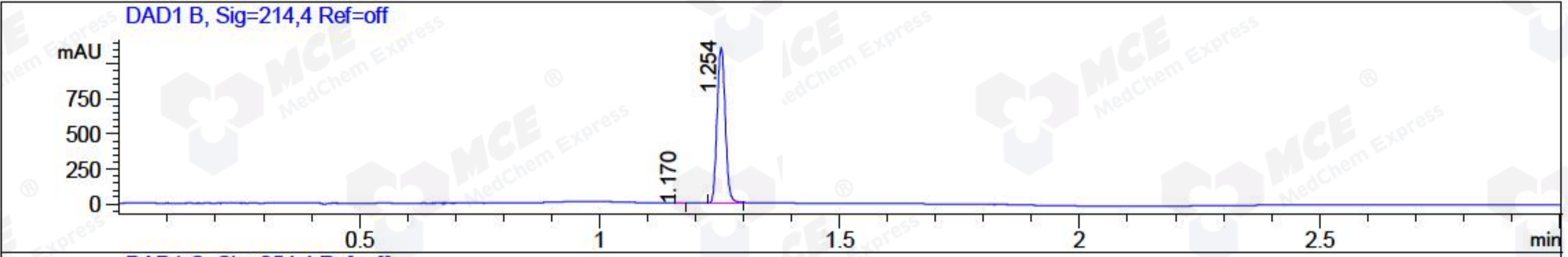


File ..1\DATA\2018\20181127\513\BIZ2018-N27-CXL4.D Tgt Mass (CHM):
 Injection Date : 27 Nov 18 3:38 pm +0800 Seq. Line : 10
 Sample Name : BIZ2018-N27-CXL4 Location : P2-F-05
 Acq. Operator : LQ_1052 Inj : 1
 Spec. Reported : MS Integration Inj Volume : 1 ul
 Acq. Method : D:\Chem32\1\data\2018\20181127\513\1-POS-3MIN-1.M
 Analysis Method : D:\CHEM32\1\DATA\2018\20181127\513\1-POS-3MIN-1.M
 Catalog No : HY-111482 Batch#34686 A-RP-314
 Method Info : Mobile Phase: A: water(0.01%TFA) B:ACN(0.01%TFA)
 Gradient: 5% to 95%B within 1.3 min
 Flow Rate :1.8ml/min
 Column :SunFire C18, 4.6*50mm,3.5um A-RP-314
 Oven Temperature : 45□



Integration Results for DAD1 B, Sig=214,4 Ref=off

RetTim	Width	Area	Height	Area%	MS (+)
1.17	0.01	0.54	0.61	0.04	ND
1.25	0.02	1307.56	1107.93	99.96	431

Integration Results for DAD1 C, Sig=254,4 Ref=off

RetTim	Width	Area	Height	Area%	MS (+)
1.17	0.01	0.16	0.21	0.02	ND
1.25	0.02	846.74	784.80	99.92	431
1.84	0.01	0.48	0.58	0.06	431

Integration Results for MSD1 TIC, MS File

RetTim	Width	Area	Height	Area%	MS (+)
1.28	0.03	1146068.25	514975.16	100.00	431

Ret. Time: 1.28

<<<< POSITIVE SPECTRA >>>>

ES-API Positive

