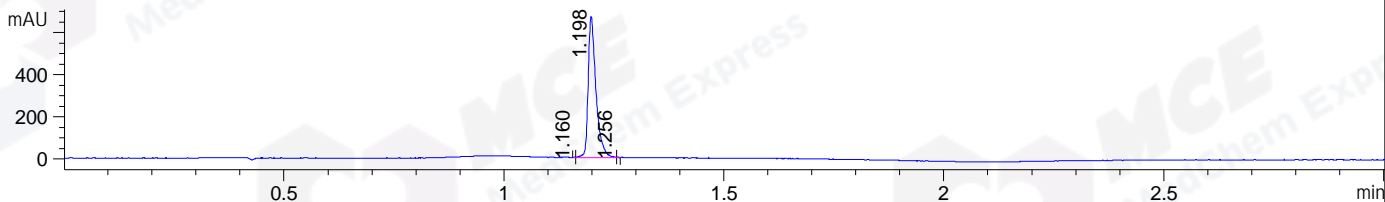
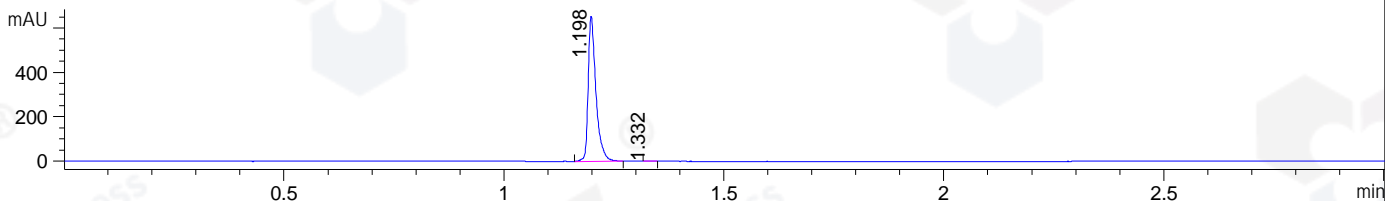


File ..\DATA\2020\20200102\801\BIZ2019-D31-CXL3.D Tgt Mass (CHM):
 Injection Date : 2 Jan 20 1:49 pm +0800 Seq. Line : 61
 Sample Name : BIZ2019-D31-CXL3 Location : P1-A-03
 Acq. Operator : ZJ_1432 Inj : 1
 Spec. Reported : MS Integration Inj Volume : 0.6 ul
 Acq. Method : D:\Chem32\1\data\2020\20200102\801\1-POS-3MIN.M
 Analysis Method : D:\CHEM32\1\DATA\2020\20200102\801\1-POS-3MIN.M
 Catalog No : HY-111507 Batch#58426
 Method Info : Mobile Phase: A: water(0.01%TFA) B:ACN(0.01%TFA)
 Gradient: 5% to 95%B within 1.3 min
 Flow Rate :1.8ml/min
 Column :SunFire C18, 4.6*50mm,3.5um A-RP-433
 Oven Temperature : 45□

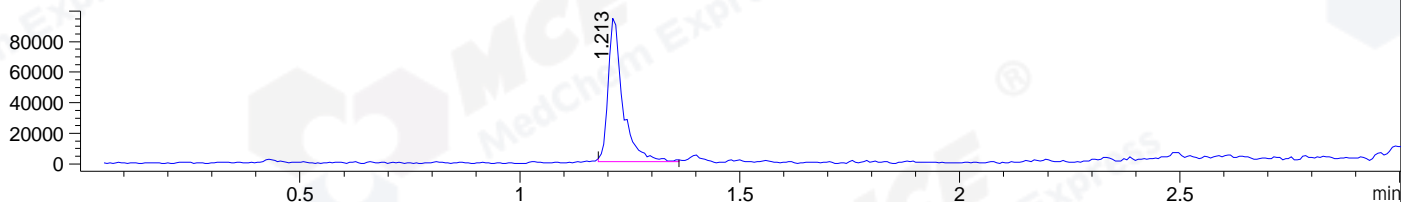
DAD1 B, Sig=214,4 Ref=off



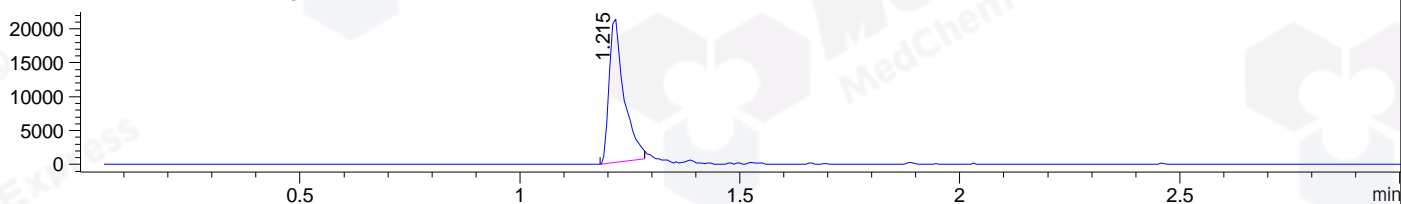
DAD1 C, Sig=254,4 Ref=off



MSD1 TIC, MS File ES-API, Pos, Scan, Frag: 70



Ion 587, MSD1 587, Target Mass 586 +H Positive, EIC=586.7:587.7



Integration Results for DAD1 B, Sig=214,4 Ref=off

RetTim	Width	Area	Height	Area%	MS (+)
1.16	0.01	0.51	1.59	0.06	ND
1.20	0.02	821.64	670.46	99.90	294
1.26	0.00	0.28	1.40	0.03	587

Integration Results for DAD1 C, Sig=254,4 Ref=off

RetTim	Width	Area	Height	Area%	MS (+)
1.20	0.02	802.67	655.72	99.92	294
1.33	0.02	0.61	0.51	0.08	ND

Integration Results for MSD1 TIC, MS File

RetTim	Width	Area	Height	Area%	MS (+)
1.21	0.03	217856.69	95623.73	100.00	294

Ret. Time: 1.21

<<<< POSITIVE SPECTRA >>>>

ES-API Positive

