

File ..1\DATA\2019\20190410\559\BIZ2019-409-CXL5.D Tgt Mass (CHM):

Injection Date : 10 Apr 19 2:11 pm +0800 Seq. Line : 64

Sample Name : BIZ2019-409-CXL5 Location : PL-E-06

Acq. Operator : LQ_1052 Inj : 1

Spec. Reported : MS Integration Inj Volume : 1 ul

Acq. Method : D:\Chem32\1\data\2019\20190410\559\1-POS-3MIN-1.M

Analysis Method : D:\CHEM32\1\DATA\2019\20190410\559\1-POS-3MIN-1.M

Catalog No : HY-111534 Batch#39976

Method Info : Mobile Phase: A: water(0.01%TFA) B:ACN(0.01%TFA)

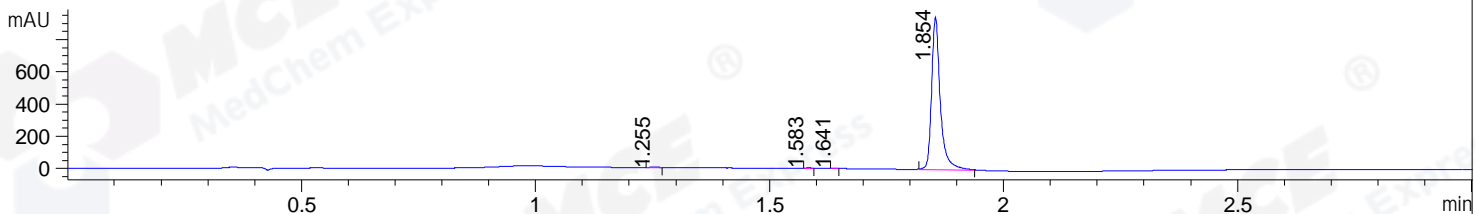
Gradient: 5% to 95%B within 1.3 min

Flow Rate :1.8ml/min

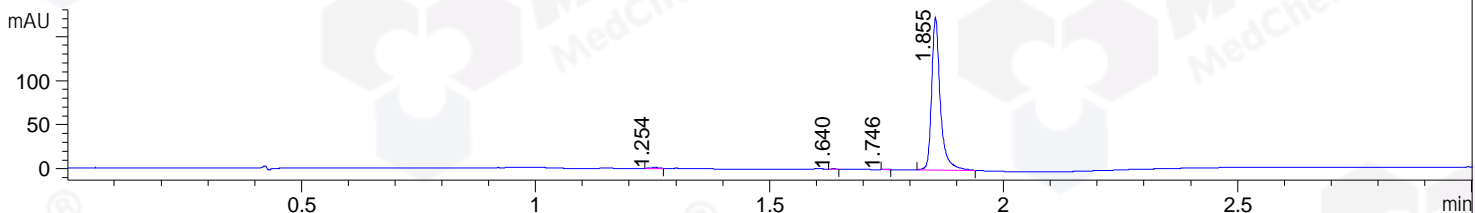
Column :SunFire C18, 4.6*50mm,3.5um A-RP-314

Oven Temperature : 45

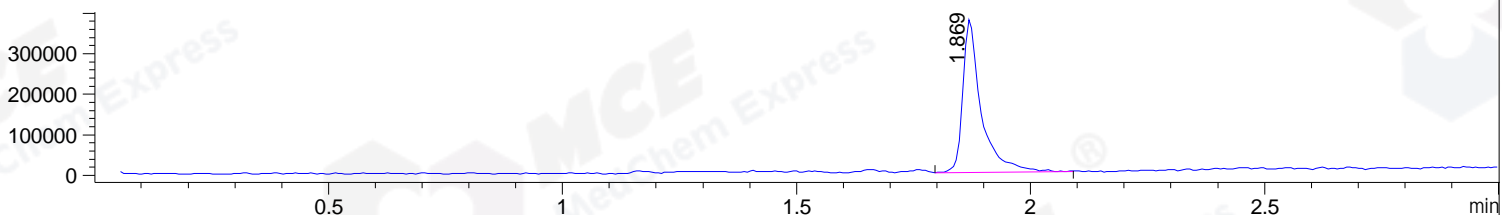
DAD1 B, Sig=214,4 Ref=off



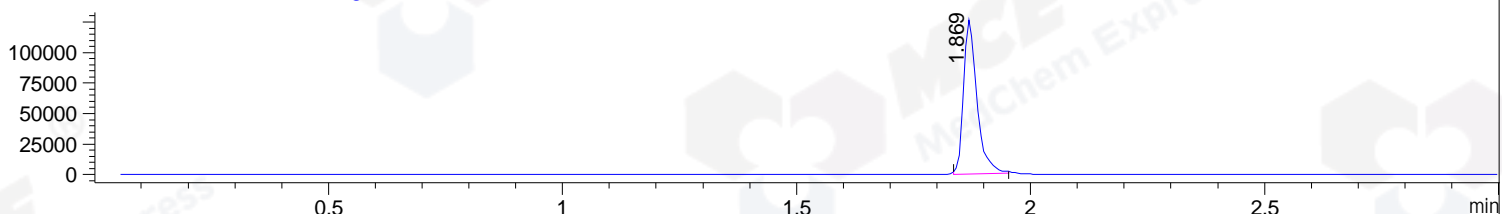
DAD1 C, Sig=254,4 Ref=off



MSD1 TIC, MS File ES-API, Pos, Scan, Frag: 70



Ion 341.1, MSD1 341.1, Target Mass 340.1 +H Positive, EIC=340.8:341.8



Integration Results for DAD1 B, Sig=214,4 Ref=off

RetTim	Width	Area	Height	Area%	MS (+)
1.26	0.02	3.67	3.36	0.30	202
1.58	0.01	1.81	2.20	0.15	ND
1.64	0.01	0.63	0.91	0.05	ND
1.85	0.02	1230.99	947.82	99.51	341

Integration Results for DAD1 C, Sig=254,4 Ref=off

RetTim	Width	Area	Height	Area%	MS (+)
1.25	0.02	1.45	1.21	0.65	362
1.64	0.01	0.31	0.36	0.14	220
1.75	0.01	0.19	0.26	0.09	ND
1.85	0.02	221.87	173.24	99.13	341

Integration Results for MSD1 TIC, MS File

RetTim	Width	Area	Height	Area%	MS (+)
1.87	0.04	1031496.75	378778.81	100.00	341

Ret. Time: 1.87

<<<< POSITIVE SPECTRA >>>>

ES-API Positive

