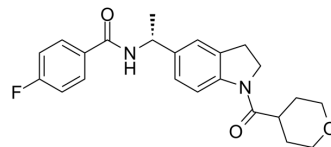


LY-3381916

Cat. No.:	HY-111540		
CAS No.:	2166616-75-5		
Molecular Formula:	C ₂₃ H ₂₅ FN ₂ O ₃		
Molecular Weight:	396.45		
Target:	Indoleamine 2,3-Dioxygenase (IDO)		
Pathway:	Metabolic Enzyme/Protease		
Storage:	Powder	-20°C	3 years
		4°C	2 years
	In solvent	-80°C	2 years
		-20°C	1 year



SOLVENT & SOLUBILITY

In Vitro	DMSO : 300 mg/mL (756.72 mM; Need ultrasonic)			
		Solvent Concentration	Mass	
			1 mg	5 mg
	Preparing Stock Solutions		10 mg	
	1 mM	2.5224 mL	12.6119 mL	25.2239 mL
	5 mM	0.5045 mL	2.5224 mL	5.0448 mL
	10 mM	0.2522 mL	1.2612 mL	2.5224 mL
Please refer to the solubility information to select the appropriate solvent.				
In Vivo	<ol style="list-style-type: none"> Add each solvent one by one: 10% DMSO >> 40% PEG300 >> 5% Tween-80 >> 45% saline Solubility: ≥ 2.5 mg/mL (6.31 mM); Clear solution Add each solvent one by one: 10% DMSO >> 90% (20% SBE-β-CD in saline) Solubility: ≥ 2.5 mg/mL (6.31 mM); Clear solution Add each solvent one by one: 10% DMSO >> 90% corn oil Solubility: ≥ 2.5 mg/mL (6.31 mM); Clear solution 			

BIOLOGICAL ACTIVITY

Description	LY-3381916 (IDO1-IN-5) is a potent, selective and brain penetrated inhibitor of IDO1 activity, binds to apo-IDO1 lacking heme rather than mature heme-bound IDO1 ^[1] .
IC₅₀ & Target	IDO1
In Vitro	LY-3381916 (IDO1-IN-5) (up to 100 μM) shows no obvious agonism of aryl hydrocarbon receptor (AHR) ^[1] . MCE has not independently confirmed the accuracy of these methods. They are for reference only.

CUSTOMER VALIDATION

- Immune Netw. 2020 Oct 19;20(5):e36.
- The University of Auckland. 2023 Mar.

See more customer validations on www.MedChemExpress.com

REFERENCES

[1]. Frank C. Dorsey, et al. Abstract 5245: Identification and characterization of the IDO1 inhibitor LY3381916. Cancer Research. 2018, 78(13).

Caution: Product has not been fully validated for medical applications. For research use only.

Tel: 609-228-6898

Fax: 609-228-5909

E-mail: tech@MedChemExpress.com

Address: 1 Deer Park Dr, Suite Q, Monmouth Junction, NJ 08852, USA