

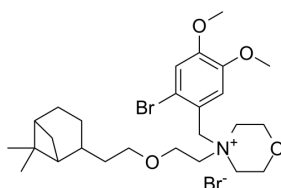
Pinaverium bromide

Cat. No.:	HY-111613
CAS No.:	53251-94-8
Batch No.:	159113
Chemical Name:	Morpholinium, 4-[(2-bromo-4,5-dimethoxyphenyl)methyl]-4-[2-[2-(6,6-dimethylbicyclo[3.1.1]hept-2-yl)ethoxy]ethyl]-, bromide (1:1)

PHYSICAL AND CHEMICAL PROPERTIES

Molecular Formula:	C ₂₆ H ₄₁ Br ₂ NO ₄
Molecular Weight:	591.42
Storage:	-20°C, sealed storage, away from moisture * In solvent : -80°C, 6 months; -20°C, 1 month (sealed storage, away from moisture)

Chemical Structure:



ANALYTICAL DATA

Appearance:	White to off-white (Solid)
¹ H NMR Spectrum:	Consistent with structure
LCMS:	Consistent with structure
Purity (LCMS):	99.83%
Conclusion:	The product has been tested and complies with the given specifications.

Caution: Product has not been fully validated for medical applications. For research use only.

Tel: 609-228-6898

Fax: 609-228-5909

E-mail: tech@MedChemExpress.com

Address: 1 Deer Park Dr, Suite Q, Monmouth Junction, NJ 08852, USA