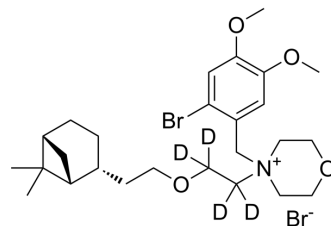


Pinaverium bromide-d₄

Cat. No.:	HY-111613S
Molecular Formula:	C ₂₆ H ₃₇ D ₄ Br ₂ NO ₄
Molecular Weight:	595.44
Target:	Calcium Channel; Isotope-Labeled Compounds
Pathway:	Membrane Transporter/Ion Channel; Neuronal Signaling; Others
Storage:	Please store the product under the recommended conditions in the Certificate of Analysis.



BIOLOGICAL ACTIVITY

Description	Pinaverium bromide-d ₄ is deuterium labeled Pinaverium bromide. Pinaverium bromide is an L-type calcium channel blocker with selectivity for the gastrointestinal tract, effectively relieves pain, diarrhea and intestinal discomfort, provides good therapeutic efficacies without significant adverse effects on Irritable bowel syndrome (IBS) patients[1].
In Vitro	Stable heavy isotopes of hydrogen, carbon, and other elements have been incorporated into drug molecules, largely as tracers for quantitation during the drug development process. Deuteration has gained attention because of its potential to affect the pharmacokinetic and metabolic profiles of drugs ^[1] . MCE has not independently confirmed the accuracy of these methods. They are for reference only.

REFERENCES

- [1]. Dai Y, et al. Effect of pinaverium bromide on stress-induced colonic smooth muscle contractility disorder in rats. *World J Gastroenterol.* 2003 Mar;9(3):557-61.
- [2]. Russak EM, et al. Impact of Deuterium Substitution on the Pharmacokinetics of Pharmaceuticals. *Ann Pharmacother.* 2019;53(2):211-216.

Caution: Product has not been fully validated for medical applications. For research use only.

Tel: 609-228-6898

Fax: 609-228-5909

E-mail: tech@MedChemExpress.com

Address: 1 Deer Park Dr, Suite Q, Monmouth Junction, NJ 08852, USA