

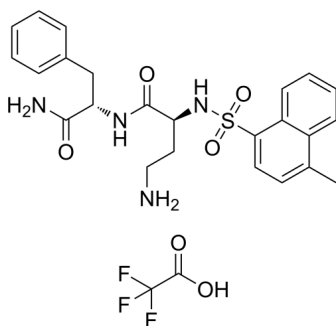
J-2156 (TFA)

Cat. No.: HY-111615A
Batch No.: 98284
CAS No.: 2387505-73-7
Molecular Formula: C₂₆H₂₉F₃N₄O₆S

ANALYTICAL DATA

Theoretical: C(-), H(-), N(-), Peptide Content(≥60.0%)
Result: C(51.63%), H(5.43%), N(9.20%), Peptide Content(76.92%)

Chemical Structure:



Caution: Product has not been fully validated for medical applications. For research use only.

Tel: 609-228-6898

Fax: 609-228-5909

E-mail: tech@MedChemExpress.com

Address: 1 Deer Park Dr, Suite Q, Monmouth Junction, NJ 08852, USA