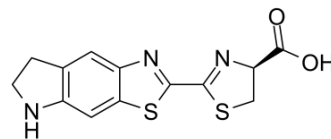


## CycLuc1

Cat. No.:	HY-111653
CAS No.:	1247879-16-8
Molecular Formula:	C <sub>13</sub> H <sub>11</sub> N <sub>3</sub> O <sub>2</sub> S <sub>2</sub>
Molecular Weight:	305.38
Target:	Others
Pathway:	Others
Storage:	4°C, protect from light



### Solvent & Solubility

#### In Vitro

DMSO : ≥ 83.33 mg/mL (272.87 mM)  
 \* "≥" means soluble, but saturation unknown.

Preparing Stock Solutions	Solvent Concentration	Mass		
		1 mg	5 mg	10 mg
	1 mM	3.2746 mL	16.3730 mL	32.7461 mL
	5 mM	0.6549 mL	3.2746 mL	6.5492 mL
	10 mM	0.3275 mL	1.6373 mL	3.2746 mL

Please refer to the solubility information to select the appropriate solvent.

#### In Vivo

- Add each solvent one by one: **10% DMSO >> 40% PEG300 >> 5% Tween-80 >> 45% saline**  
 Solubility: ≥ 2.08 mg/mL (6.81 mM); Clear solution
- Add each solvent one by one: **10% DMSO >> 90% (20% SBE-β-CD in saline)**  
 Solubility: ≥ 2.08 mg/mL (6.81 mM); Clear solution

### BIOLOGICAL ACTIVITY

**Description** CycLuc1 is a brain penetrant luciferase substrate.

**IC<sub>50</sub> & Target** Luciferase<sup>[1]</sup>

### REFERENCES

[1]. Shiv K, et al. Abstract 4112: Synthetic luciferin, CycLuc1, improves bioluminescence imaging for intracranial glioblastoma xenografts. 10.1158/1538-7445.AM2018-4112

---

**Caution: Product has not been fully validated for medical applications. For research use only.**

Tel: 609-228-6898

Fax: 609-228-5909

E-mail: [tech@MedChemExpress.com](mailto:tech@MedChemExpress.com)

Address: 1 Deer Park Dr, Suite Q, Monmouth Junction, NJ 08852, USA