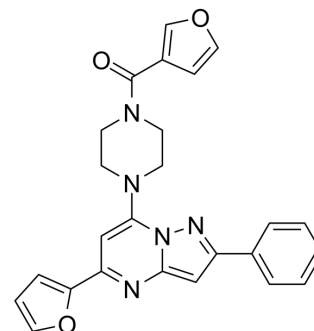


ML230

| | | | |
|--------------------|---|-------|----------|
| Cat. No.: | HY-111678 | | |
| CAS No.: | 1776055-05-0 | | |
| Molecular Formula: | C ₂₅ H ₂₁ N ₅ O ₃ | | |
| Molecular Weight: | 439.47 | | |
| Target: | BCRP | | |
| Pathway: | Membrane Transporter/Ion Channel | | |
| Storage: | Powder | -20°C | 3 years |
| | | 4°C | 2 years |
| | In solvent | -80°C | 6 months |
| | | -20°C | 1 month |



SOLVENT & SOLUBILITY

| | | | | |
|---|---|--------------------------|------------|------------|
| In Vitro | DMSO : 33.33 mg/mL (75.84 mM; Need ultrasonic) | | | |
| | | Solvent Concentration | Mass | |
| | | | 1 mg | 5 mg |
| | | | 10 mg | |
| Preparing Stock Solutions | 1 mM | 2.2755 mL | 11.3773 mL | 22.7547 mL |
| | 5 mM | 0.4551 mL | 2.2755 mL | 4.5509 mL |
| | 10 mM | 0.2275 mL | 1.1377 mL | 2.2755 mL |
| Please refer to the solubility information to select the appropriate solvent. | | | | |
| In Vivo | 1. Add each solvent one by one: 10% DMSO >> 90% corn oil Solubility: ≥ 2.5 mg/mL (5.69 mM); Clear solution | | | |

BIOLOGICAL ACTIVITY

| | |
|---------------------------|---|
| Description | ML230 (CID44640177; SID 88095709) is a selective inhibitor of ATP-binding cassette (ABC) transporter ABCG2, and 36-fold selective for ABCG2 over ABCB1 with EC ₅₀ s values of 0.13 μM and 4.65 μM, respectively ^[1] . |
| IC ₅₀ & Target | EC50: ABCG2 (0.13 μM) ^[1] |

REFERENCES

[1]. Strouse JJ, et al. Selective Efflux Inhibition of ATP-binding Cassette Sub-family G Member 2. Probe Reports from the NIH Molecular Libraries Program. November 30, 2010.

Caution: Product has not been fully validated for medical applications. For research use only.

Tel: 609-228-6898

Fax: 609-228-5909

E-mail: tech@MedChemExpress.com

Address: 1 Deer Park Dr, Suite Q, Monmouth Junction, NJ 08852, USA