

File ..200806 2020-08-06 08-41-43\ZH8125-004-1_1.D Tgt Mass (CHM):

Injection Date : 6 Aug 20 2:06 pm +0800 Seq. Line : 72

Sample Name : ZH8125-004-1 Location : PL-C-11

Acq. Operator : SYSTEM Inj : 1

Spec. Reported : MS Integration Inj Volume : 0.6 ul

Acq. Method : D:\LCMS03\Data\20200806\20200806 2020-08-06 08-41-43\1-POS-UPLC2.0MIN(0.8ML)

Analysis Method : D:\LCMS03\Data\20200806\20200806 2020-08-06 08-41-43\1-POS-UPLC2.0MIN(0.8ML)

Catalog No : HY-111870

Method Info : Mobile Phase: A: water(0.01%TFA) B:ACN(0.01%TFA)

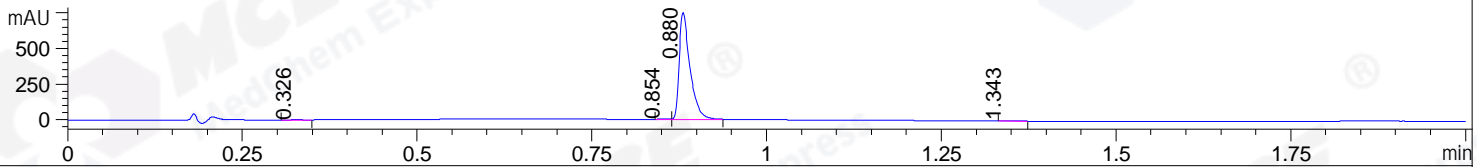
Gradient: 5% to 95%B within 0.6 min

Flow Rate :0.8ml/min

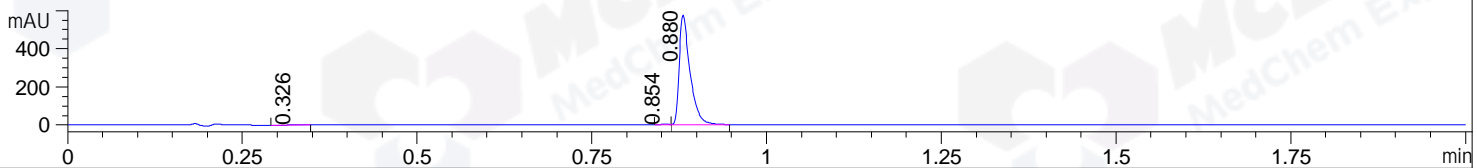
Column :Poroshell 120 EC- C18, 2.1*50mm,1.9um A-RP-463

Oven Temperature : 45C

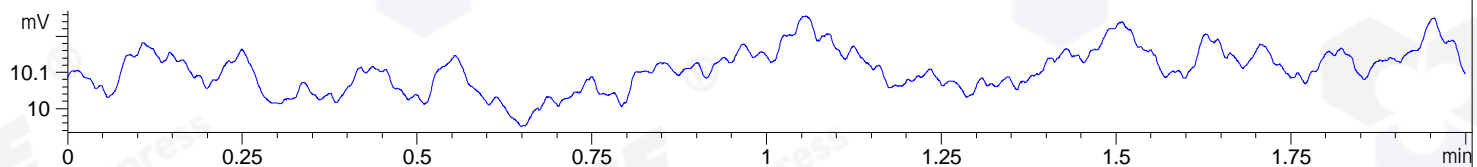
DAD1 A, Sig=214,4 Ref=off



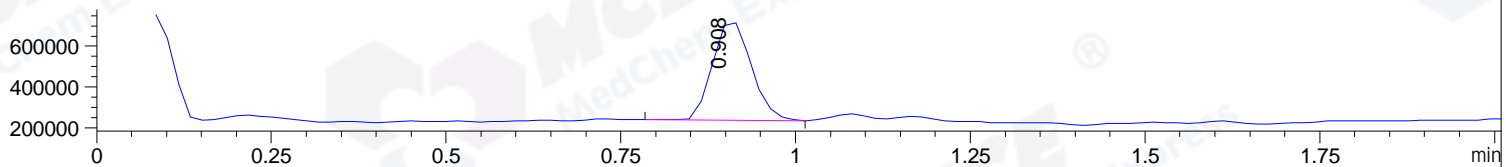
DAD1 B, Sig=254,4 Ref=off



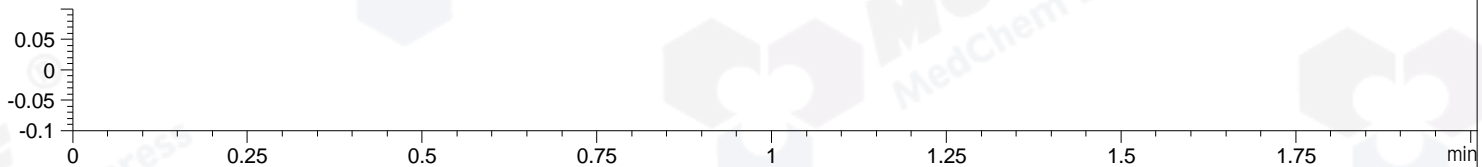
ELS1 A, ELSD Signal



MSD1 TIC, MS File ES-API, Pos, Scan, Frag: 70



Ion 1, MSD1 1, Target Mass 0 +H Positive, EIC=0.7:1.7



Integration Results for DAD1 A, Sig=214,4 Ref=off

RetTim	Width	Area	Height	Area%	MS (+)
0.33	0.03	2.08	1.39	0.26	161
0.85	0.02	2.90	3.05	0.36	161
0.88	0.02	802.52	752.57	99.32	161
1.34	0.01	0.53	0.54	0.07	161

Integration Results for DAD1 B, Sig=254,4 Ref=off

RetTim	Width	Area	Height	Area%	MS (+)
0.33	0.02	0.55	0.38	0.09	161
0.85	0.02	2.48	2.72	0.40	161
0.88	0.02	618.24	576.09	99.51	161

Integration Results for ELS1 A, ELSD Signal

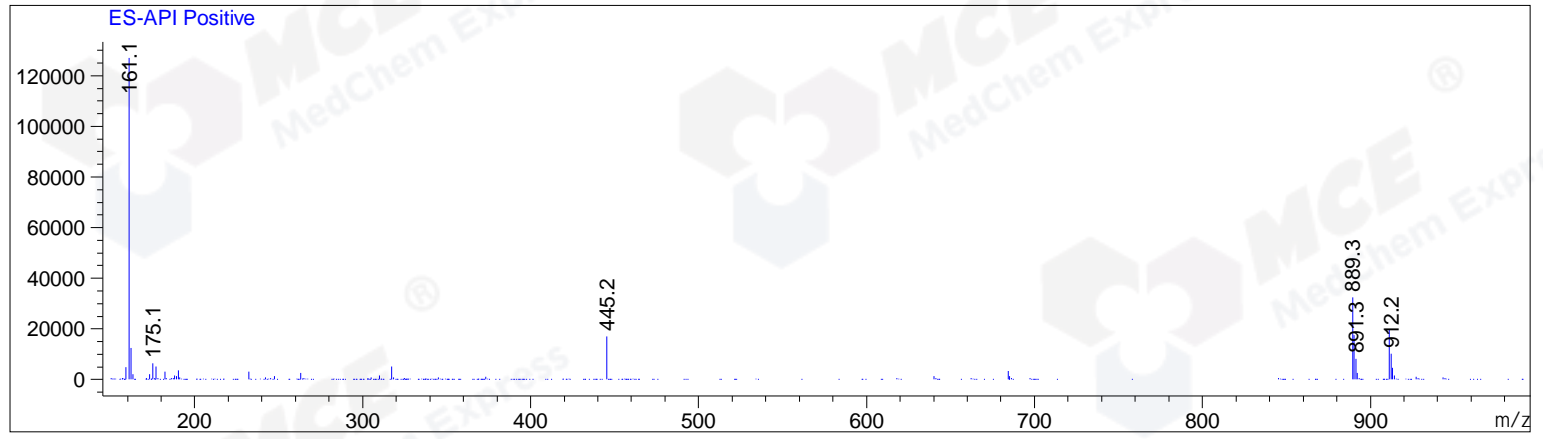
RetTim	Width	Area	Height	Area%	MS (+)
--------	-------	------	--------	-------	--------

Integration Results for MSD1 TIC, MS File

RetTim	Width	Area	Height	Area%	MS (+)
0.91	0.06	1872531.75	490234.47	100.00	161

Ret. Time: 0.91

<<<< POSITIVE SPECTRA >>>>



*** End of Report ***