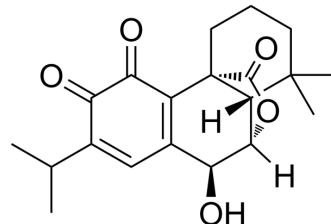


Rosmaquinone

Cat. No.:	HY-111900
CAS No.:	121927-71-7
Molecular Formula:	C ₂₀ H ₂₄ O ₅
Molecular Weight:	344.4
Target:	Others
Pathway:	Others
Storage:	Please store the product under the recommended conditions in the Certificate of Analysis.



BIOLOGICAL ACTIVITY

Description

Rosmaquinone is an aromatic diterpene that can be found in the genus *Salvia*^[1].

REFERENCES

[1]. Marrero JG, et, al. Semisynthesis of rosmanol and its derivatives. Easy access to abietatriene diterpenes isolated from the genus *Salvia* with biological activities. *J Nat Prod.* 2002 Jul;65(7):986-9.

Caution: Product has not been fully validated for medical applications. For research use only.

Tel: 609-228-6898

Fax: 609-228-5909

E-mail: tech@MedChemExpress.com

Address: 1 Deer Park Dr, Suite Q, Monmouth Junction, NJ 08852, USA