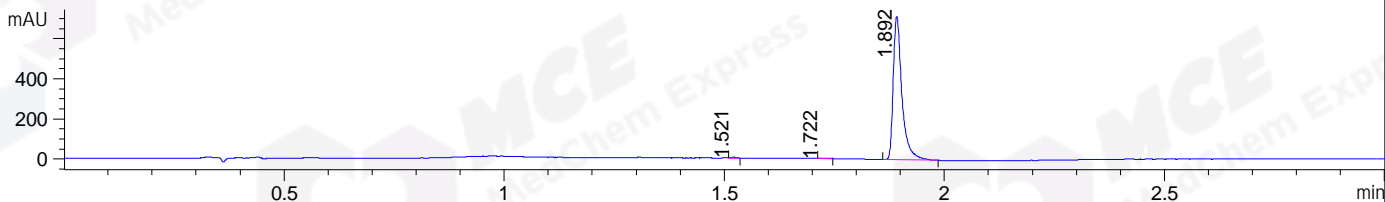
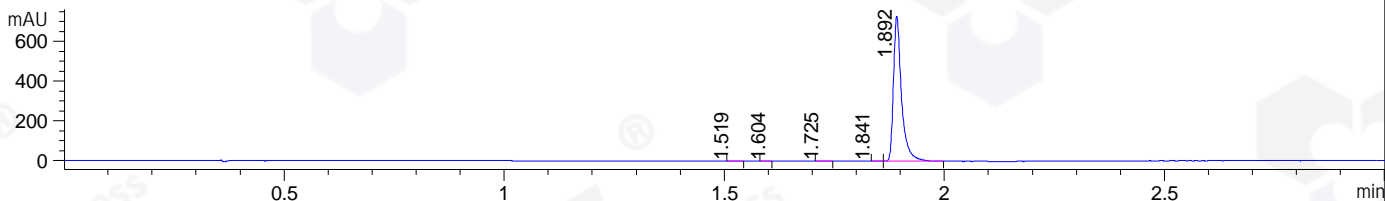


File ..1\DATA\2020\20200121\832\BIZ2020-119-CXL3.D Tgt Mass (CHM):
Injection Date : 21 Jan 20 10:10 am +0800 Seq. Line : 15
Sample Name : BIZ2020-119-CXL3 Location : P1-A-03
Acq. Operator : ZJ_1432 Inj : 1
Spec. Reported : MS Integration Inj Volume : 1 ul
Acq. Method : D:\Chem32\1\data\2020\20200121\832\1-POS-3MIN.M
Analysis Method : D:\CHEM32\1\DATA\2020\20200121\832\1-POS-3MIN.M
Catalog No : HY-111930 Batch# 59275
Method Info : Mobile Phase: A: water(0.01%TFA) B:ACN(0.01%TFA)
Gradient: 5% to 95%B within 1.3 min
Flow Rate :1.8ml/min
Column :SunFire C18, 4.6*50mm,3.5um A-RP-433
Oven Temperature : 45

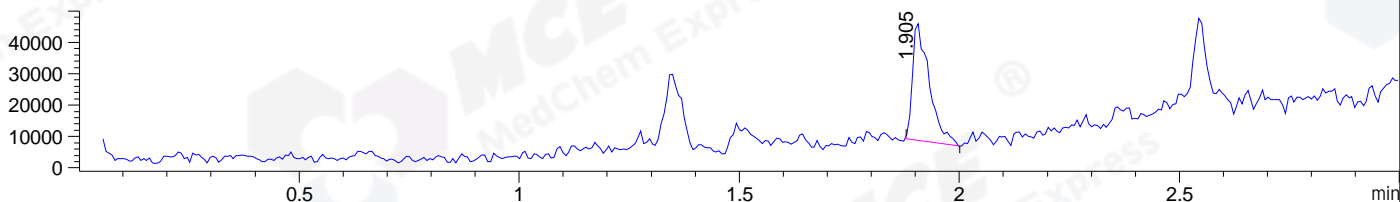
DAD1 B, Sig=214,4 Ref=off



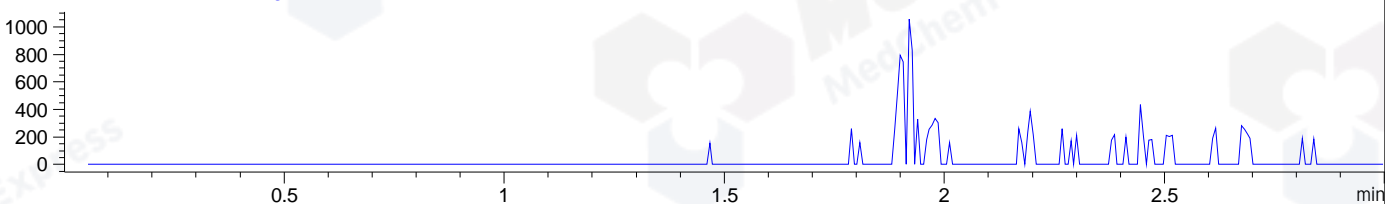
DAD1 C, Sig=254,4 Ref=off



MSD1 TIC, MS File ES-API, Pos, Scan, Frag: 70



Ion 403, MSD1 403, Target Mass 402 +H Positive, EIC=402.7:403.7



Integration Results for DAD1 B, Sig=214,4 Ref=off

RetTim	Width	Area	Height	Area%	MS (+)
1.52	0.01	3.00	3.91	0.30	472
1.72	0.02	2.00	1.87	0.20	ND
1.89	0.02	987.63	715.43	99.50	404

Integration Results for DAD1 C, Sig=254,4 Ref=off

RetTim	Width	Area	Height	Area%	MS (+)
1.52	0.01	1.34	1.51	0.14	ND
1.60	0.02	0.61	0.64	0.06	ND
1.73	0.02	1.10	1.09	0.12	ND
1.84	0.02	0.80	0.70	0.09	ND
1.89	0.02	935.80	731.20	99.59	404

Integration Results for MSD1 TIC, MS File

RetTim	Width	Area	Height	Area%	MS (+)
1.90	0.04	98892.90	37573.84	100.00	404

Ret. Time: 1.90

<<<< POSITIVE SPECTRA >>>>

ES-API Positive

