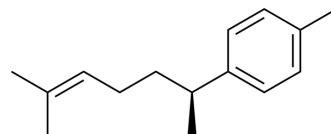


## (S)-ar-Curcumene

Cat. No.:	HY-112006
CAS No.:	4176-06-1
Molecular Formula:	C <sub>15</sub> H <sub>22</sub>
Molecular Weight:	202.34
Target:	Others
Pathway:	Others
Storage:	Please store the product under the recommended conditions in the Certificate of Analysis.



### BIOLOGICAL ACTIVITY

#### Description

(S)-ar-Curcumene ((+)-alpha-Curcumene) is a natural compound. (S)-ar-Curcumene is a constituent of the essential oil that can be isolated from the rhizomes of *Curcuma aromatica* and is an odour component of distantly related corals<sup>[1]</sup>.

### REFERENCES

[1]. Ortiz A, et al. A Natural Curcumene Bisabolane Sesquiterpene: Syntheses and Recent Applications[J]. *Current Organic Synthesis*, 2015, 12(4).

**Caution: Product has not been fully validated for medical applications. For research use only.**

Tel: 609-228-6898

Fax: 609-228-5909

E-mail: tech@MedChemExpress.com

Address: 1 Deer Park Dr, Suite Q, Monmouth Junction, NJ 08852, USA