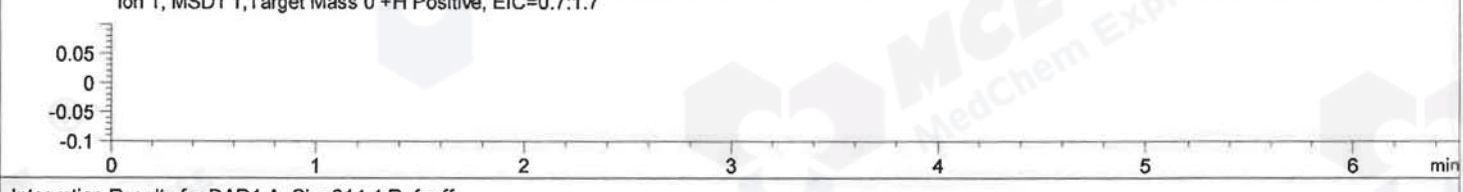
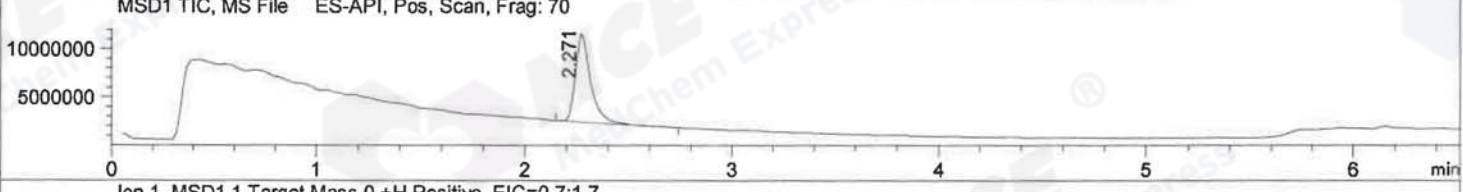
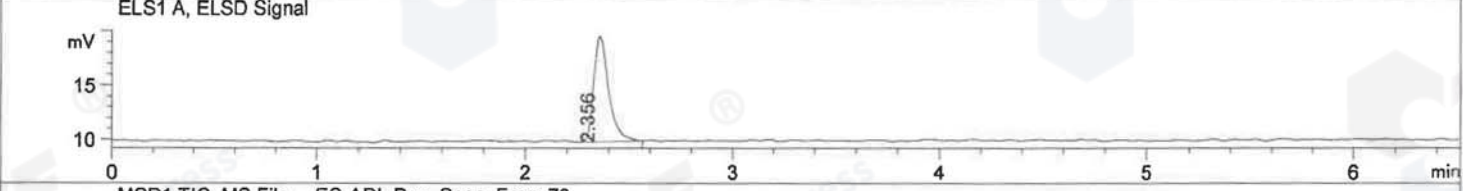
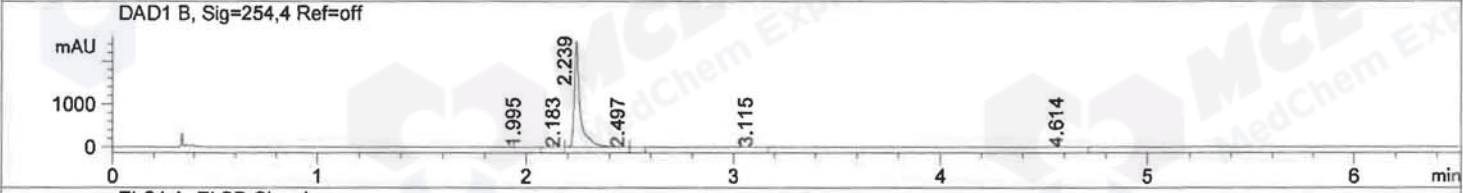
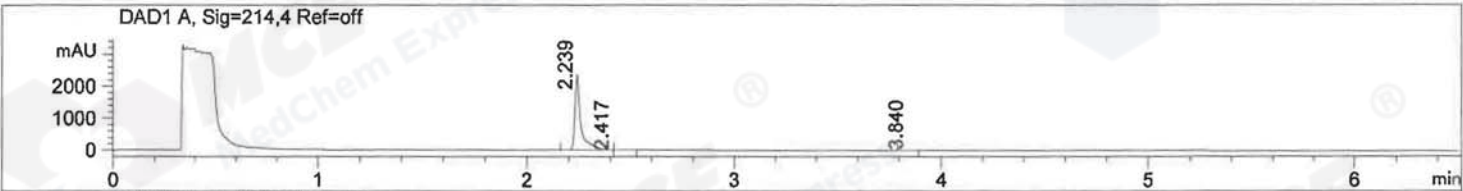


File ..MS03\Data\20190415\20190415\LSJ6433-053-1.D Tgt Mass (CHM):  
 Injection Date : 15 Apr 19 12:05 pm +0800 Seq. Line : 41  
 Sample Name : LSJ6433-053-1 Location : P1-D-07  
 Acq. Operator : SYSTEM Inj : 1  
 Spec. Reported : MS Integration Inj Volume : 5 ul  
 Acq. Method : D:\LCMS03\Data\20190415\20190415\1-POS-7MIN.M  
 Analysis Method : D:\LCMS03\Data\20190415\20190415\1-POS-7MIN.M  
 Catalog No : HY-112082 Batch#39982  
 Method Info : Mobile Phase: A: water(0.01%TFA) B:ACN(0.01%TFA)  
 Gradient: 5% to 95%B within 5 min  
 Flow Rate :1.8ml/min  
 Column :SunFire C18, 4.6\*50mm,3.5um A-RP-392  
 Oven Temperature : 45C



Integration Results for DAD1 A, Sig=214,4 Ref=off

RetTim	Width	Area	Height	Area%	MS(+)
2.24	0.03	4743.55	2366.84	99.59	516
2.42	0.03	15.76	7.53	0.33	157
3.84	0.04	3.78	1.55	0.08	157

Integration Results for DAD1 B, Sig=254,4 Ref=off

RetTim	Width	Area	Height	Area%	MS(+)
1.99	0.03	0.94	0.40	0.02	157
2.18	0.04	1.51	0.63	0.03	157
2.24	0.03	4884.93	2474.49	99.74	516
2.50	0.04	1.63	0.74	0.03	157
3.12	0.03	1.69	0.75	0.03	157
4.61	0.03	6.92	3.48	0.14	114

Integration Results for ELS1 A, ELSD Signal

RetTim	Width	Area	Height	Area%	MS(+)

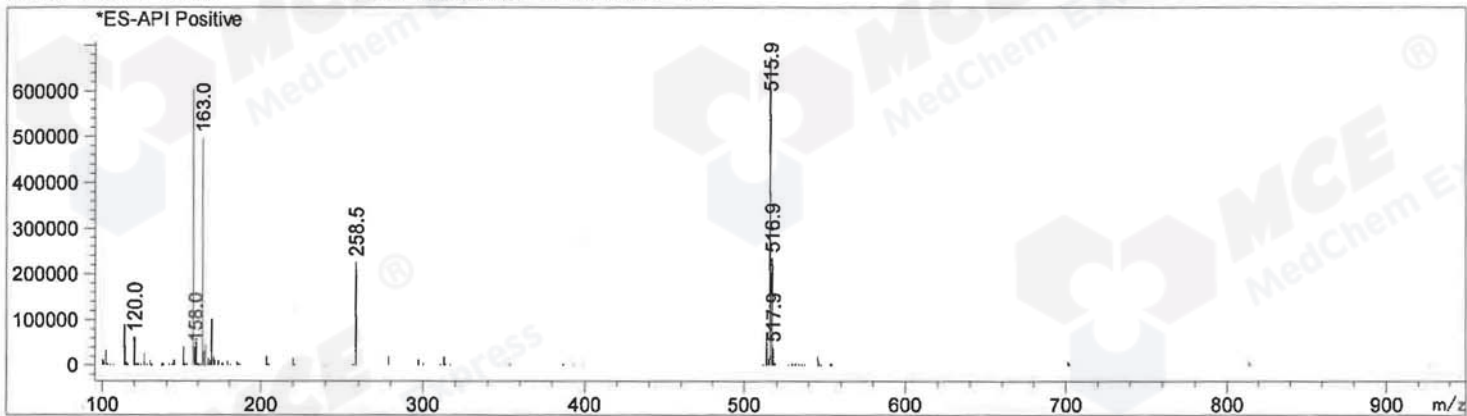
2.36 0.07 48.38 9.74 100.00 516

## Integration Results for MSD1 TIC, MS File

RetTime	Width	Area	Height	Area%	MS(+)
2.27	0.08	48192092.00	9342897.00	100.00	516

Ret. Time: 2.27

<<<< POSITIVE SPECTRA >>>>



\*\*\* End of Report \*\*\*