

File ..1\DATA\2019\20190214\550\BIZ2019-214-CXL6.D Tgt Mass (CHM):

Injection Date : 14 Feb 19 5:25 pm +0800 Seq. Line : 13

Sample Name : BIZ2019-214-CXL6 Location : P1-B-03

Acq. Operator : LQ_1052 Inj : 1

Spec. Reported : MS Integration Inj Volume : 1 ul

Acq. Method : D:\Chem32\1\data\2019\20190214\550\1-POS-3MIN-1.M

Analysis Method : D:\CHEM32\1\DATA\2019\20190214\550\1-POS-3MIN-1.M

Catalog No : HY-112130 Batch#37485

Method Info : Mobile Phase: A: water(0.01%TFA) B:ACN(0.01%TFA)

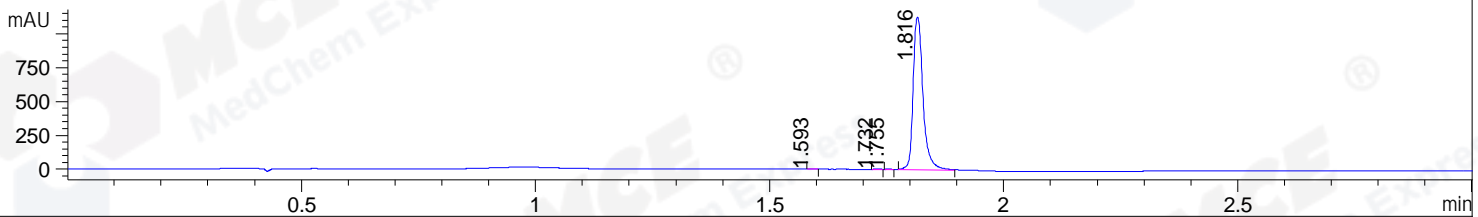
Gradient: 5% to 95%B within 1.3 min

Flow Rate :1.8ml/min

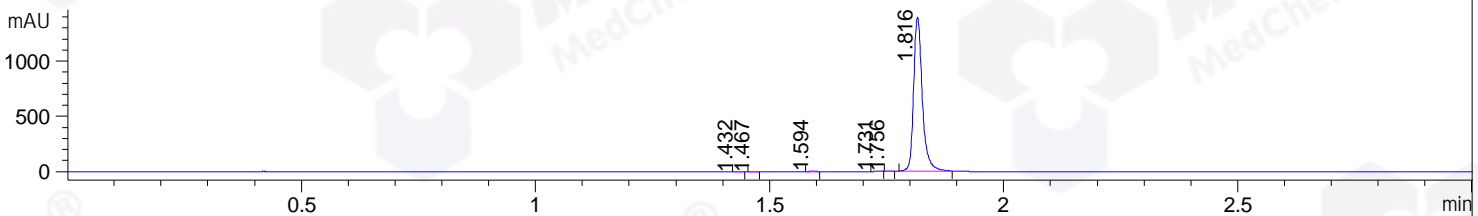
Column :SunFire C18, 4.6*50mm,3.5um A-RP-314

Oven Temperature : 45

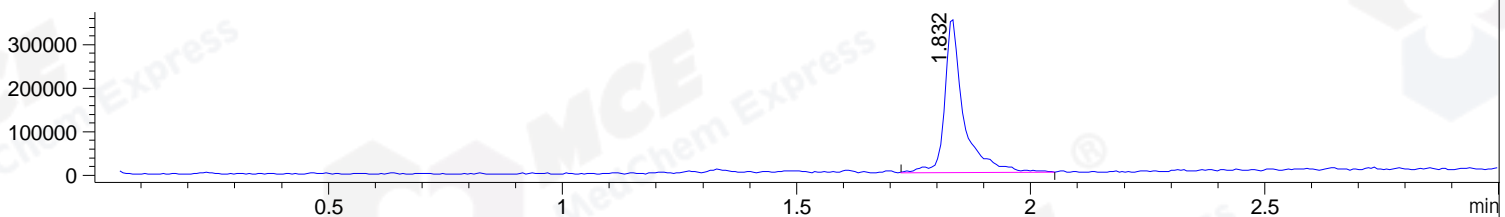
DAD1 B, Sig=214,4 Ref=off



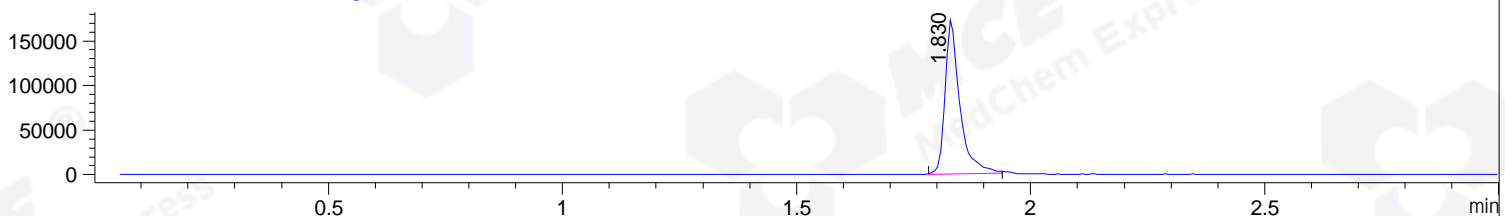
DAD1 C, Sig=254,4 Ref=off



MSD1 TIC, MS File ES-API, Pos, Scan, Frag: 70



Ion 401.2, MSD1 401.2, Target Mass 400.2 +H Positive, EIC=400.9:401.9



Integration Results for DAD1 B, Sig=214,4 Ref=off

RetTim	Width	Area	Height	Area%	MS (+)
1.59	0.02	1.59	1.77	0.10	ND
1.73	0.01	1.88	2.15	0.11	ND
1.75	0.01	1.22	1.55	0.07	ND
1.82	0.02	1644.74	1127.70	99.72	401

Integration Results for DAD1 C, Sig=254,4 Ref=off

RetTim	Width	Area	Height	Area%	MS (+)
1.43	0.01	0.72	0.88	0.04	ND
1.47	0.02	0.48	0.51	0.03	251
1.59	0.02	1.76	1.74	0.10	ND
1.73	0.01	1.89	2.24	0.10	ND
1.76	0.01	1.03	1.40	0.06	309
1.82	0.02	1816.48	1396.51	99.68	401

Integration Results for MSD1 TIC, MS File

RetTim	Width	Area	Height	Area%	MS (+)
--------	-------	------	--------	-------	--------

1.83 0.04 1004174.56 358237.34 100.00 401

Ret. Time: 1.83

<<<< POSITIVE SPECTRA >>>>

ES-API Positive

