

File ..a\2018\20180509\20180509\BIZ2018-509-CXL1.D Tgt Mass (CHM):

Injection Date : 9 May 18 8:03 pm +0800 Seq. Line : 135

Sample Name : BIZ2018-509-CXL1 Location : P2-C-06

Acq. Operator : SYSTEM Inj : 1

Spec. Reported : MS Integration Inj Volume : 1 ul

Acq. Method : D:\LCMS03\Data\2018\20180509\20180509\1-POS-3MIN.M

Analysis Method : D:\LCMS03\Data\2018\20180509\20180509\1-POS-3MIN.M

Catalog No : HY-112142 Batch#30075

Method Info : Mobile Phase: A: water(0.01%TFA) B:ACN(0.01%TFA)

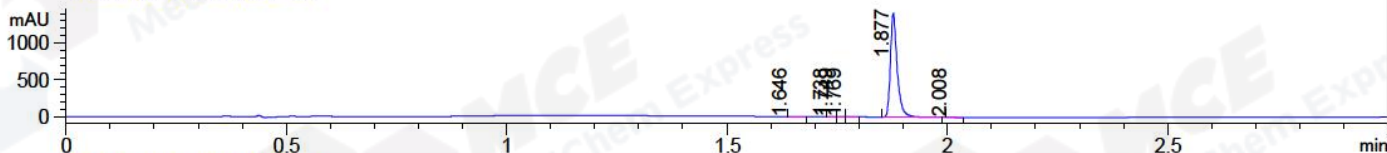
Gradient: 5% to 95%B within 1.3 min

Flow Rate :1.8ml/min

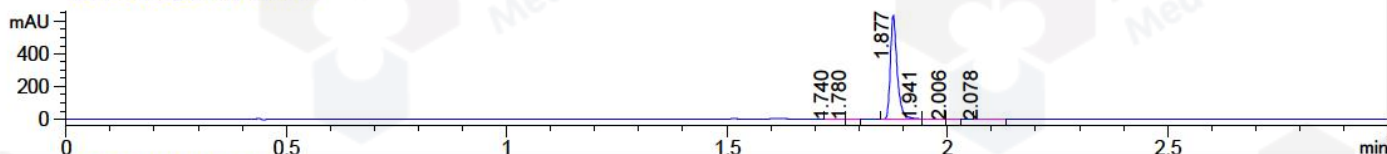
Column :SunFire C18, 4.6*50mm,3.5um A-RP-186

Oven Temperature : 45C

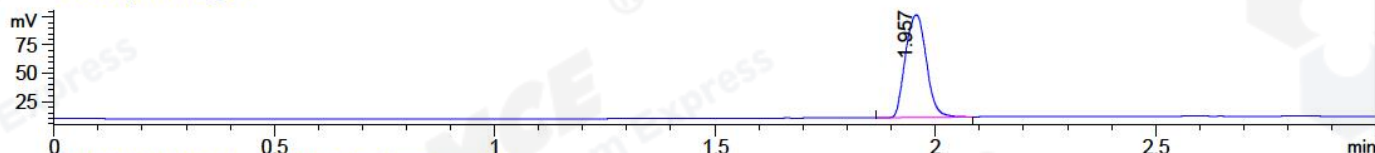
DAD1 A, Sig=214,4 Ref=off



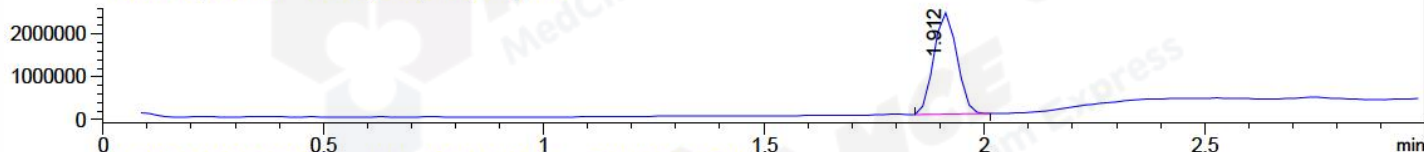
DAD1 B, Sig=254,4 Ref=off



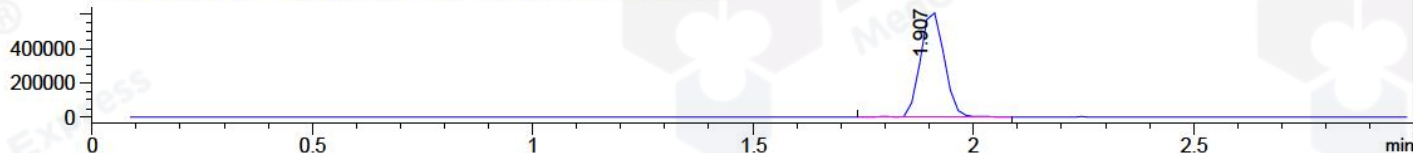
ELS1 A, ELSD Signal



MSD1 TIC, MS File ES-API, Pos, Scan, Frag: 70



Ion 387.1, MSD1 387.1, Target Mass 386.1 +H Positive, EIC=386.8:387.8



Integration Results for DAD1 A, Sig=214,4 Ref=off

RetTim	Width	Area	Height	Area%	MS (+)
1.65	0.01	0.44	0.45	0.03	233
1.74	0.01	1.67	2.05	0.11	233
1.75	0.01	0.42	0.60	0.03	233
1.77	0.02	2.50	0.06	0.17	233
1.88	0.02	1507.69	1398.20	99.60	387
2.01	0.02	1.00	0.91	0.07	233

Integration Results for DAD1 B, Sig=254,4 Ref=off

RetTim	Width	Area	Height	Area%	MS (+)
1.74	0.02	0.30	0.19	0.04	233
1.78	0.02	0.37	0.38	0.05	233
1.88	0.02	679.15	633.35	99.55	387
1.94	0.01	1.50	1.68	0.22	795
2.01	0.02	0.33	0.27	0.05	233
2.08	0.03	0.56	0.27	0.08	233

Integration Results for ELS1 A, ELSD Signal

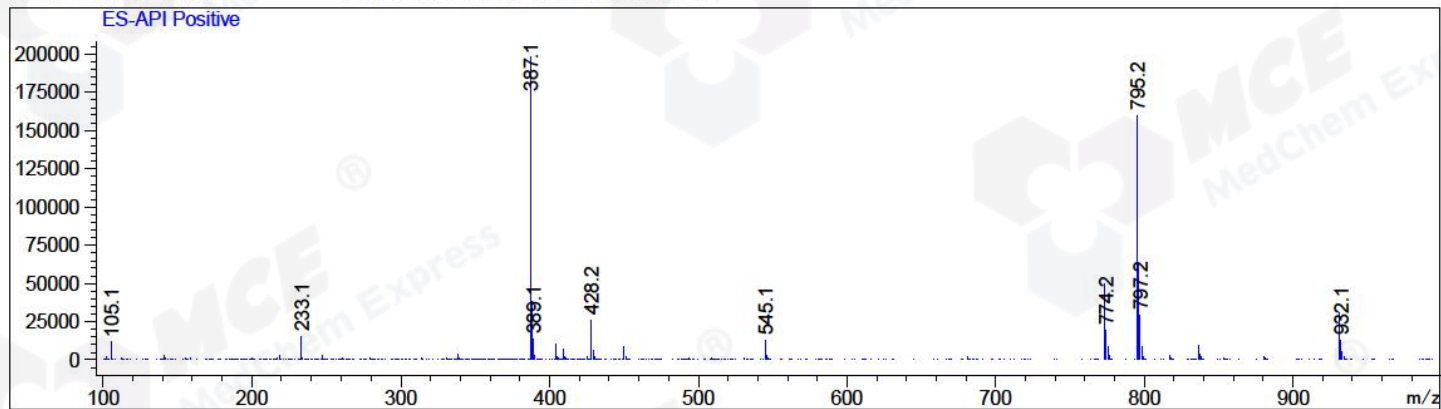
RetTim	Width	Area	Height	Area%	MS (+)
1.96	0.05	300.66	91.16	100.00	387

Integration Results for MSD1 TIC, MS File

RetTim	Width	Area	Height	Area%	MS (+)
1.91	0.06	8723790.00	2381884.50	100.00	387

Ret. Time: 1.91

<<<< POSITIVE SPECTRA >>>>



*** End of Report ***