

File ..1\DATA\2018\20180625\278\BIZ2018-622-WYQ2.D Tgt Mass (CHM):

Injection Date : 25 Jun 18 5:22 pm +0800 Seq. Line : 3

Sample Name : BIZ2018-622-WYQ2 Location : P1-D-01

Acq. Operator : LQ_1052 Inj : 1

Spec. Reported : MS Integration Inj Volume : 3 ul

Acq. Method : D:\Chem32\1\data\2018\20180625\278\1-POS-3MIN-1.M

Analysis Method : D:\CHEM32\1\DATA\2018\20180625\278\1-POS-3MIN-1.M

Catalog No : HY-112173 Batch#31097 A-RP-314

Method Info : Mobile Phase: A: water(0.01%TFA) B:ACN(0.01%TFA)

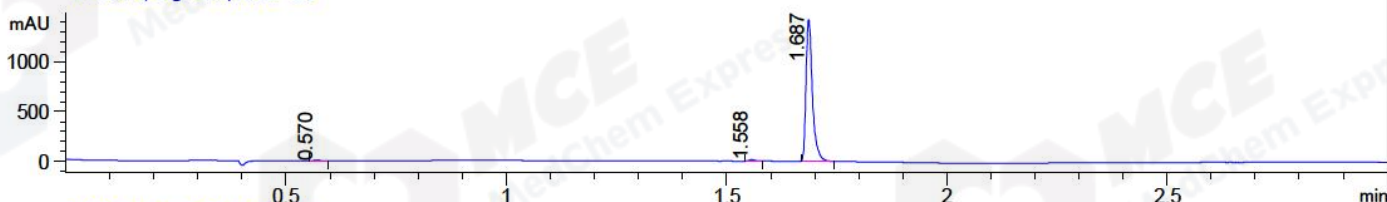
Gradient: 5% to 95%B within 1.3 min

Flow Rate :1.8ml/min

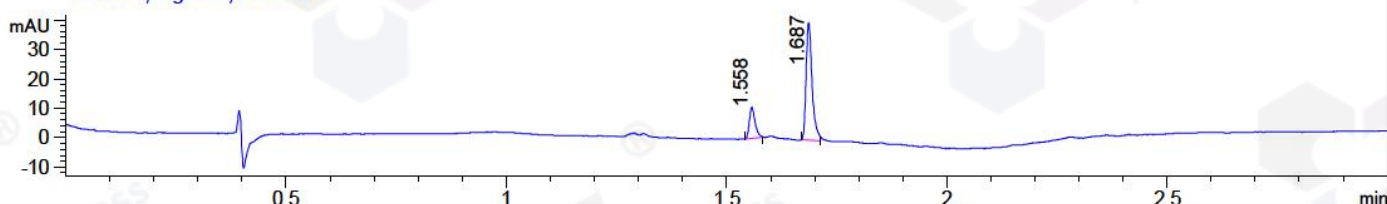
Column :SunFire C18, 4.6*50mm,3.5um A-RP-314

Oven Temperature : 45□

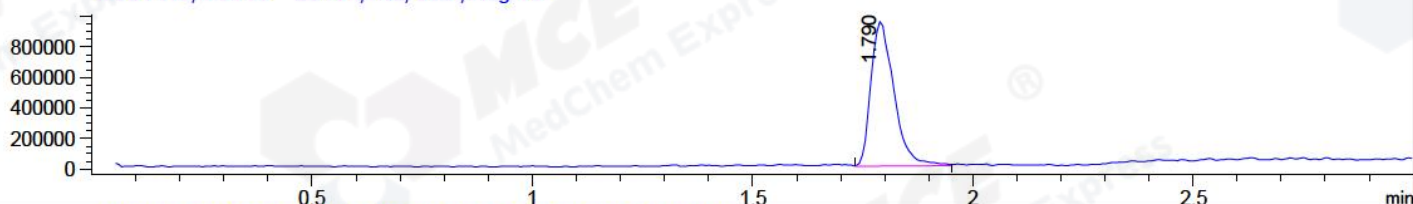
DAD1 B, Sig=214,4 Ref=off



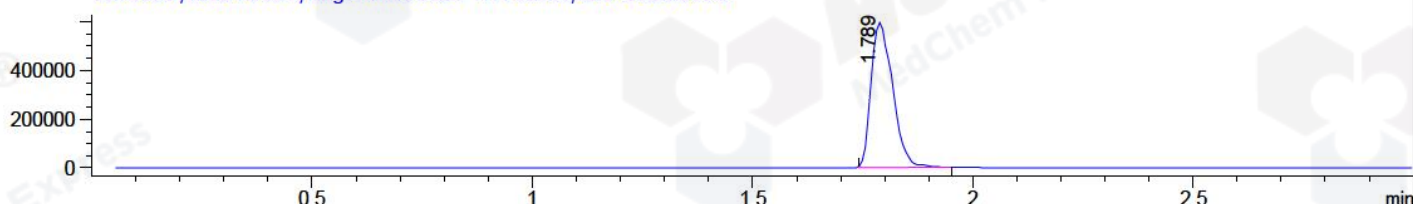
DAD1 C, Sig=254,4 Ref=off



MSD1 TIC, MS File ES-API, Pos, Scan, Frag: 70



Ion 363.1, MSD1 363.1, Target Mass 362.1 +H Positive, EIC=362.8:363.8



Integration Results for DAD1 B, Sig=214,4 Ref=off

RetTim	Width	Area	Height	Area%	MS (+)
0.57	0.02	5.82	5.31	0.40	296
1.56	0.02	14.53	14.06	0.99	296
1.69	0.02	1447.07	1425.07	98.61	296

Integration Results for DAD1 C, Sig=254,4 Ref=off

RetTim	Width	Area	Height	Area%	MS (+)
1.56	0.01	9.73	10.58	20.52	296
1.69	0.01	37.70	40.02	79.48	296

Integration Results for MSD1 TIC, MS File

RetTim	Width	Area	Height	Area%	MS (+)
1.79	0.05	3434984.00	949282.56	100.00	363

Ret. Time: 1.79

<<<< POSITIVE SPECTRA >>>>

