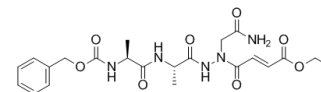


## RR-11a analog

Cat. No.:	HY-112205A		
CAS No.:	685543-66-2		
Molecular Formula:	C <sub>22</sub> H <sub>29</sub> N <sub>5</sub> O <sub>8</sub>		
Molecular Weight:	491.49		
Target:	Others		
Pathway:	Others		
Storage:	Powder	-20°C	3 years
		4°C	2 years
	In solvent	-80°C	6 months
		-20°C	1 month



### Solvent & Solubility

In Vitro	DMSO : 125 mg/mL (254.33 mM; Need ultrasonic)					
	Preparing Stock Solutions	Solvent Concentration	Mass	1 mg	5 mg	10 mg
		1 mM		2.0346 mL	10.1731 mL	20.3463 mL
		5 mM		0.4069 mL	2.0346 mL	4.0693 mL
		10 mM		0.2035 mL	1.0173 mL	2.0346 mL
Please refer to the solubility information to select the appropriate solvent.						
In Vivo	1. Add each solvent one by one: <b>10% DMSO &gt;&gt; 90% (20% SBE-β-CD in saline)</b> Solubility: ≥ 2.08 mg/mL (4.23 mM); Clear solution					
	2. Add each solvent one by one: <b>10% DMSO &gt;&gt; 90% corn oil</b> Solubility: ≥ 2.08 mg/mL (4.23 mM); Clear solution					
	3. Add each solvent one by one: <b>10% DMSO &gt;&gt; 40% PEG300 &gt;&gt; 5% Tween-80 &gt;&gt; 45% saline</b> Solubility: ≥ 2.08 mg/mL (4.23 mM); Clear solution					

### BIOLOGICAL ACTIVITY

Description	RR-11a analog is a potent and selective inhibitors of asparaginyl endopeptidases (AE) (Legumain), with IC <sub>50</sub> values of 4.5 nM, 4.5 nM and 31 nM for AE1 in Trichomonas Vaginalis, AE in Ixodes ricinus and AE in Schistosoma mansoni, respectively <sup>[1]</sup> .
IC <sub>50</sub> & Target	IC <sub>50</sub> : 4.5 nM (AE1 in Trichomonas Vaginalis), 4.5 nM (AE in Ixodes ricinus), 31 nM (AE in Schistosoma mansoni) <sup>[1]</sup> .

---

## REFERENCES

---

[1]. Götz MG, et al. Aza-peptidyl Michael acceptors. A new class of potent and selective inhibitors of asparaginyl endopeptidases (legumains) from evolutionarily diverse pathogens. J Med Chem. 2008 May 8;51(9):2816-32.

---

**Caution: Product has not been fully validated for medical applications. For research use only.**

Tel: 609-228-6898

Fax: 609-228-5909

E-mail: [tech@MedChemExpress.com](mailto:tech@MedChemExpress.com)

Address: 1 Deer Park Dr, Suite Q, Monmouth Junction, NJ 08852, USA