

File ..1\DATA\2019\20190318\556\BIZ2019-315-CXL6.D Tgt Mass (CHM):

Injection Date : 18 Mar 19 11:54 am +0800 Seq. Line : 27

Sample Name : BIZ2019-315-CXL6 Location : P2-D-05

Acq. Operator : LQ\_1052 Inj : 1

Spec. Reported : MS Integration Inj Volume : 1 ul

Acq. Method : D:\Chem32\1\data\2019\20190318\556\1-POS-3MIN-1.M

Analysis Method : D:\CHEM32\1\DATA\2019\20190318\556\1-POS-3MIN-1.M

Catalog No : HY-112205A Batch# 39036-20190315

Method Info : Mobile Phase: A: water(0.01%TFA) B:ACN(0.01%TFA)

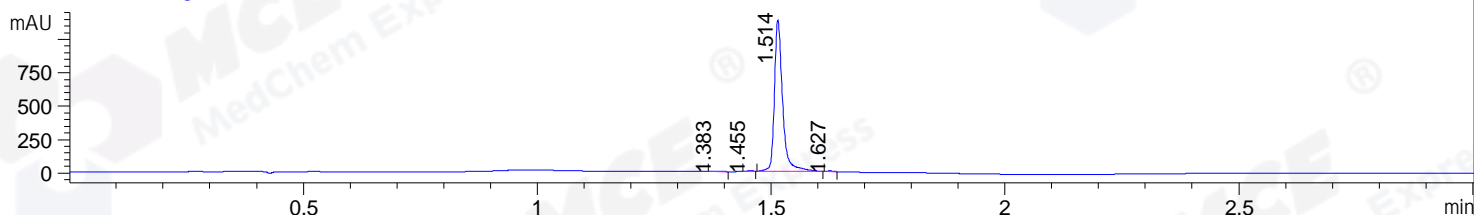
Gradient: 5% to 95%B within 1.3 min

Flow Rate :1.8ml/min

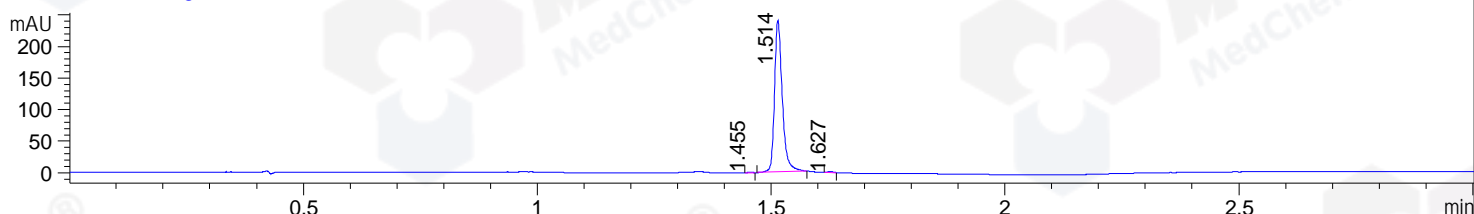
Column :SunFire C18, 4.6\*50mm,3.5um A-RP-314

Oven Temperature : 45

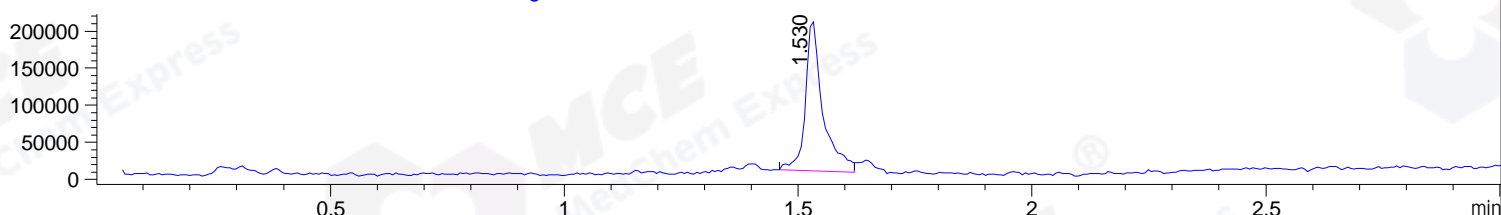
DAD1 B, Sig=214,4 Ref=off



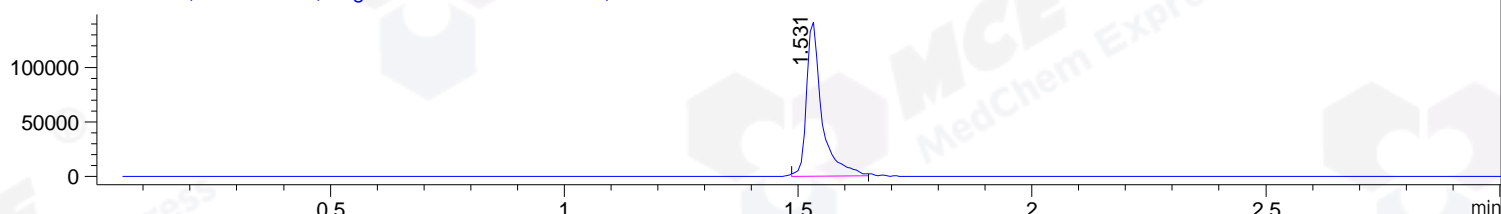
DAD1 C, Sig=254,4 Ref=off



MSD1 TIC, MS File ES-API, Pos, Scan, Frag: 70



Ion 492.2, MSD1 492.2, Target Mass 491.2 +H Positive, EIC=491.9:492.9



Integration Results for DAD1 B, Sig=214,4 Ref=off

RetTim	Width	Area	Height	Area%	MS (+)
1.38	0.02	4.25	4.11	0.31	294
1.46	0.01	2.93	3.92	0.21	175
1.51	0.02	1377.06	1132.34	99.16	492
1.63	0.02	4.47	4.85	0.32	492

Integration Results for DAD1 C, Sig=254,4 Ref=off

RetTim	Width	Area	Height	Area%	MS (+)
1.46	0.01	0.55	0.77	0.20	478
1.51	0.02	278.79	240.40	99.36	492
1.63	0.01	1.25	1.49	0.45	492

Integration Results for MSD1 TIC, MS File

RetTim	Width	Area	Height	Area%	MS (+)
1.53	0.04	524372.50	204286.91	100.00	492

Ret. Time: 1.53

<<<< POSITIVE SPECTRA >>>>

ES-API Positive

