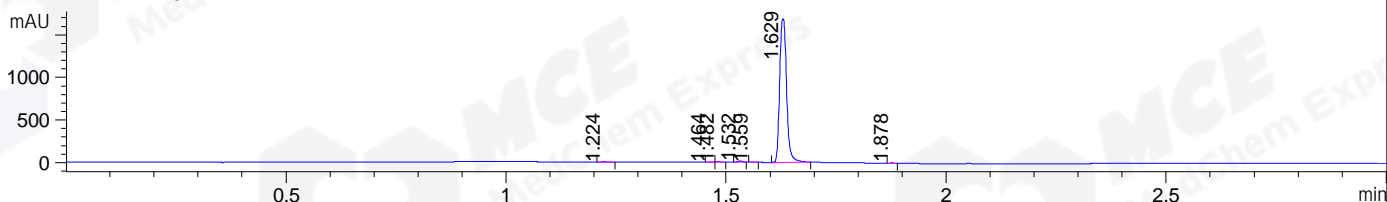
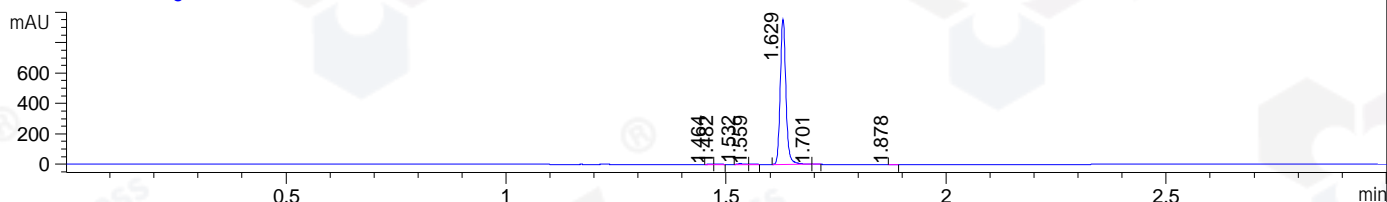


File ..DATA\2021\20210312\1303\CPK2021-312-31620.D Tgt Mass (CHM):
 Injection Date : 12 Mar 21 8:43 pm +0800 Seq. Line : 109
 Sample Name : CPK2021-312-31620 Location : P1-D-03
 Acq. Operator : yrz_1364 Inj : 1
 Spec. Reported : MS Integration Inj Volume : 1 ul
 Acq. Method : D:\Chem32\1\data\2021\20210312\1303\1-POS-3MIN.M
 Analysis Method : D:\CHEM32\1\DATA\2021\20210312\1303\1-POS-3MIN.M
 CAS NO. : 2095393-15-8
 Method Info : Mobile Phase: A: water(0.01%TFA) B:ACN(0.01%TFA)
 Gradient: 5% to 95%B within 1.3 min
 Flow Rate :1.8ml/min
 Column :SunFire C18, 4.6*50mm,3.5um A-RP-698

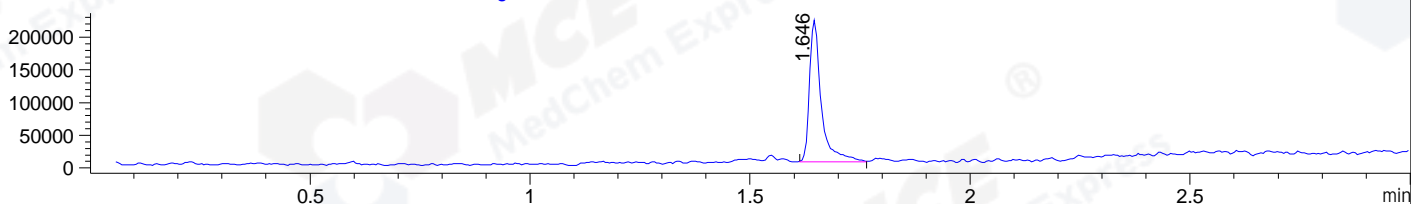
DAD1 B, Sig=214,4 Ref=off



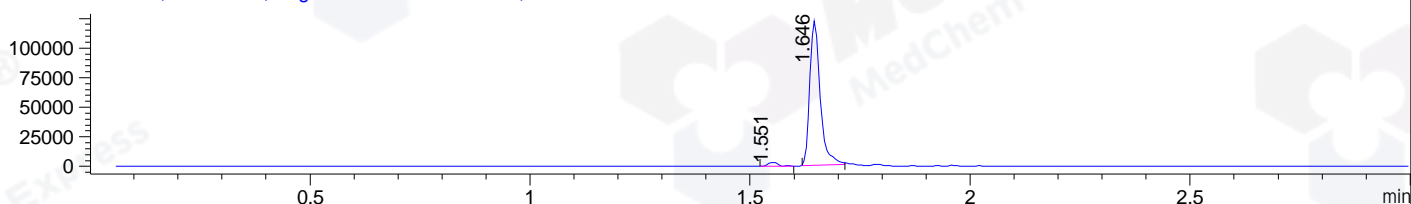
DAD1 C, Sig=254,4 Ref=off



MSD1 TIC, MS File ES-API, Pos, Scan, Frag: 70



Ion 479, MSD1 479, Target Mass 478 +H Positive, EIC=478.7:479.7



Integration Results for DAD1 B, Sig=214,4 Ref=off

RetTim	Width	Area	Height	Area%	MS (+)
1.22	0.01	4.34	4.44	0.23	ND
1.46	0.01	3.11	3.94	0.17	ND
1.48	0.01	4.90	6.49	0.26	365
1.53	0.01	10.63	13.97	0.57	479
1.56	0.01	1.82	2.66	0.10	479
1.63	0.02	1825.40	1690.15	98.52	479
1.88	0.01	2.55	3.56	0.14	ND

Integration Results for DAD1 C, Sig=254,4 Ref=off

RetTim	Width	Area	Height	Area%	MS (+)
1.46	0.01	1.38	1.94	0.16	ND
1.48	0.01	2.49	3.09	0.29	365
1.53	0.01	4.88	5.58	0.56	479
1.56	0.01	1.40	1.68	0.16	479
1.63	0.01	850.91	957.65	98.58	479
1.70	0.01	1.18	1.52	0.14	479
1.88	0.01	0.88	1.15	0.10	ND

Integration Results for MSD1 TIC, MS File

RetTim	Width	Area	Height	Area%	MS(+)
1.65	0.03	406957.69	217058.19	100.00	479

Ret. Time: 1.65

<<<< POSITIVE SPECTRA >>>>

ES-API Positive

