

## GW2974

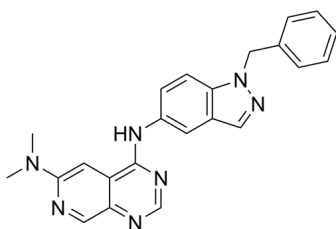
---

Cat. No.: HY-112293  
Batch No.: 382421  
CAS No.: 202272-68-2  
Molecular Formula: C<sub>23</sub>H<sub>21</sub>N<sub>7</sub>

### ANALYTICAL DATA

Theoretical: C(69.85%), H(5.35%), N(24.79%)  
Result: C(69.86%), H(5.32%), N(24.73%)

Chemical Structure:



**Caution: Product has not been fully validated for medical applications. For research use only.**

Tel: 609-228-6898

Fax: 609-228-5909

E-mail: [tech@MedChemExpress.com](mailto:tech@MedChemExpress.com)

Address: 1 Deer Park Dr, Suite Q, Monmouth Junction, NJ 08852, USA