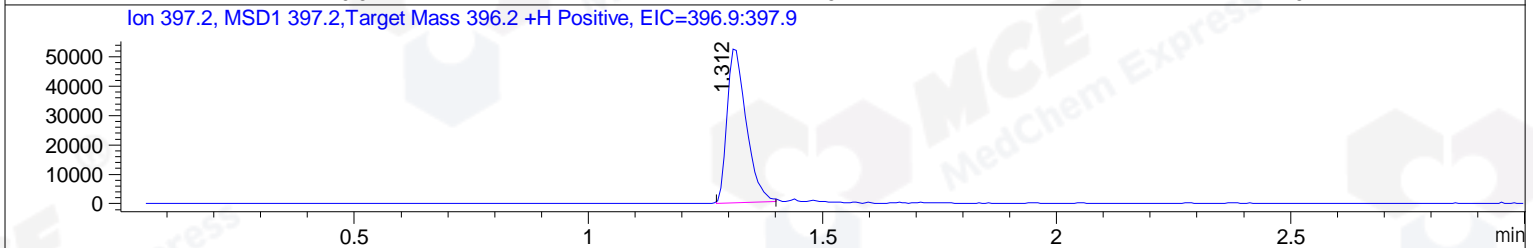
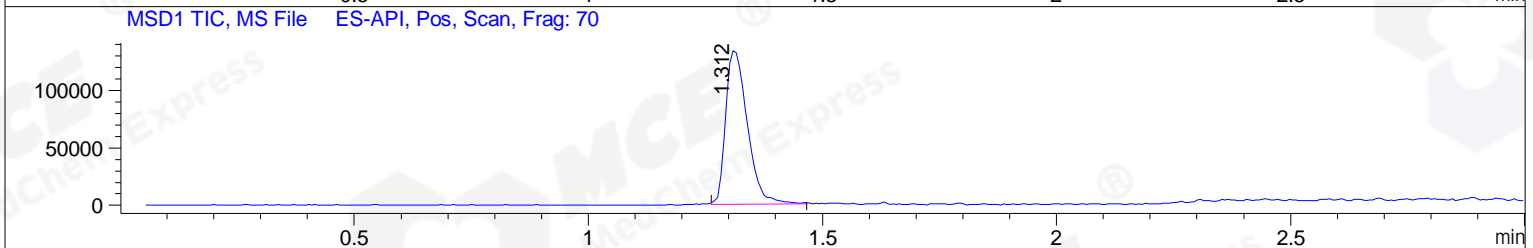
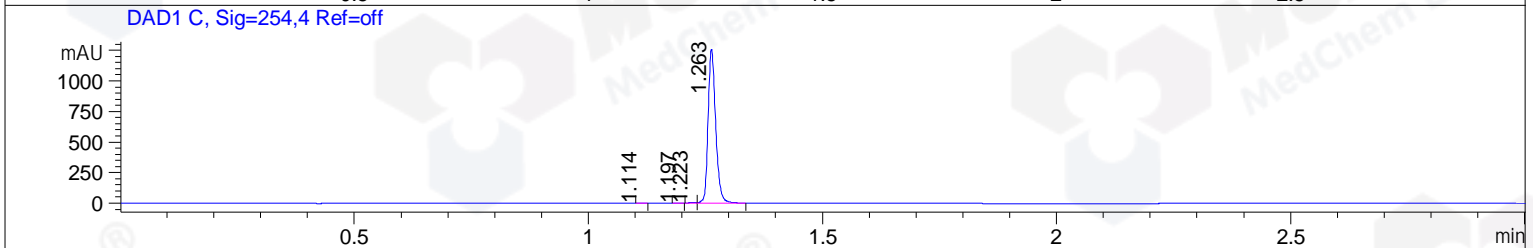
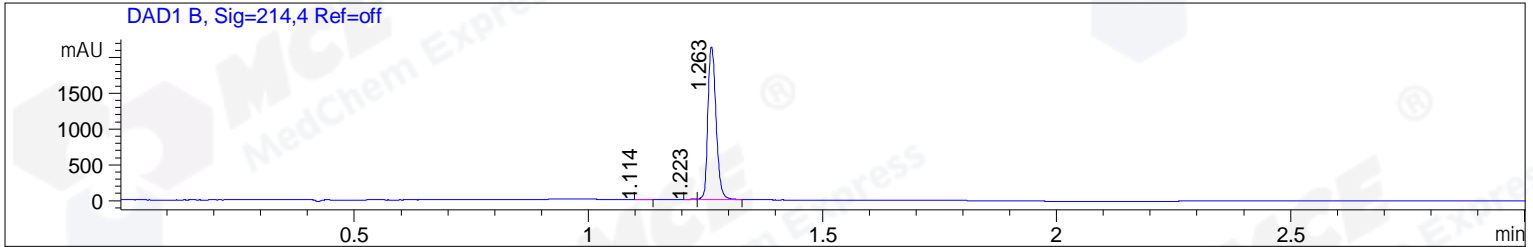


File ..1\DATA\2019\20190111\550\BIZ2019-111-CXL3.D Tgt Mass (CHM):  
 Injection Date : 11 Jan 19 5:34 pm +0800 Seq. Line : 6  
 Sample Name : BIZ2019-111-CXL3 Location : P1-B-05  
 Acq. Operator : LQ\_1052 Inj : 1  
 Spec. Reported : MS Integration Inj Volume : 1 ul  
 Acq. Method : D:\Chem32\1\data\2019\20190111\550\1-POS-3MIN-1.M  
 Analysis Method : D:\CHEM32\1\DATA\2019\20190111\550\1-POS-3MIN-1.M  
 Catalog No : HY-112299 Batch#36709  
 Method Info : Mobile Phase: A: water(0.01%TFA) B:ACN(0.01%TFA)  
 Gradient: 5% to 95%B within 1.3 min  
 Flow Rate :1.8ml/min  
 Column :SunFire C18, 4.6\*50mm,3.5um A-RP-314  
 Oven Temperature : 45



Integration Results for DAD1 B, Sig=214,4 Ref=off

RetTim	Width	Area	Height	Area%	MS (+)
1.11	0.01	3.41	3.82	0.13	ND
1.22	0.01	8.40	9.02	0.32	ND
1.26	0.02	2618.85	2134.62	99.55	199

Integration Results for DAD1 C, Sig=254,4 Ref=off

RetTim	Width	Area	Height	Area%	MS (+)
1.11	0.01	1.27	1.48	0.09	ND
1.20	0.02	0.65	0.59	0.05	ND
1.22	0.02	6.26	6.44	0.44	ND
1.26	0.02	1420.49	1261.46	99.43	199

Integration Results for MSD1 TIC, MS File

RetTim	Width	Area	Height	Area%	MS (+)
1.31	0.05	429667.94	134371.80	100.00	199

Ret. Time: 1.31

<<<< POSITIVE SPECTRA >>>>

ES-API Positive

