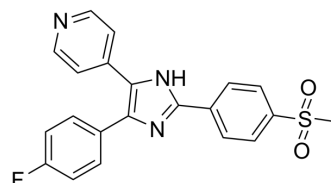


SB 203580 sulfone

Cat. No.:	HY-112349
CAS No.:	152121-46-5
Molecular Formula:	C ₂₁ H ₁₆ FN ₃ O ₂ S
Molecular Weight:	393.43
Target:	p38 MAPK
Pathway:	MAPK/ERK Pathway
Storage:	Please store the product under the recommended conditions in the Certificate of Analysis.



BIOLOGICAL ACTIVITY

Description

SB 203580 sulfone is an analog of p38 MAP kinase inhibitor SB 203580, which inhibits the IL-1 production in monocytes with an IC₅₀ of 0.2 μM and binds competitively with CSAID binding proteins (CSBP), inhibits it mediated stress response signaling with an IC₅₀ of 0.03 μM^[1].

REFERENCES

[1]. Gallagher TF, et al., Regulation of stress-induced cytokine production by pyridinylimidazoles; inhibition of CSBP kinase. *Bioorg Med Chem.* 1997 Jan;5(1):49-64.

Caution: Product has not been fully validated for medical applications. For research use only.

Tel: 609-228-6898

Fax: 609-228-5909

E-mail: tech@MedChemExpress.com

Address: 1 Deer Park Dr, Suite Q, Monmouth Junction, NJ 08852, USA