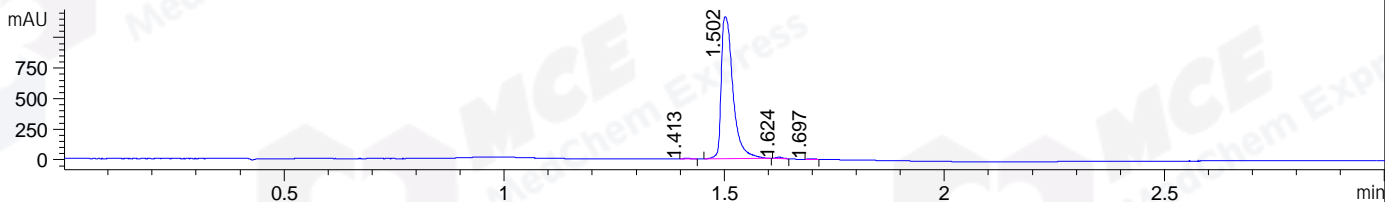
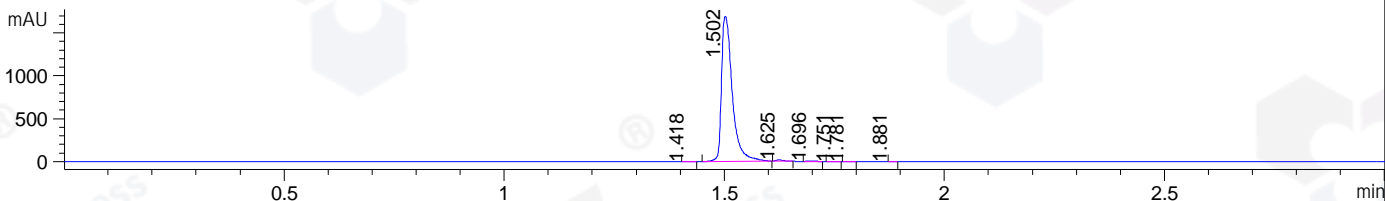


File ..\DATA\2019\20190227\543\BIZ2019-226-CXL26.D Tgt Mass (CHM):
 Injection Date : 27 Feb 19 12:03 pm +0800 Seq. Line : 30
 Sample Name : BIZ2019-226-CXL26 Location : P1-B-04
 Acq. Operator : LQ_1052 Inj : 1
 Spec. Reported : MS Integration Inj Volume : 1 ul
 Acq. Method : D:\Chem32\1\data\2019\20190227\543\1-POS-3MIN-1.M
 Analysis Method : D:\CHEM32\1\DATA\2019\20190227\543\1-POS-3MIN-1.M
 Catalog No : HY-112433 Batch#38408
 Method Info : Mobile Phase: A: water(0.01%TFA) B:ACN(0.01%TFA)
 Gradient: 5% to 95%B within 1.3 min
 Flow Rate :1.8ml/min
 Column :SunFire C18, 4.6*50mm,3.5um A-RP-314
 Oven Temperature : 45□

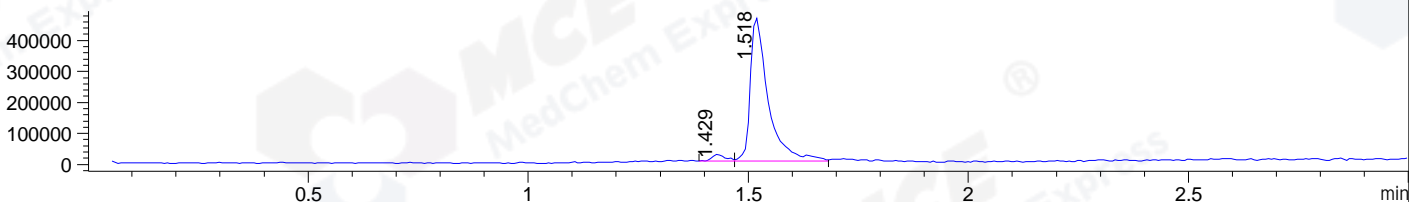
DAD1 B, Sig=214,4 Ref=off



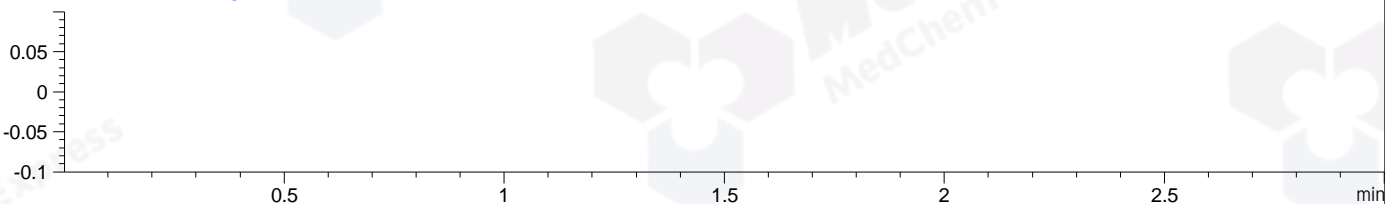
DAD1 C, Sig=254,4 Ref=off



MSD1 TIC, MS File ES-API, Pos, Scan, Frag: 70



Ion 1, MSD1 1, Target Mass 0 +H Positive, EIC=0.7:1.7



Integration Results for DAD1 B, Sig=214,4 Ref=off

RetTim	Width	Area	Height	Area%	MS (+)
1.41	0.02	4.23	3.45	0.19	339
1.50	0.03	2151.47	1163.95	99.01	366
1.62	0.02	11.91	11.71	0.55	366
1.70	0.02	5.28	4.96	0.24	493

Integration Results for DAD1 C, Sig=254,4 Ref=off

RetTim	Width	Area	Height	Area%	MS (+)
1.42	0.02	0.55	0.48	0.02	339
1.50	0.03	2863.58	1691.47	99.06	366
1.62	0.02	15.07	13.46	0.52	366
1.70	0.02	8.61	6.88	0.30	130
1.75	0.02	1.61	1.20	0.06	130
1.78	0.02	1.16	1.10	0.04	130
1.88	0.01	0.19	0.23	0.01	ND

Integration Results for MSD1 TIC, MS File

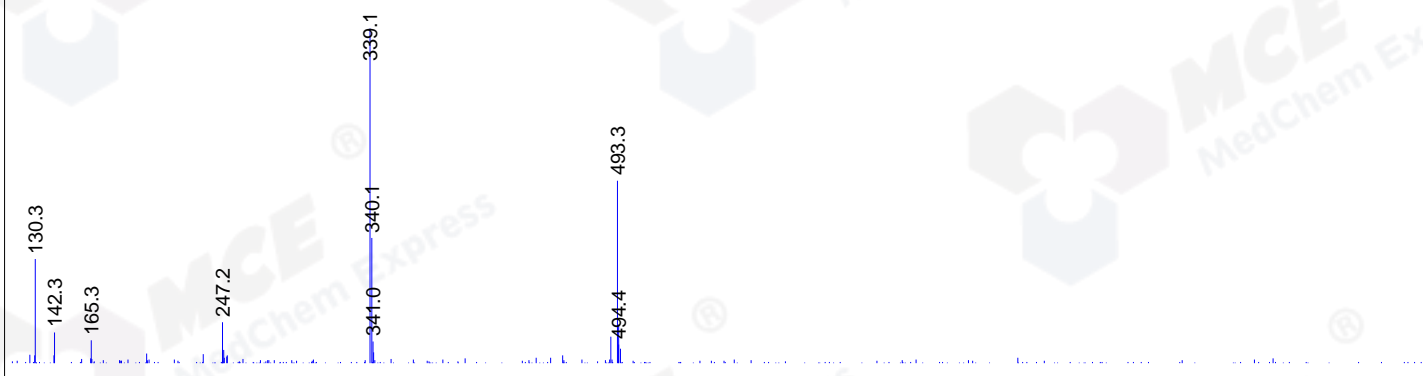
1.43	0.03	42610.07	20781.10	3.15	339
1.52	0.04	1311327.75	462821.72	96.85	366

RetTim	Width	Area	Height	Area%	MS (+)
--------	-------	------	--------	-------	--------

Ret. Time: 1.43

<<<< POSITIVE SPECTRA >>>>

ES-API Positive



Ret. Time: 1.52

ES-API Positive

