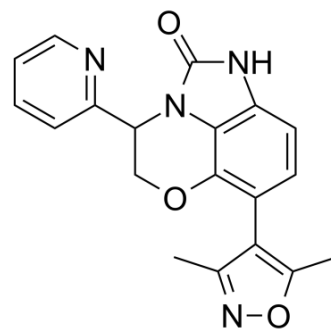


INCB054329 Racemate

Cat. No.:	HY-112504A		
CAS No.:	1628607-62-4		
Molecular Formula:	C ₁₉ H ₁₆ N ₄ O ₃		
Molecular Weight:	348.36		
Target:	Epigenetic Reader Domain		
Pathway:	Epigenetics		
Storage:	Powder	-20°C	3 years
		4°C	2 years
	In solvent	-80°C	6 months
		-20°C	1 month



SOLVENT & SOLUBILITY

In Vitro

DMSO : ≥ 62.5 mg/mL (179.41 mM)
 * "≥" means soluble, but saturation unknown.

Preparing Stock Solutions	Solvent Concentration	Mass		
		1 mg	5 mg	10 mg
	1 mM	2.8706 mL	14.3530 mL	28.7059 mL
	5 mM	0.5741 mL	2.8706 mL	5.7412 mL
	10 mM	0.2871 mL	1.4353 mL	2.8706 mL

Please refer to the solubility information to select the appropriate solvent.

In Vivo

- Add each solvent one by one: 10% DMSO >> 40% PEG300 >> 5% Tween-80 >> 45% saline
Solubility: ≥ 2.08 mg/mL (5.97 mM); Clear solution
- Add each solvent one by one: 10% DMSO >> 90% (20% SBE-β-CD in saline)
Solubility: ≥ 2.08 mg/mL (5.97 mM); Clear solution
- Add each solvent one by one: 10% DMSO >> 90% corn oil
Solubility: ≥ 2.08 mg/mL (5.97 mM); Clear solution

BIOLOGICAL ACTIVITY

Description

INCB054329 Racemate is a BET protein inhibitor.

IC₅₀ & Target

BET^[1].

REFERENCES

Caution: Product has not been fully validated for medical applications. For research use only.

Tel: 609-228-6898

Fax: 609-228-5909

E-mail: tech@MedChemExpress.com

Address: 1 Deer Park Dr, Suite Q, Monmouth Junction, NJ 08852, USA