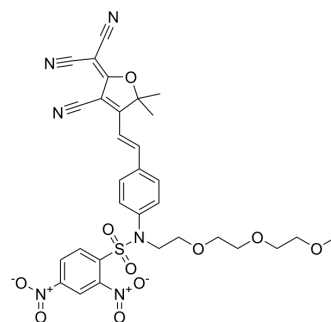


## Thiofluor 623

Cat. No.:	HY-112526
CAS No.:	1004324-99-5
Molecular Formula:	C <sub>31</sub> H <sub>30</sub> N <sub>6</sub> O <sub>10</sub> S
Molecular Weight:	679
Target:	Fluorescent Dye
Pathway:	Others
Storage:	Please store the product under the recommended conditions in the Certificate of Analysis.



### BIOLOGICAL ACTIVITY

#### Description

Thiofluor 623 (Compound 3) is a fluorescent turn-on probe that can be used for the selective sensing and bioimaging of thiols. Thiofluor 623 displays excellent immunity to interference from nitrogen and oxygen nucleophiles. Thiofluor 623 is essentially nonfluorescent in the absence of thiols, which cleave the probe and release the red-emissive donor-acceptor fluorophore (Ex=563 nm, Em=623 nm)<sup>[1]</sup>.

### REFERENCES

[1]. Bouffard J, et al. A highly selective fluorescent probe for thiol bioimaging. *Org Lett.* 2008 Jan 3;10(1):37-40.

**Caution: Product has not been fully validated for medical applications. For research use only.**

Tel: 609-228-6898

Fax: 609-228-5909

E-mail: tech@MedChemExpress.com

Address: 1 Deer Park Dr, Suite Q, Monmouth Junction, NJ 08852, USA