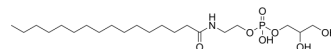


## Glycerophospho-N-palmitoyl ethanolamine

Cat. No.:	HY-112528
CAS No.:	100575-09-5
Molecular Formula:	C <sub>21</sub> H <sub>44</sub> NO <sub>7</sub> P
Molecular Weight:	453.55
Target:	Others
Pathway:	Others
Storage:	Please store the product under the recommended conditions in the Certificate of Analysis.



### BIOLOGICAL ACTIVITY

#### Description

Glycerophospho-N-palmitoyl ethanolamine (GP-NPEA) is a metabolic precursor of palmitoyl ethanolamide PEA (HY-157829). Glycerophospho-N-palmitoyl ethanolamine decreases in the cortex of CUMS rats, which may be related to a disorder in the endocannabinoid system arising after the onset of depression<sup>[1]</sup>.

### REFERENCES

[1]. Duan L, et al., Metabolomics Analysis of the Prefrontal Cortex in a Rat Chronic Unpredictable Mild Stress Model of Depression. *Front Psychiatry*. 2022 Mar 15;13:815211.

**Caution: Product has not been fully validated for medical applications. For research use only.**

Tel: 609-228-6898

Fax: 609-228-5909

E-mail: [tech@MedChemExpress.com](mailto:tech@MedChemExpress.com)

Address: 1 Deer Park Dr, Suite Q, Monmouth Junction, NJ 08852, USA