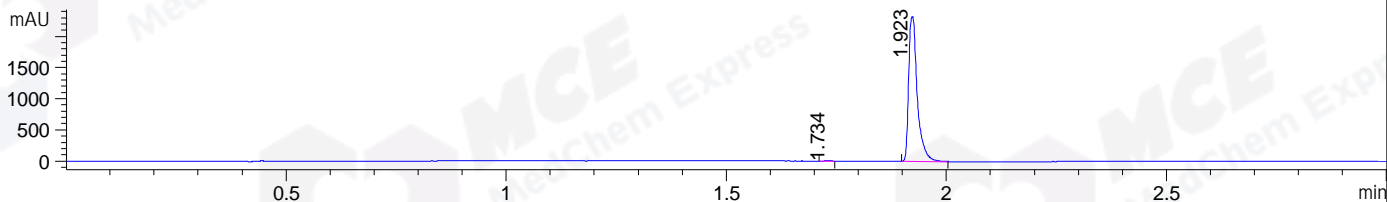
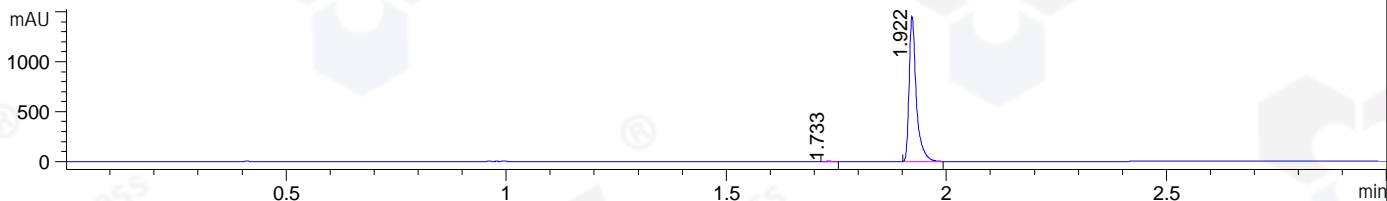


File ..DATA\2019\20190606\579 1\BIZ2019-605-CXL9.D Tgt Mass (CHM):  
 Injection Date : 6 Jun 19 11:10 am +0800 Seq. Line : 27  
 Sample Name : BIZ2019-605-CXL9 Location : P2-A-04  
 Acq. Operator : ZJ\_1432 Inj : 1  
 Spec. Reported : MS Integration Inj Volume : 1 ul  
 Acq. Method : D:\Chem32\1\data\2019\20190604\579 1\1-POS-3MIN.M  
 Analysis Method : D:\CHEM32\1\DATA\2019\20190606\579 1\1-POS-3MIN.M  
 Catalog No : HY-112607 Batch# 41911  
 Method Info : Mobile Phase: A: water(0.01%TFA) B:ACN(0.01%TFA)  
 Gradient: 5% to 95%B within 1.3 min  
 Flow Rate :1.8ml/min  
 Column :SunFire C18, 4.6\*50mm,3.5um A-RP-433  
 Oven Temperature : 45

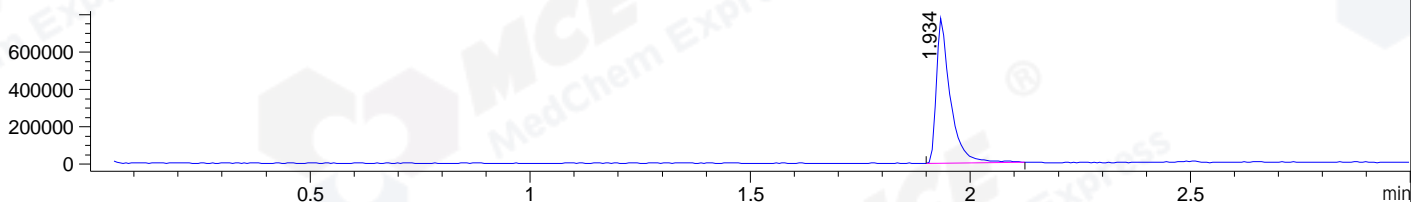
DAD1 B, Sig=214,4 Ref=off



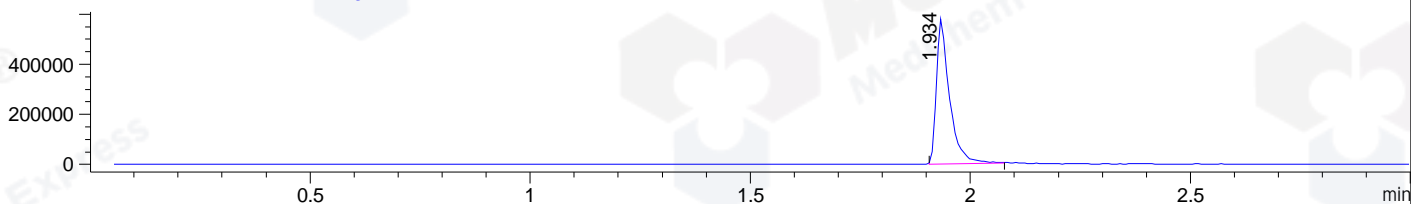
DAD1 C, Sig=254,4 Ref=off



MSD1 TIC, MS File ES-API, Pos, Scan, Frag: 70



Ion 369.17, MSD1 369.17, Target Mass 368.17 +H Positive, EIC=368.87:369.87



## Integration Results for DAD1 B, Sig=214,4 Ref=off

RetTim	Width	Area	Height	Area%	MS (+)
1.73	0.02	2.81	2.56	0.09	ND
1.92	0.02	3167.57	2327.32	99.91	369

## Integration Results for DAD1 C, Sig=254,4 Ref=off

RetTim	Width	Area	Height	Area%	MS (+)
1.73	0.02	3.61	2.95	0.22	ND
1.92	0.02	1660.00	1457.48	99.78	369

## Integration Results for MSD1 TIC, MS File

RetTim	Width	Area	Height	Area%	MS (+)
1.93	0.03	1735713.63	778168.00	100.00	369

Ret. Time: 1.93

<<<< POSITIVE SPECTRA >>>>

ES-API Positive

