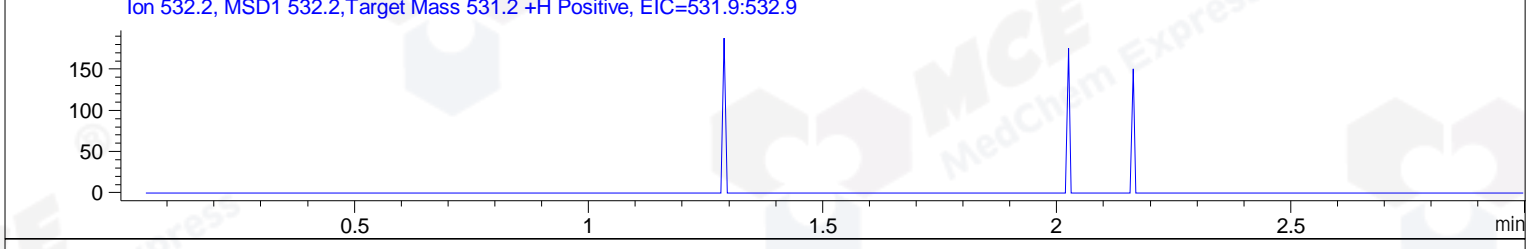
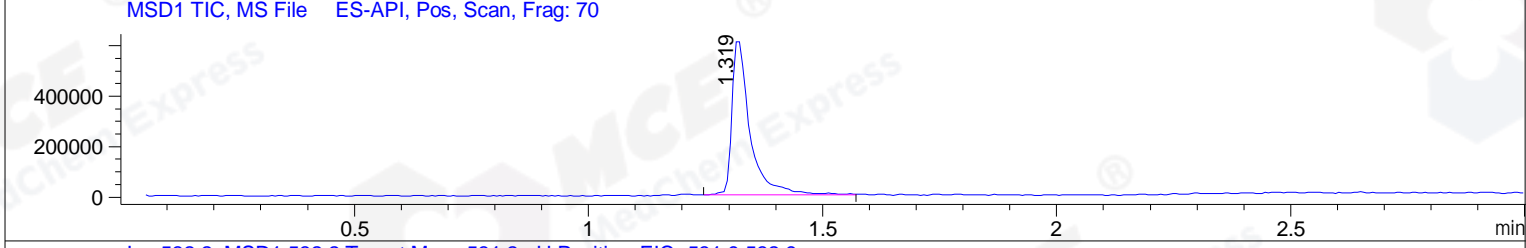
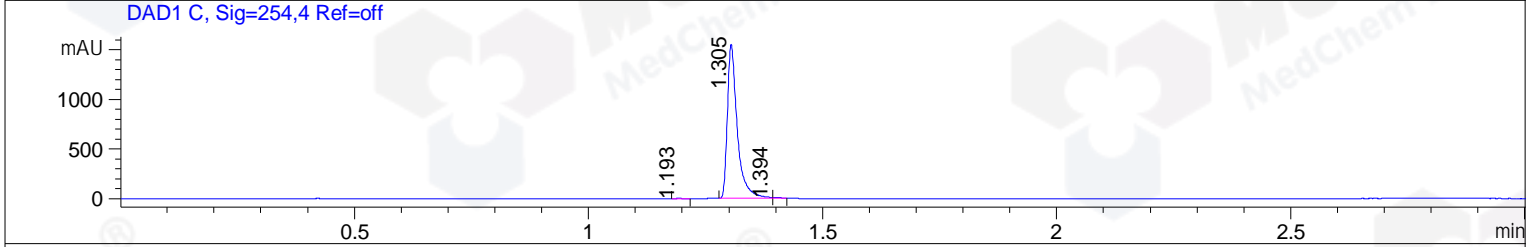
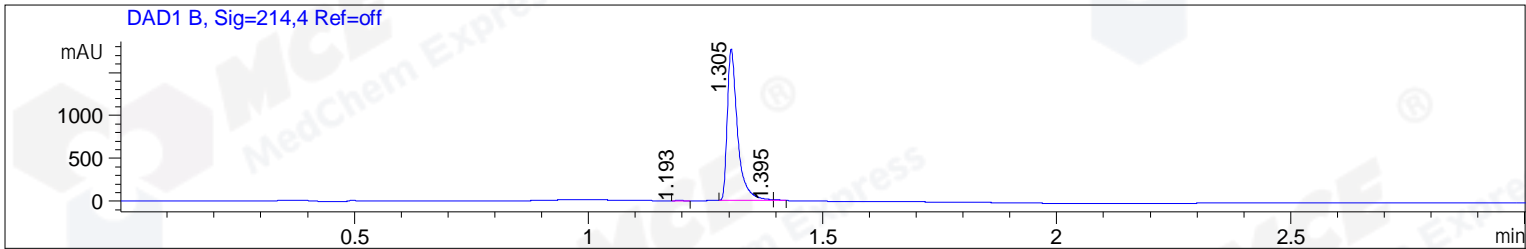


File ..1\DATA\2019\20190402\562\BIZ2019-401-CXL4.D Tgt Mass (CHM):
 Injection Date : 2 Apr 19 2:50 pm +0800 Seq. Line : 3
 Sample Name : BIZ2019-401-CXL4 Location : P2-E-05
 Acq. Operator : LQ_1052 Inj : 1
 Spec. Reported : MS Integration Inj Volume : 1 ul
 Acq. Method : D:\Chem32\1\data\2019\20190402\562\1-POS-3MIN-1.M
 Analysis Method : D:\CHEM32\1\DATA\2019\20190402\562\1-POS-3MIN-1.M
 Catalog No : HY-112612A Batch#39613
 Method Info : Mobile Phase: A: water(0.01%TFA) B:ACN(0.01%TFA)
 Gradient: 5% to 95%B within 1.3 min
 Flow Rate :1.8ml/min
 Column :SunFire C18, 4.6*50mm,3.5um A-RP-314
 Oven Temperature : 45



Integration Results for DAD1 B, Sig=214,4 Ref=off

RetTim	Width	Area	Height	Area%	MS (+)
1.19	0.02	3.24	2.44	0.12	142
1.30	0.03	2707.90	1769.10	99.52	460
1.39	0.02	9.94	9.91	0.37	460

Integration Results for DAD1 C, Sig=254,4 Ref=off

RetTim	Width	Area	Height	Area%	MS (+)
1.19	0.02	2.12	1.77	0.09	142
1.30	0.02	2282.83	1552.32	99.55	460
1.39	0.02	8.20	8.22	0.36	460

Integration Results for MSD1 TIC, MS File

RetTim	Width	Area	Height	Area%	MS (+)
1.32	0.04	1655989.88	628541.81	100.00	460

Ret. Time: 1.32

<<<< POSITIVE SPECTRA >>>>

ES-API Positive

