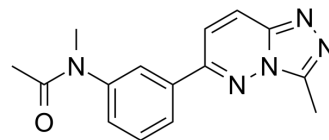


## Lin28-let-7 antagonist 1

Cat. No.:	HY-112659
CAS No.:	108825-65-6
Molecular Formula:	C <sub>15</sub> H <sub>15</sub> N <sub>5</sub> O
Molecular Weight:	281.31
Target:	Others
Pathway:	Others
Storage:	Please store the product under the recommended conditions in the Certificate of Analysis.



### BIOLOGICAL ACTIVITY

#### Description

Lin28-let-7 antagonist 1 (compound 1632) is a potent antagonist of Lin28/pre-let-7 interaction. Lin28-let-7 antagonist 1 inhibits Lin28A binding to pre-let-7a-2, with an IC<sub>50</sub> of 8 μM. Lin28-let-7 antagonist 1 inhibits proliferation in human cancer cells<sup>[1]</sup>.

### REFERENCES

[1]. Roos M, et al. A Small-Molecule Inhibitor of Lin28. ACS Chem Biol. 2016 Oct 21;11(10):2773-2781.

**Caution: Product has not been fully validated for medical applications. For research use only.**

Tel: 609-228-6898

Fax: 609-228-5909

E-mail: tech@MedChemExpress.com

Address: 1 Deer Park Dr, Suite Q, Monmouth Junction, NJ 08852, USA