

## N-alpha-Tosyl-L-lysine chloromethyl ketone hydrochloride

---

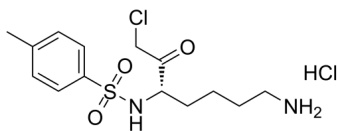
Cat. No.: HY-112716  
Batch No.: 329180  
CAS No.: 4272-74-6  
Molecular Formula: C<sub>14</sub>H<sub>22</sub>Cl<sub>2</sub>N<sub>2</sub>O<sub>3</sub>S

### ANALYTICAL DATA

Theoretical: C(45.53%), H(-), N(7.59%)

Result: C(45.1%), H(-), N(7.4%)

Chemical Structure:



**Caution: Product has not been fully validated for medical applications. For research use only.**

Tel: 609-228-6898

Fax: 609-228-5909

E-mail: [tech@MedChemExpress.com](mailto:tech@MedChemExpress.com)

Address: 1 Deer Park Dr, Suite Q, Monmouth Junction, NJ 08852, USA