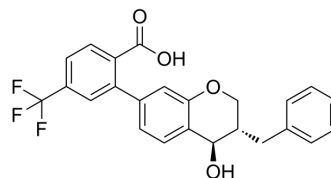


## CP-195543

<b>Cat. No.:</b>	HY-112742
<b>CAS No.:</b>	204981-48-6
<b>Molecular Formula:</b>	C <sub>24</sub> H <sub>19</sub> F <sub>3</sub> O <sub>4</sub>
<b>Molecular Weight:</b>	428.4
<b>Target:</b>	Leukotriene Receptor
<b>Pathway:</b>	GPCR/G Protein
<b>Storage:</b>	Please store the product under the recommended conditions in the Certificate of Analysis.



### BIOLOGICAL ACTIVITY

<b>Description</b>	CP-195543 is a potent, selective and orally active leukotriene B <sub>4</sub> (LTB <sub>4</sub> ) receptor antagonist with IC <sub>50</sub> s of 6.8, 37.0 nM for human neutrophils and murine spleen membranes, respectively. CP-195543 blocks CD11b up-regulation. CP-195543 inhibits LTB <sub>4</sub> -mediated neutrophil infiltration <sup>[1]</sup> .																	
<b>IC<sub>50</sub> &amp; Target</b>	LTB <sub>4</sub>																	
<b>In Vitro</b>	<p>CP-195543 inhibits human and mouse neutrophil chemotaxis mediated by LTB<sub>4</sub> with IC<sub>50</sub> values of 2.4 nM, 7.5 nM, respectively<sup>[1]</sup>.</p> <p>CP-195543 (0.1 nM-10 μM; 60 min) blocks CD11b up-regulation on human neutrophils (HN) and murine neutrophils with IC<sub>50</sub>s of 270, 420 nM for human monocytes and eosinophils, respectively<sup>[1]</sup>.</p> <p>MCE has not independently confirmed the accuracy of these methods. They are for reference only.</p>																	
<b>In Vivo</b>	<p>CP-195543 (0.01, 0.1, 1, 10 mg/kg for guinea pig; 0.01, 0.1, 1, 10, 100 mg/kg for mice; P.o.; 1 h before injection of LTB<sub>4</sub>) inhibits LTB<sub>4</sub>-mediated neutrophil infiltration in guinea pig skin in a dose-dependent manner<sup>[1]</sup>.</p> <p>MCE has not independently confirmed the accuracy of these methods. They are for reference only.</p> <table border="1" style="width: 100%; border-collapse: collapse;"> <tr> <td style="width: 30%;">Animal Model:</td> <td>Guinea pig (Injection of LTB<sub>4</sub> 10, 30, 100 ng/site; injected intradermally)<sup>[1]</sup></td> </tr> <tr> <td>Dosage:</td> <td>0.01, 0.1, 1, 10 mg/kg</td> </tr> <tr> <td>Administration:</td> <td>P.o.; 1 h before injection of LTB<sub>4</sub></td> </tr> <tr> <td>Result:</td> <td>Inhibited LTB<sub>4</sub>-mediated neutrophil infiltration in guinea pig skin in a dose-dependent manner.</td> </tr> </table> <table border="1" style="width: 100%; border-collapse: collapse;"> <tr> <td style="width: 30%;">Animal Model:</td> <td>Mice (Injection of LTB<sub>4</sub> 100 ng/site; injected intradermally)<sup>[1]</sup></td> </tr> <tr> <td>Dosage:</td> <td>0.01, 0.1, 1, 10, 100 mg/kg</td> </tr> <tr> <td>Administration:</td> <td>P.o.; 1 h before injection of LTB<sub>4</sub></td> </tr> <tr> <td>Result:</td> <td>Inhibited LTB<sub>4</sub>-mediated neutrophil infiltration in guinea pig skin in a dose-dependent manner.</td> </tr> </table>		Animal Model:	Guinea pig (Injection of LTB <sub>4</sub> 10, 30, 100 ng/site; injected intradermally) <sup>[1]</sup>	Dosage:	0.01, 0.1, 1, 10 mg/kg	Administration:	P.o.; 1 h before injection of LTB <sub>4</sub>	Result:	Inhibited LTB <sub>4</sub> -mediated neutrophil infiltration in guinea pig skin in a dose-dependent manner.	Animal Model:	Mice (Injection of LTB <sub>4</sub> 100 ng/site; injected intradermally) <sup>[1]</sup>	Dosage:	0.01, 0.1, 1, 10, 100 mg/kg	Administration:	P.o.; 1 h before injection of LTB <sub>4</sub>	Result:	Inhibited LTB <sub>4</sub> -mediated neutrophil infiltration in guinea pig skin in a dose-dependent manner.
Animal Model:	Guinea pig (Injection of LTB <sub>4</sub> 10, 30, 100 ng/site; injected intradermally) <sup>[1]</sup>																	
Dosage:	0.01, 0.1, 1, 10 mg/kg																	
Administration:	P.o.; 1 h before injection of LTB <sub>4</sub>																	
Result:	Inhibited LTB <sub>4</sub> -mediated neutrophil infiltration in guinea pig skin in a dose-dependent manner.																	
Animal Model:	Mice (Injection of LTB <sub>4</sub> 100 ng/site; injected intradermally) <sup>[1]</sup>																	
Dosage:	0.01, 0.1, 1, 10, 100 mg/kg																	
Administration:	P.o.; 1 h before injection of LTB <sub>4</sub>																	
Result:	Inhibited LTB <sub>4</sub> -mediated neutrophil infiltration in guinea pig skin in a dose-dependent manner.																	

---

## REFERENCES

[1]. Showell HJ, et al. The preclinical pharmacological profile of the potent and selective leukotriene B4 antagonist CP-195543. J Pharmacol Exp Ther. 1998 Jun;285(3):946-54.

---

**Caution: Product has not been fully validated for medical applications. For research use only.**

Tel: 609-228-6898

Fax: 609-228-5909

E-mail: [tech@MedChemExpress.com](mailto:tech@MedChemExpress.com)

Address: 1 Deer Park Dr, Suite Q, Monmouth Junction, NJ 08852, USA